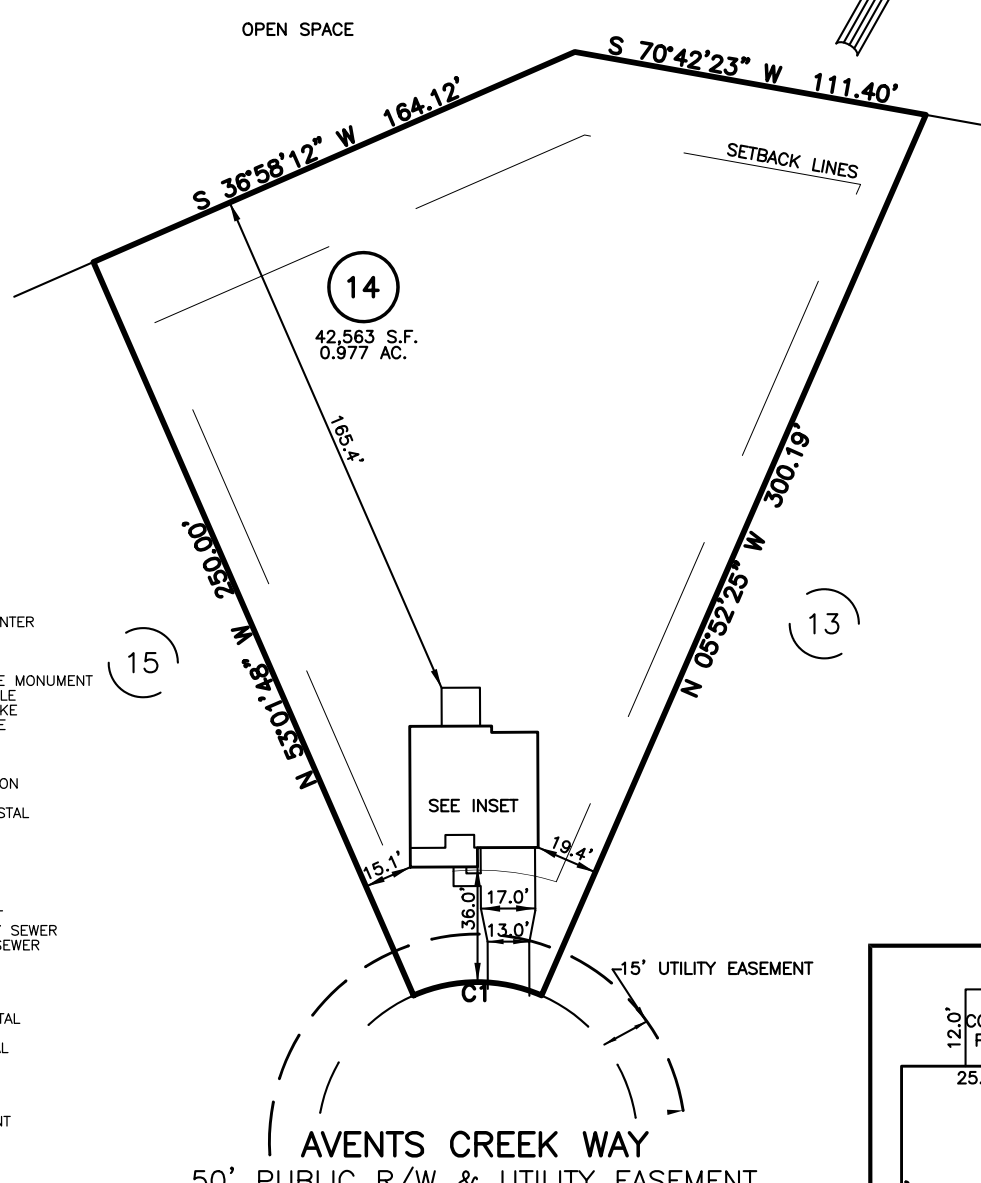
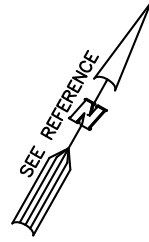


PLOT PLAN FOR
NEW HOME INC., LLC
 46 AVENTS CREEK WAY
 LOT 14, WOODBRIDGE SOUTH
 BUCKHORN TOWNSHIP, HARNETT COUNTY, NORTH CAROLINA



LEGEND

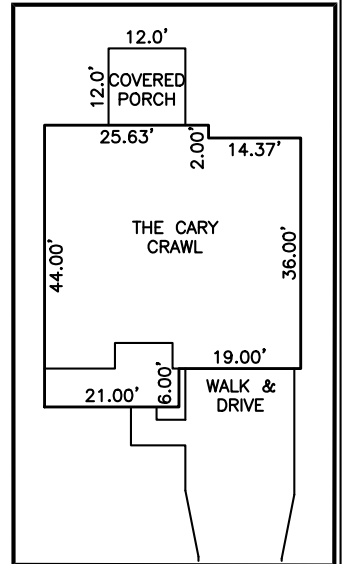
- △ AIR CONDITIONER
- BC BACK of CURB
- BFP BACK FLOW PREVENTER
- CLEANOUT
- CURB INLET
- DHS DRILL HOLE SET
- ECM EXISTING CONCRETE MONUMENT
- EDH EXISTING DRILL HOLE
- EIS EXISTING IRON STAKE
- EIP EXISTING IRON PIPE
- EM ELECTRIC METER
- EPK EXISTING PK NAIL
- ES ELECTRIC STUB
- ▽ FLARED END SECTION
- ⊕ FIRE HYDRANT
- FIBER OPTIC PEDESTAL
- ⊙ GAS METER
- GUY
- INV. INVERT
- IPS IRON PIPE SET
- IRS IRON ROD SET
- LIGHT POLE
- MNS MAGNETIC NAIL SET
- ⊗ MANHOLE SANITARY SEWER
- ⊗ MANHOLE STORM SEWER
- OHW OVERHEAD WIRES
- PKS PK NAIL SET
- PNS POINT NOT SET
- RRS RAIL ROAD SPIKE
- TELEPHONE PEDESTAL
- TRANSFORMER
- CABLE TV PEDESTAL
- UTILITY POLE
- WATER METER
- WATER VALVE
- YARD INLET
- () FIELD MEASUREMENT

(15)

(13)

AVENTS CREEK WAY
 50' PUBLIC R/W & UTILITY EASEMENT

NUM	RADIUS	ARC	DELTA	CHORD BRG	CHORD
C1	50.00'	41.15'	47°09'23"	S 60°32'54" W	40.00'

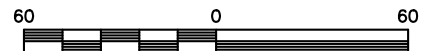


INSET: SCALE: 1"=30'

IMPERVIOUS SURFACES	
HOUSE	1,620 S.F.
WALK & DRIVE	710 S.F.
PORCH	150 S.F.
TOTAL	2,480 S.F.
MAX. IMPERVIOUS	4,000 S.F.

SETBACK INFO

- FRONT: _____ 35'
- REAR: _____ 25'
- SIDES: _____ 10'
- CORNER SIDE: _____ 20'



SCALE: 1" = 60'

REFERENCES:

P.B. 2023, PGS 92-94

NOTES

1. THIS SURVEY SUBJECT TO ANY FACTS THAT MAY BE DISCLOSED BY A FULL AND ACCURATE TITLE SEARCH.
2. THIS MAP MAY NOT BE A CERTIFIED SURVEY AND HAS NOT BEEN REVIEWED BY A LOCAL GOVERNMENT AGENCY FOR COMPLIANCE WITH ANY APPLICABLE LAND DEVELOPMENT REGULATIONS AND HAS NOT BEEN REVIEWED FOR COMPLIANCE WITH RECORDING REQUIREMENTS FOR PLATS.

PLOT PLAN
 PRELIMINARY PLAT- NOT FOR RECORDATION,
 CONVEYANCE OR SALES

DATE: AUG. 11, 2023

F.B. _____

REV CODE: 1.FLIP, 2.PLAN, 3.ROTATE, 4.MOVE, 5.SS
 6.SEVERAL OF ABOVE, 7.LAND FEATURE, 8. OTHER

RWK, PA
ENGINEERING ~ SURVEYING
 CORPORATE LICENSE: C-1771
 101 W. MAIN ST., SUITE 202
 GARNER, NC 27529
 PHONE (919) 779-4854
 FAX (919) 779-4056