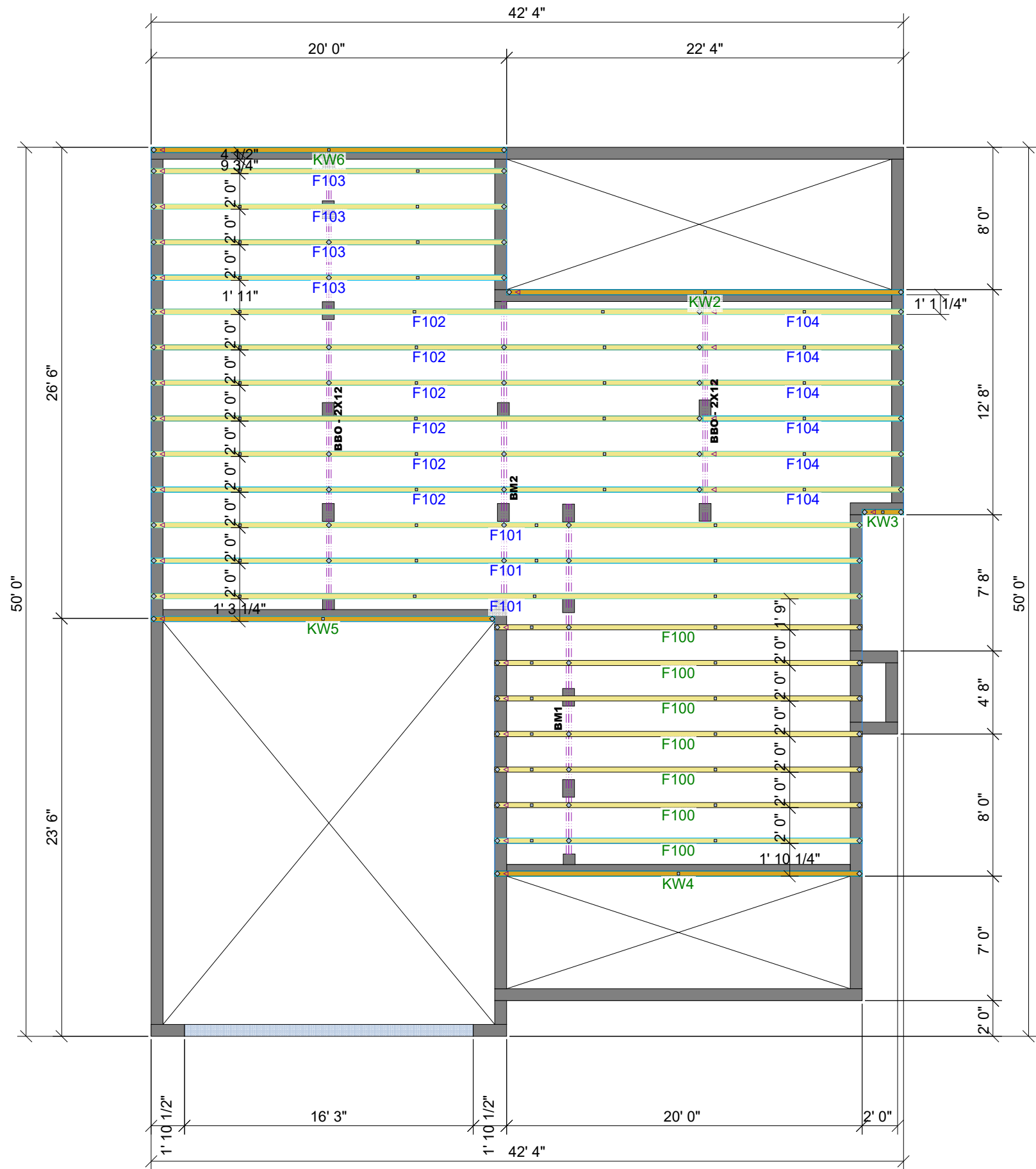


THIS IS A TRUSS/COMPONENT PLACEMENT DIAGRAM (TPD) ONLY: NOT AN ENGINEERED DOCUMENT. Trusses are designed as individual building components to be incorporated into the building design at the specification of the building designer. See individual truss design drawings (TDD's) for each truss design identified on the TPD. The building designer is responsible for temporary and permanent bracing of the roof and floor system and for the overall structure. The design of the support structure including but not limited to headers, beams, walls, and columns is also the responsibility of the building designer. For general guidance regarding installation and bracing, consult "Building Component Safety Information" (BCSI) available from the SBC Association (www.sbcassociation.com). It is the responsibility of the General Contractor to verify that the provided component layout matches the final intended construction plans, loading conditions, and use. If they do not, it is the responsibility of the General Contractor to notify UFP and provide plans containing the latest specifications and designs. UFP will not be responsible for plan changes by others after final approval of shop drawings, or for errors or modifications made on-site during construction. DO NOT CUT, NOTCH, DRILL, OR OTHERWISE "REPAIR" MANUFACTURED TRUSSES IN ANY WAY WITHOUT PRIOR WRITTEN AUTHORIZATION BY A LICENSED PROFESSIONAL DESIGNATED BY UFP. The Framing is responsible to verify all dimensions, including adjusting member spacing within tolerances to allow for the drop and rise of plumbing/HVAC, unless noted otherwise. Truss-to-wall connections, if shown, are for uplift only and do not consider lateral loads. All connectors on this project are to be installed per the connector manufacturer's specifications. All connectors shown that are not truss-to-truss are suggestions only and are to be verified by the Building Designer or Engineer of Record for suitability to this particular project. UFP accepts no responsibility for the specific application or suitability of any connector that is not truss-to-truss as they apply to this specific structure.

PLACEMENT PLAN



FLOOR TRUSS CRITERIA

BUILDING CODE	IRC2015
TOP CHORD LIVE LOAD	40.000 lb/ft ²
TOP CHORD DEAD LOAD	20.000 lb/ft ²
BOTTOM CHORD LIVE LOAD	0.000 lb/ft ²
BOTTOM CHORD DEAD LOAD	5.000 lb/ft ²
LIVE LOAD DEFLECTION	480
TOTAL LOAD DEFLECTION	360
△ INDICATES LEFT END OF TRUSS	

PlotID	Length	Product	Plies	Net Qty	Fab Type
BM1	20' 0"	1 3/4" x 11 7/8" 2.0E Microllam® LVL	2	2	MFD
BM2	18' 0"	1 3/4" x 11 7/8" 2.0E Microllam® LVL	2	2	MFD

SCALE: N.T.S.

REVISIONS	DATE	DESCRIPTION	DSN

DESIGNER ETG
 LAYOUT DATE 8/24/2023
 ARCH DATE -
 STRUC DATE -

JOB #: 23081661F1

PARKS BLDG SUPPLY

32 DAUPHINE ST CRAWL

32 DAUPHINE ST
 FUQUAY VARINA, NC

This drawing is property of UFP Site Built, LLC. Any unauthorized use of this document without written permission is prohibited. UFP relinquishes ownership of delivered product upon delivery. Owner of product must obtain UFP's authorization prior to any alteration or modification of product. UFP will not be held responsible for any unauthorized modifications done or costs incurred without prior written authorization from UFP.



TRUSS TRAX
 UFP CONSTRUCTION

UFP SITE BUILT
 A UFP INDUSTRIES COMPANY

Burlington, NC
 Chesapeake, VA
 Clinton, NC
 Conway, SC
 Jefferson, GA

Locust, NC
 Liberty, NC
 Ooltewah, TN
 Pearisburg, VA
 Stanfield, NC

Customer Service (800) 476-9356

