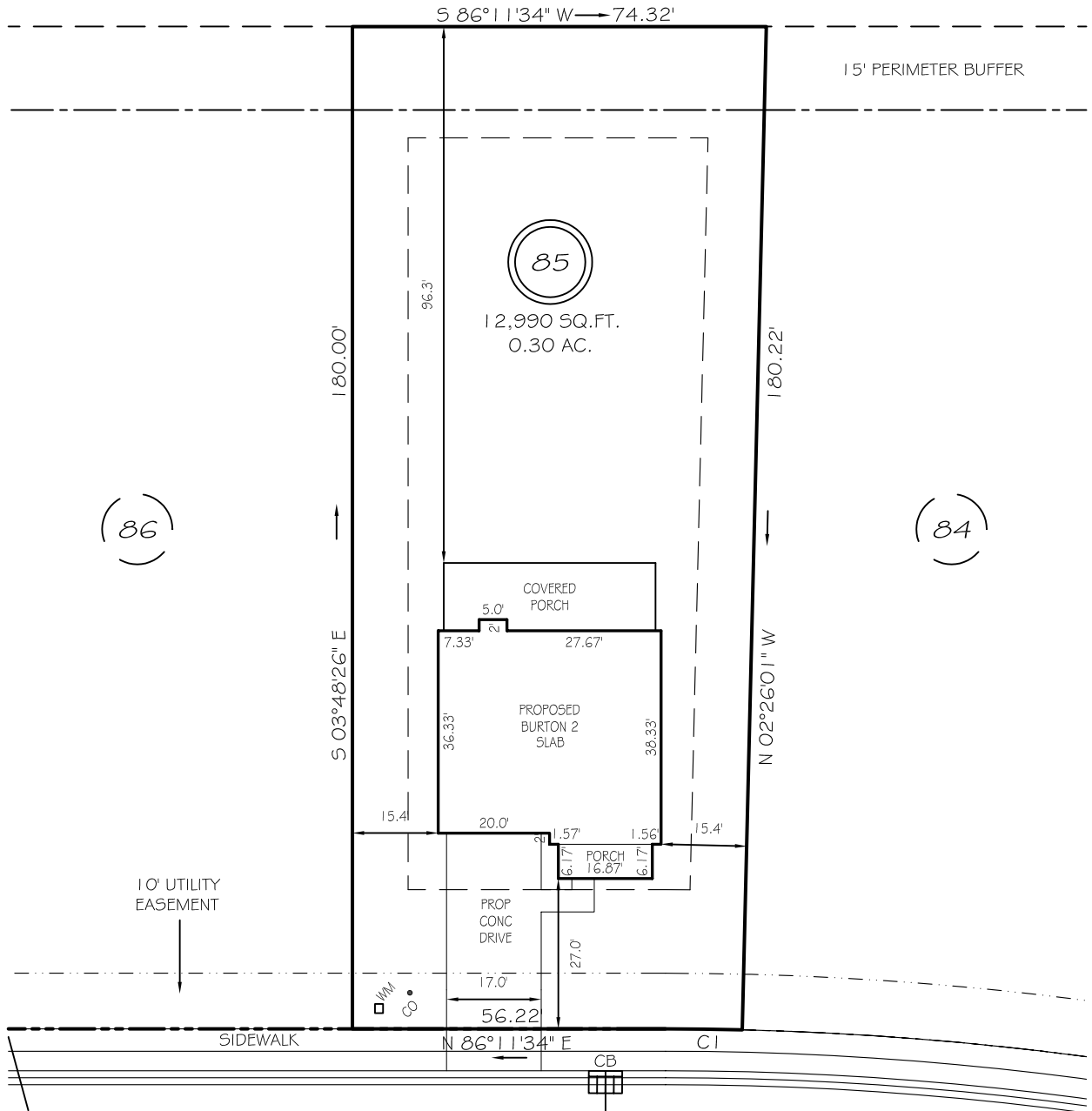


I, MICHAEL P. GRIFFIN, certify that under my direction and supervision this map was drawn from an actual field survey; that the error of closure of the survey as calculated by coordinates is 1: 10,000+; that the area shown hereon was calculated by coordinates.

Witness my hand and seal this day of MONTH 2023.

BK 2022 PG5 203-205  
HARNETT CO. REGISTRY

N/F  
TRAVIS SCOTT WESTER  
ESTATE 92E, PG 105



WINDING CREEK DRIVE

50' PUBLIC R/W & UTILITY EASEMENT

SETBACKS

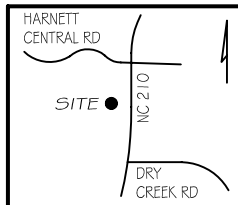
FRONT	25'
REAR	20'
SIDE	10'
CORNER SIDE	20'

CI R=575.00' L=13.79' N86°52'46"E 13.79'

**PRELIMINARY**  
NOT FOR RECORDATION,  
SALES OR CONVEYANCE

LEGEND

EIP	EXISTING IRON PIPE	FES	FLARED END SECTION
IPS	IRON PIPE SET	WM	WATER METER
R/W	RIGHT OF WAY	CO	CLEAN OUT
N/F	NOW OR FORMERLY	FH	FIRE HYDRANT
EIS	EXISTING IRON STAKE	CB	CATCH BASIN



GRIFFIN LAND SURVEYING, INC.

P. O. BOX 148  
FUQUAY-VARINA, NC 27526  
(919) - 567 - 1963

PLOT PLAN  
FOR  
**DRB HOMES**  
THE FARM AT  
NEILLS CREEK  
LOT 85

WINDING CREEK DRIVE  
NORTH CAROLINA  
HARNETT COUNTY NEILL'S CREEK TWSHP

DRAWN BY <b>KDF</b>	DATE <b>7/26/23</b>
CHECKED BY <b>MPG</b>	SCALE <b>1" = 30'</b>