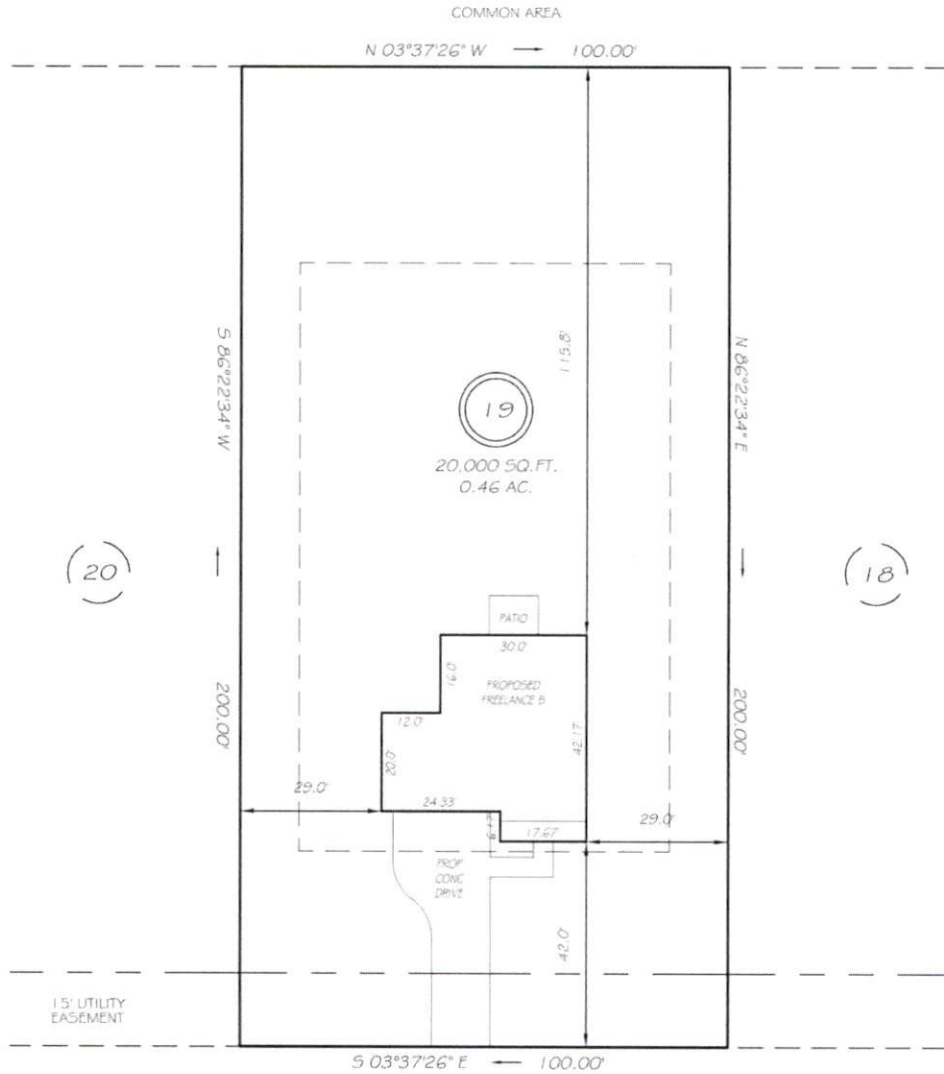


I, MICHAEL P. GRIFFIN, certify that under my direction and supervision this map was drawn from an actual field survey, that the error of closure of the survey as calculated by coordinates is 1: 10,000+; that the area shown hereon was calculated by coordinates.  
 Witness my hand and seal this day of MONTH 2023.

BK 2022 PAGE 226-227  
 HARNETT CO. REGISTRY



MARY RAYMOND LANE  
 50' RW (PUBLIC & UTILITY ACCESS)

SETBACKS

FRONT	40'
REAR	40'
SIDE	12'

REVISION: LEFT HAND 8/8/23  
 REVISION: MOD DW 7/26/23.

**PRELIMINARY**  
 NOT FOR RECORDATION,  
 SALES OR CONVEYANCE

LEGEND

EIP	EXISTING IRON PIPE	FES	FLARED END SECTION
IPS	IRON PIPE SET	WM	WATER METER
RW	RIGHT OF WAY	CO	CLEAN OUT
N/F	NOW OR FORMERLY	FH	FIRE HYDRANT
EIS	EXISTING IRON STAKE	CB	CATCH BASIN



GRIFFIN LAND SURVEYING, INC.

P.O. BOX 148  
 FUQUAY-VARINA, NC 27526  
 (919) 567-1963

PLOT PLAN  
 FOR  
**DREAM FINDERS HOMES, LLC**

SCHABERT CROSSING SUBDIVISION  
 LOT 19  
 MARY RAYMOND LANE  
 DUNN, N.C.  
 HARNETT COUNTY DUKE TOWNSHIP

DRAWN BY KDF

DATE 7/24/23

CHECKED BY MPG

SCALE 1" = 30'