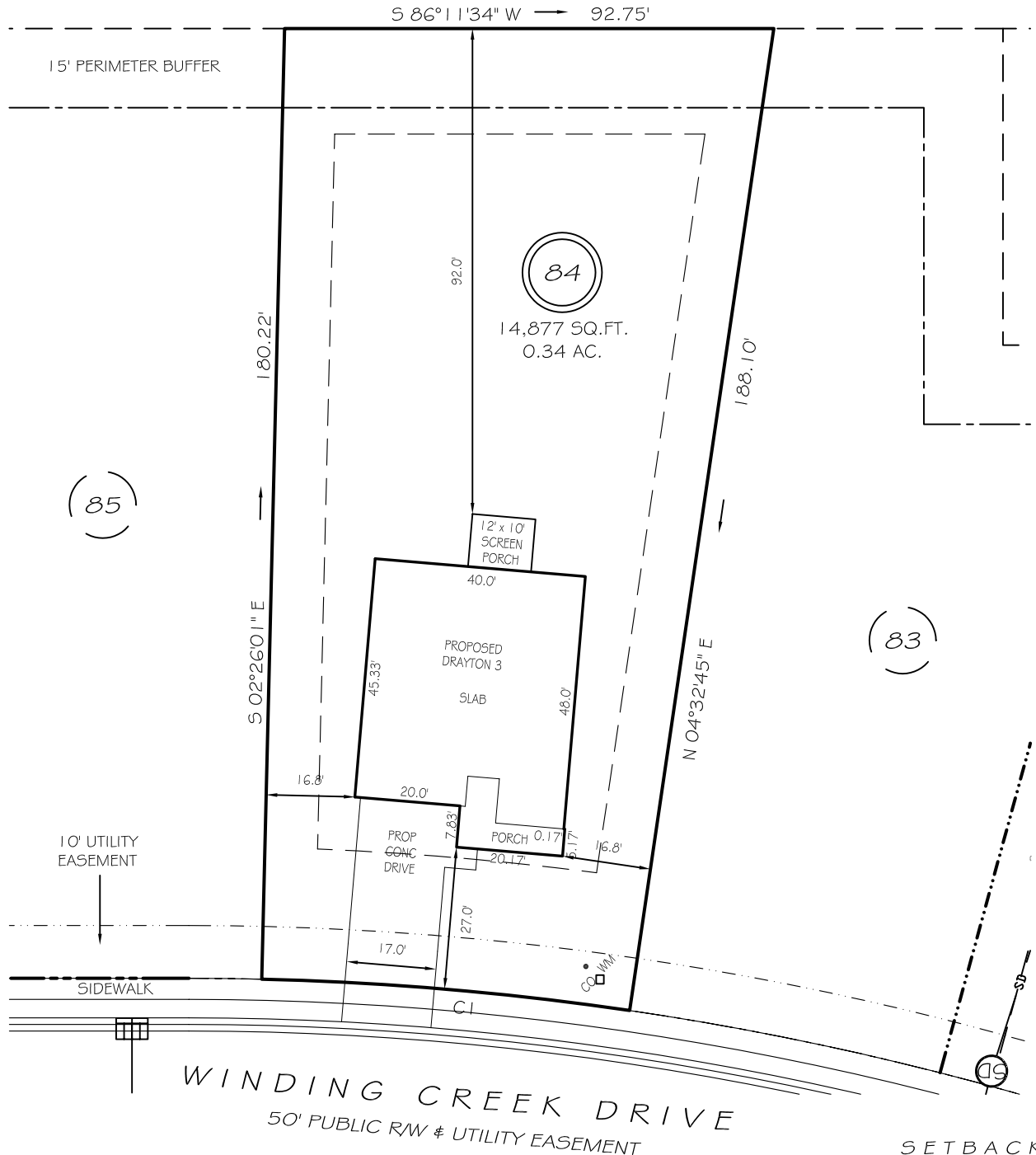


I, MICHAEL P. GRIFFIN, certify that under my direction and supervision this map was drawn from an actual field survey; that the error of closure of the survey as calculated by coordinates is 1: 10,000+; that the area shown hereon was calculated by coordinates.

Witness my hand and seal this day of MONTH 2023.

BK 2022 PG5 203-205
HARNETT CO., REGISTRY

N/F
TRAVIS SCOTT WESTER
ESTATE 92E, PG 105



SETBACKS

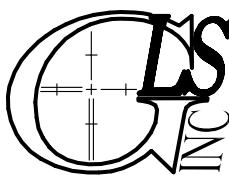
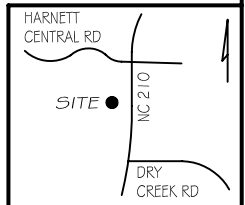
FRONT	25'
REAR	20'
SIDE	10'
CORNER SIDE	20'

CI R=575.00' L=70.04' S88°56'38"E 70.00'

PRELIMINARY
NOT FOR RECORDATION,
SALES OR CONVEYANCE

LEGEND

EIP	EXISTING IRON PIPE	FES	FLARED END SECTION
IPS	IRON PIPE SET	WM	WATER METER
R/W	RIGHT OF WAY	CO	CLEAN OUT
N/F	NOW OR FORMERLY	FH	FIRE HYDRANT
EIS	EXISTING IRON STAKE	CB	CATCH BASIN



GRIFFIN LAND SURVEYING, INC.

P. O. BOX 148
FUQUAY-VARINA, NC 27526
(919) - 567 - 1963

PLOT PLAN
FOR
DRB HOMES
THE FARM AT
NEILLS CREEK
LOT 84

WINDING CREEK DRIVE
NORTH CAROLINA
HARNETT COUNTY NEILL'S CREEK TWSHP

DRAWN BY KDF	DATE 7/26/23
CHECKED BY MPG	SCALE 1" = 30'