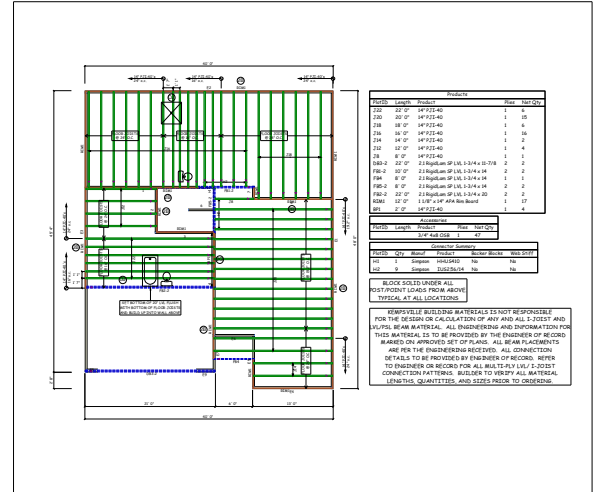




Kempsville Chesapeake Component Plant
 3300 Business Center Drive
 Chesapeake, VA 23323

Phone #: 757-485-8590

Builder: DRB Homes NC LLC
Project: Lot 84 The Farm at
Neill's Creek

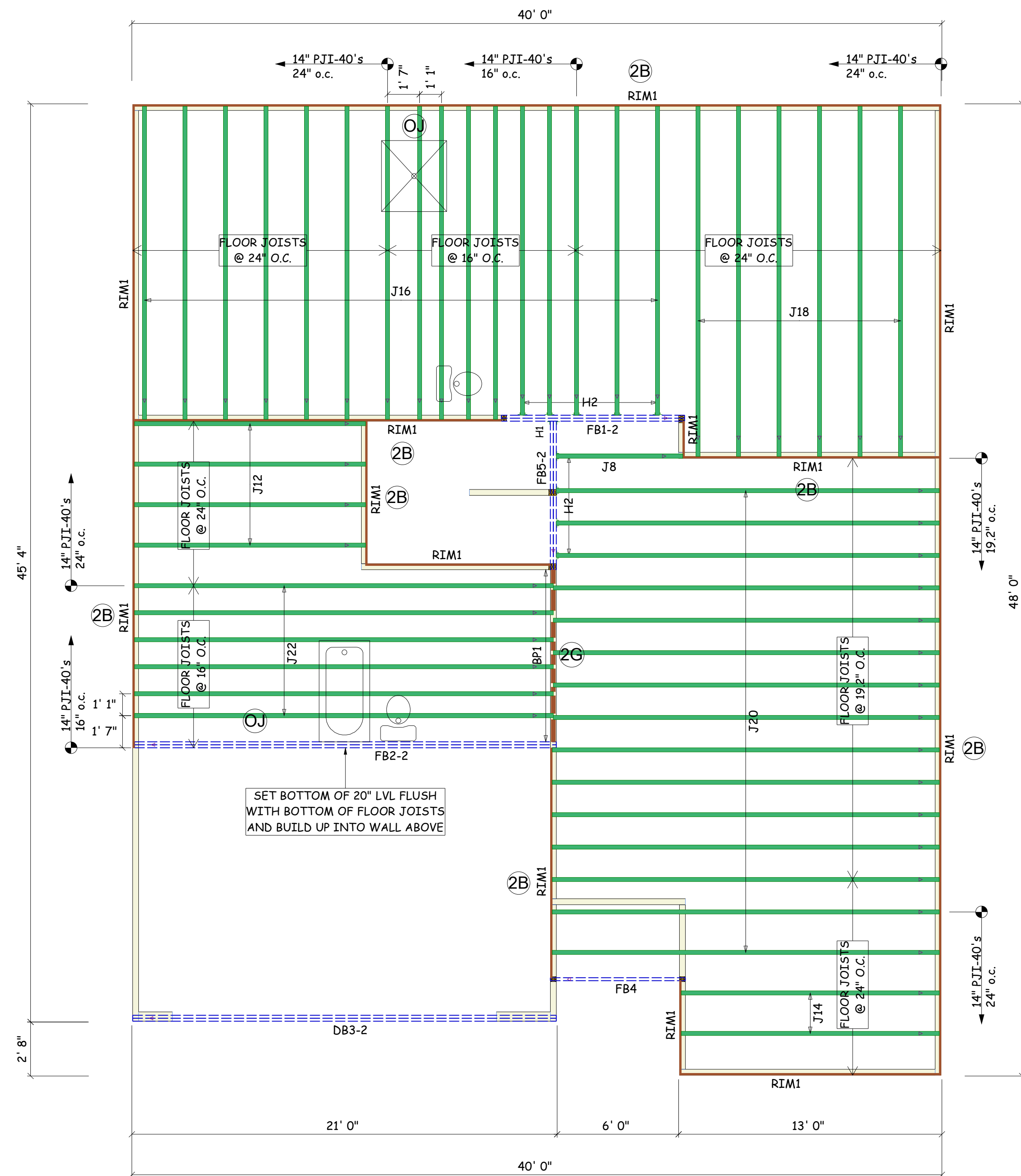


THE PLACEMENT PLAN NOTES:

1. The Placement Plan is a diagram for component installation. It is not an engineered drawing and has not been reviewed by an engineer. The Owner/Building Designer is responsible for obtaining an engineer's review if one is required by the local jurisdiction.
2. The responsibilities of the Owner, Contractor, Building Designer, Component Designer and Component Manufacturer shall be as set forth in ANSI/TPI 1. Capitalized terms shall be as defined in ANSI/TP 1 unless otherwise indicated.
3. Each Component is designed as an individual component utilizing information provided by others. The Owner/Building Designer is responsible for reviewing all Component Submittal Packages and individual Component Design Drawings for compliance with the Construction Documents and compatibility with the overall Building design.
4. Contractor will not proceed with component installation until the Owner/Building Designer has reviewed the Component Submittal Package. Questions on the suitability of any Component will be resolved by the Building Designer.
5. The Building Designer and Contractor are responsible for all temporary and permanent bracing.
6. The Placement Plan assumes the building is dimensionally correct, structurally sound, and in a suitable condition to support each Component during installation and thereafter, including but not limited to installation of all bearing points. Proper design and construction of all structural components, including foundations, headers, beams, walls and columns are the responsibility of the Owner, Building Designer and Contractor.
7. Do not cut, drill, or modify any Component without first consulting the Component Manufacturer or Building Designer. Damaged Components shall not be installed unless directed by the Building Designer or approved by the Component Manufacturer.
8. Components must be handled and installed following all applicable safety standards and best practices, including but not limited to BCSI, OSHA, TPI and local codes. Failure to properly handle, brace or otherwise install Component can result in serious injury or death.

General Notes: ** CUTTING OR DRILLING OF COMPONENTS SHOULD NOT BE DONE WITHOUT CONTACTING COMPONENT SUPPLIER FIRST. CUSTOMER TAKES FULL RESPONSIBILITY FOR COMPONENTS IF CUT BEFORE AUTHORIZATION.

** LVL AND JOISTS MUST BE FULLY CONNECTED TOGETHER PRIOR TO ADDING ANY LOADS.



Products				
PlotID	Length	Product	Plies	Net Qty
J22	22' 0"	14" PJI-40	1	6
J20	20' 0"	14" PJI-40	1	15
J18	18' 0"	14" PJI-40	1	6
J16	16' 0"	14" PJI-40	1	16
J14	14' 0"	14" PJI-40	1	2
J12	12' 0"	14" PJI-40	1	4
J8	8' 0"	14" PJI-40	1	1
DB3-2	22' 0"	2.1 RigidLam SP LVL 1-3/4 x 11-7/8	2	2
FB1-2	10' 0"	2.1 RigidLam SP LVL 1-3/4 x 14	2	2
FB4	8' 0"	2.1 RigidLam SP LVL 1-3/4 x 14	1	1
FB2-2	22' 0"	2.1 RigidLam SP LVL 1-3/4 x 20	2	2
RIM1	12' 0"	1 1/8" x 14" APA Rim Board	1	17
BP1	2' 0"	14" PJI-40	1	4

Accessories				
PlotID	Length	Product	Plies	Net Qty
		3/4" 4x8 OSB	1	47

Connector Summary					
PlotID	Qty	Manuf	Product	Backer Blocks	Web Stiff
H1	1	Simpson	HHU5410	No	No
H2	9	Simpson	IUS2.56/14	No	No

BLOCK SOLID UNDER ALL POST/POINT LOADS FROM ABOVE. TYPICAL AT ALL LOCATIONS

KEMPVILLE BUILDING MATERIALS IS NOT RESPONSIBLE FOR THE DESIGN OR CALCULATION OF ANY AND ALL I-JOIST AND LVL/PSL BEAM MATERIAL. ALL ENGINEERING AND INFORMATION FOR THIS MATERIAL IS TO BE PROVIDED BY THE ENGINEER OF RECORD MARKED ON APPROVED SET OF PLANS. ALL BEAM PLACEMENTS ARE PER THE ENGINEERING RECEIVED. ALL CONNECTION DETAILS TO BE PROVIDED BY ENGINEER OF RECORD. REFER TO ENGINEER OR RECORD FOR ALL MULTI-PLY LVL/ I-JOIST CONNECTION PATTERNS. BUILDER TO VERIFY ALL MATERIAL LENGTHS, QUANTITIES, AND SIZES PRIOR TO ORDERING.

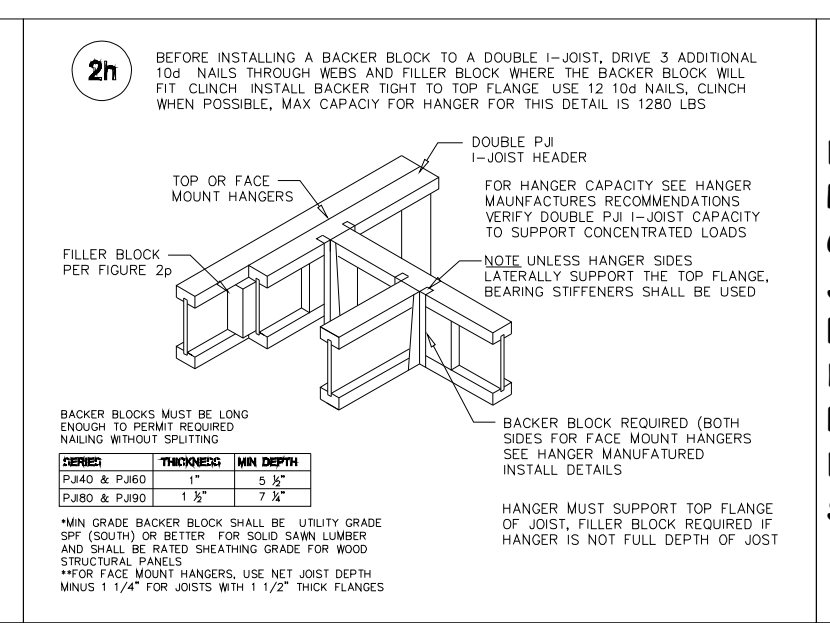
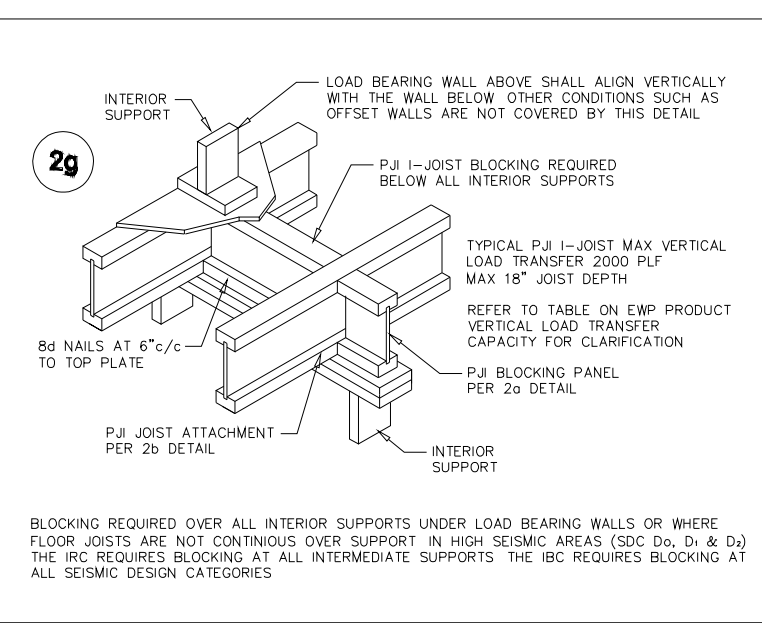
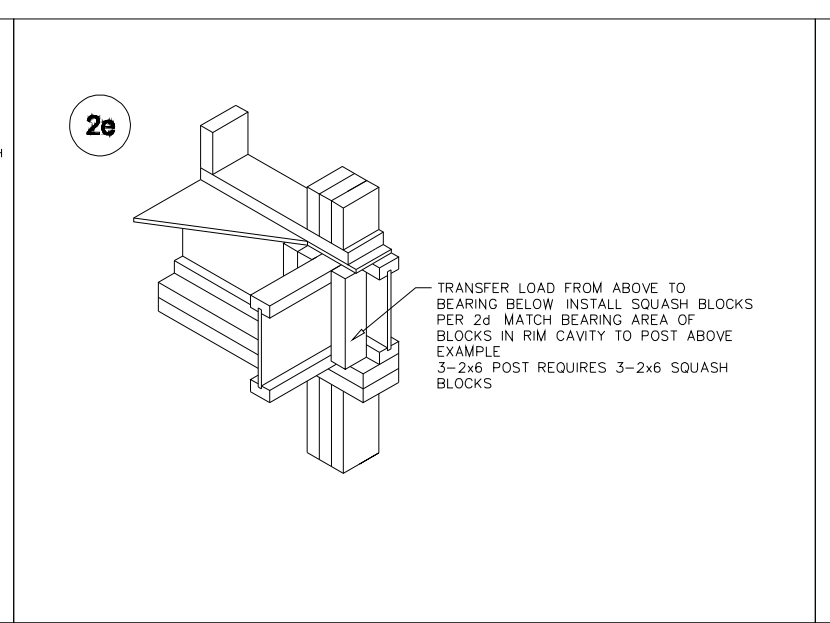
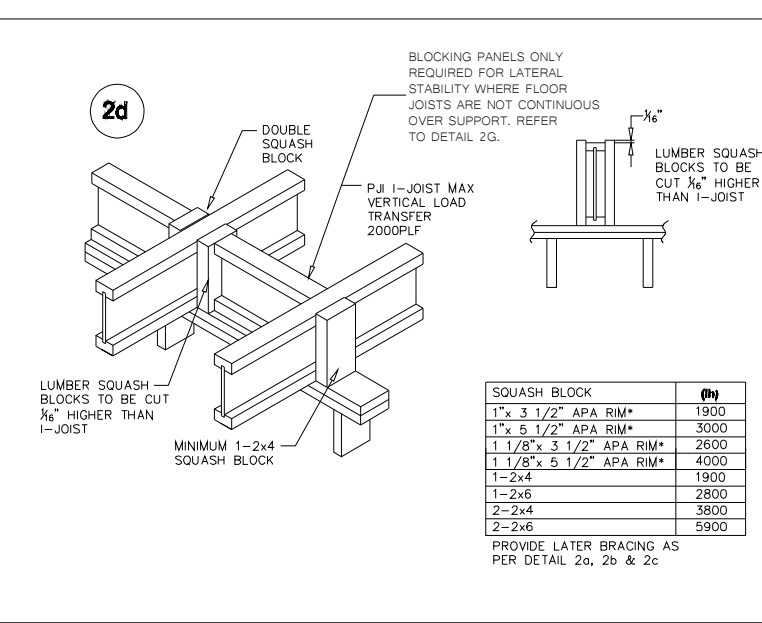
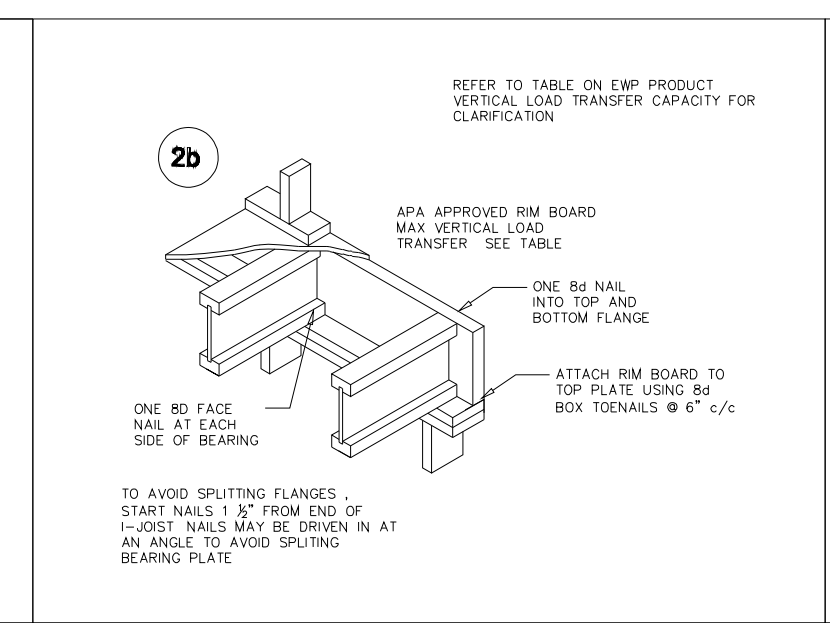
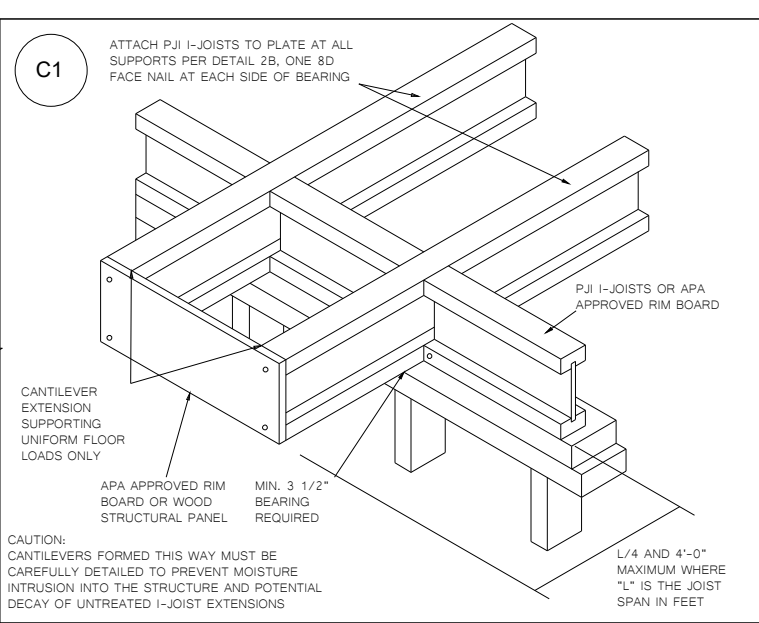
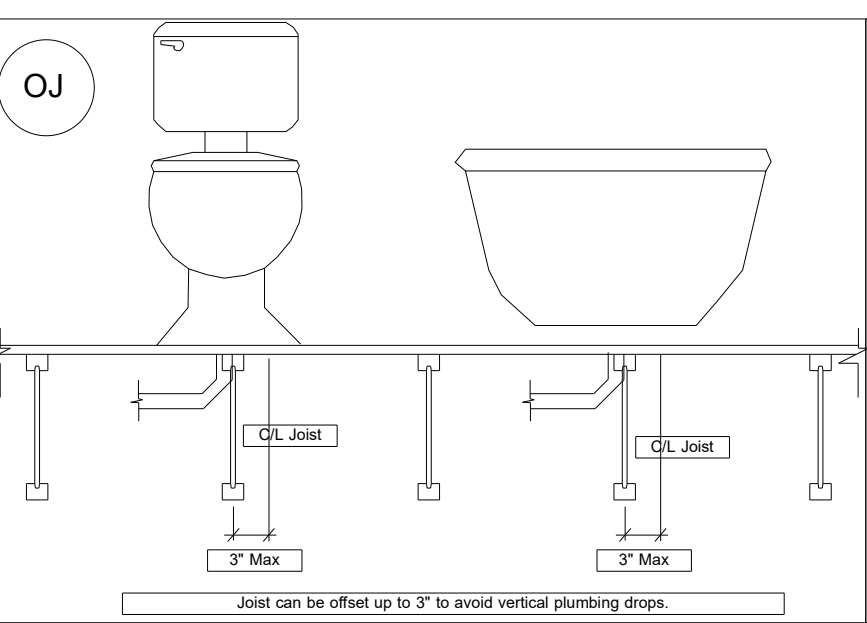
Revisions	
00/00/00	Name
00/00/00	Name
00/00/00	Name
00/00/00	Name
00/00/00	Name

This is an I-Joist Placement Plan Only. All designs of I-joists follow the IBC/IRC Code Requirements along with Manufacturer's guidelines. This is NOT an engineered placement plan. This placement plan is created from plans provided by the customer using Manufacturer's guidelines. It is the responsibility of the EOR, or builder to review and approve all bearing conditions, connections, spans, loading, product usage, and quantities. Do not notch or drill holes in beams or flanges on joists without prior approval from the manufacturing Representative unless following hole guidelines in the installation guide of product. Builder takes full responsibility for doing so and NO Back charge will be accepted.



DRB HOMES NC LLC
MODEL 2695 - DAYTON
 LOT 84 THE FARM AT NEILL'S CREEK

2ND FLOOR LAYOUT



LABEL LEGEND

BBO = Beam by Others
 PBO = Post by Others
 GBO = Girder by Others
 J = I-Joist
 FB = Flush Beam
 DB = Dropped Beam
 RB = Roof Beam
 BP = Blocking Panels
 SB = Squash Blocks

** PLUMBING DROPS NOTED ARE IN APPROXIMATE LOCATIONS PER PLAN. BUILDER MUST VERIFY LOCATIONS BEFORE SETTING JOISTS.

** ALL POINT LOADS FROM ABOVE MUST BE TRANSFERRED TO BEARING FROM UNDER SIDE OF SHEATHING.

** REFER TO INSTALLATION GUIDE FOR PLY TO PLY CONNECTIONS.

** DIMENSIONS ARE READ AS: FOOT-INCH-SIXTEENTH. ** DAMAGED FLOOR JOISTS SHOULD NOT BE INSTALLED UNLESS APPROVED BY COMPONENT PLANT. ** FRAMER MUST REFER TO PLANS WHILE SETTING COMPONENTS.

Scale: 1/4" = 1'-0"
 Date: 8/8/23
 Designer: SCB
 Project #: 23070133
 Sheet Number:
1 / 1