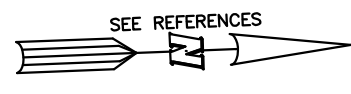
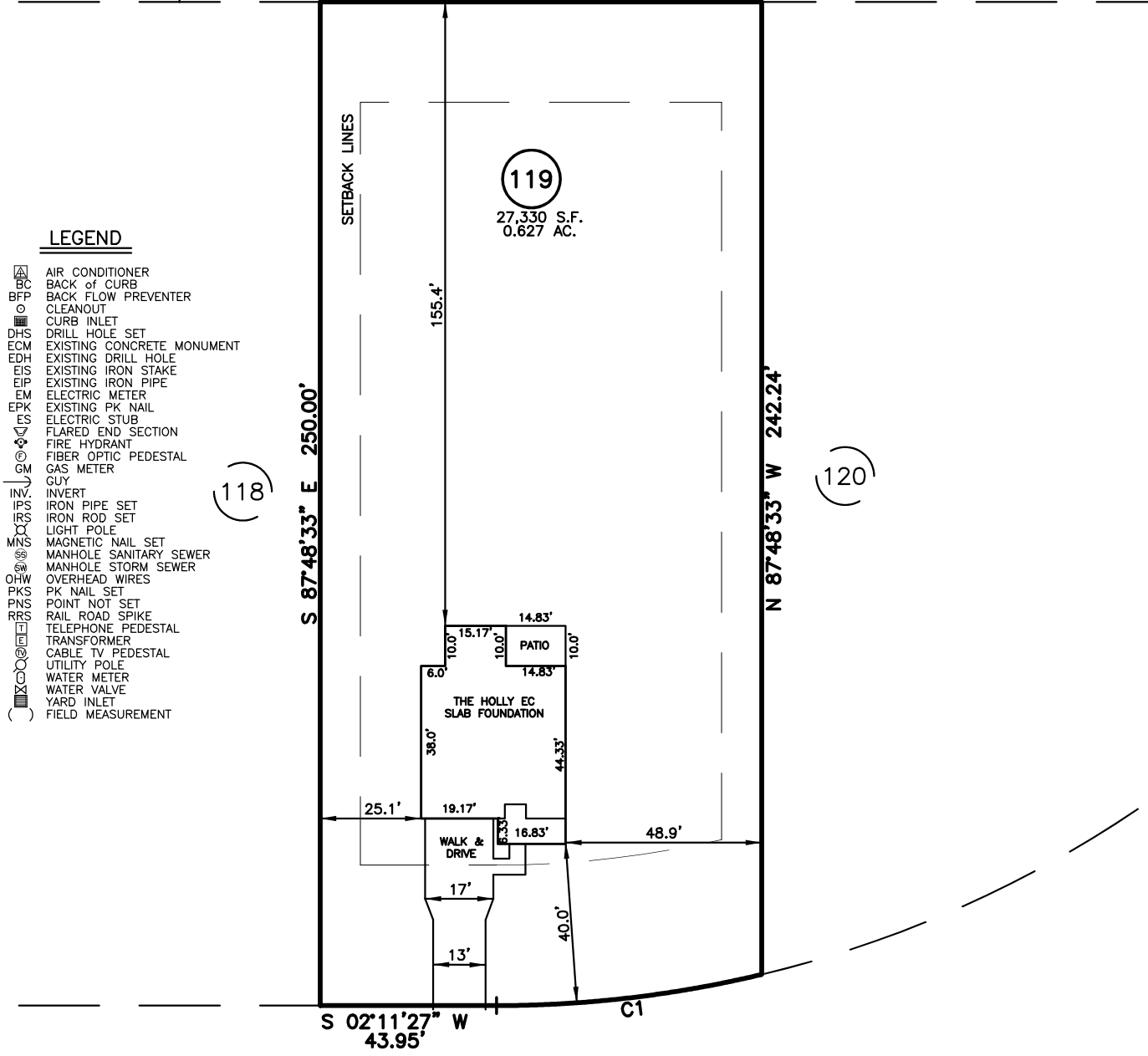


PLOT PLAN FOR  
**NEW HOME, INC., LLC**  
 54 BEACON HILL ROAD  
 LOT 119, DUNCAN'S CREEK, PHASE I  
 UPPER LITTLE CREEK TOWNSHIP, HARNETT COUNTY, NORTH CAROLINA

(121)



S 02°11'27" W 110.00'



- LEGEND**
- △ AIR CONDITIONER
  - BC BACK of CURB
  - BFP BACK FLOW PREVENTER
  - CLEANOUT
  - CURB INLET
  - DHS DRILL HOLE SET
  - ECM EXISTING CONCRETE MONUMENT
  - EDH EXISTING DRILL HOLE
  - EIS EXISTING IRON STAKE
  - EIP EXISTING IRON PIPE
  - EM ELECTRIC METER
  - EPK EXISTING PK NAIL
  - ES ELECTRIC STUB
  - FLA FLARED END SECTION
  - FHY FIRE HYDRANT
  - FOP FIBER OPTIC PEDESTAL
  - GM GAS METER
  - GUY GUY
  - INV. INVERT
  - IPS IRON PIPE SET
  - IRS IRON ROD SET
  - LP LIGHT POLE
  - MNS MAGNETIC NAIL SET
  - MS MANHOLE SANITARY SEWER
  - MS MANHOLE STORM SEWER
  - OHV OVERHEAD WIRES
  - PKS PK NAIL SET
  - PNS POINT NOT SET
  - RRS RAIL ROAD SPIKE
  - TEP TELEPHONE PEDESTAL
  - TRF TRANSFORMER
  - CTV CABLE TV PEDESTAL
  - UP UTILITY POLE
  - WM WATER METER
  - WV WATER VALVE
  - YI YARD INLET
  - ( ) FIELD MEASUREMENT

(118)

(120)

S 02°11'27" W 43.95'  
**BEACON HILL ROAD**  
 50' PUBLIC R/W

NUM	RADIUS	ARC	DELTA	CHORD BRG	CHORD
C1	285.00'	66.66'	13°24'03"	N 04°30'35" W	66.51'

**SETBACK INFO**

FRONT:	35'
REAR:	25'
SIDES:	10'
CORNER SIDE:	20'
AGGREGATE SIDE:	20'

IMPERVIOUS SURFACES	
HOUSE	1,620 S.F.
WALK & DRIVE	750 S.F.
PATIO	150 S.F.
<b>TOTAL</b>	<b>2,520 S.F.</b>

**REFERENCES:**  
 B.M. 2022, PG. 594-596

SCALE: 1" = 40'

- NOTES**
- THIS SURVEY SUBJECT TO ANY FACTS THAT MAY BE DISCLOSED BY A FULL AND ACCURATE TITLE SEARCH.
  - THIS MAP MAY NOT BE A CERTIFIED SURVEY AND HAS NOT BEEN REVIEWED BY A LOCAL GOVERNMENT AGENCY FOR COMPLIANCE WITH ANY APPLICABLE LAND DEVELOPMENT REGULATIONS AND HAS NOT BEEN REVIEWED FOR COMPLIANCE WITH RECORDING REQUIREMENTS FOR PLATS.

PLOT PLAN  
 PRELIMINARY PLAT- NOT FOR RECORDATION,  
 CONVEYANCE OR SALES

REV CODE: 1.FLIP, 2.PLAN, 3.ROTATE, 4.MOVE, 5.SS  
 6.SEVERAL OF ABOVE, 7.LAND FEATURE, 8. OTHER

DATE: AUG. 2, 2023

F.B. \_\_\_\_\_

**RWK, PA**  
**ENGINEERING ~ SURVEYING**  
 CORPORATE LICENSE: C-1771  
 101 W. MAIN ST., SUITE 202  
 GARNER, NC 27529  
 PHONE (919) 779-4854  
 FAX (919) 779-4056