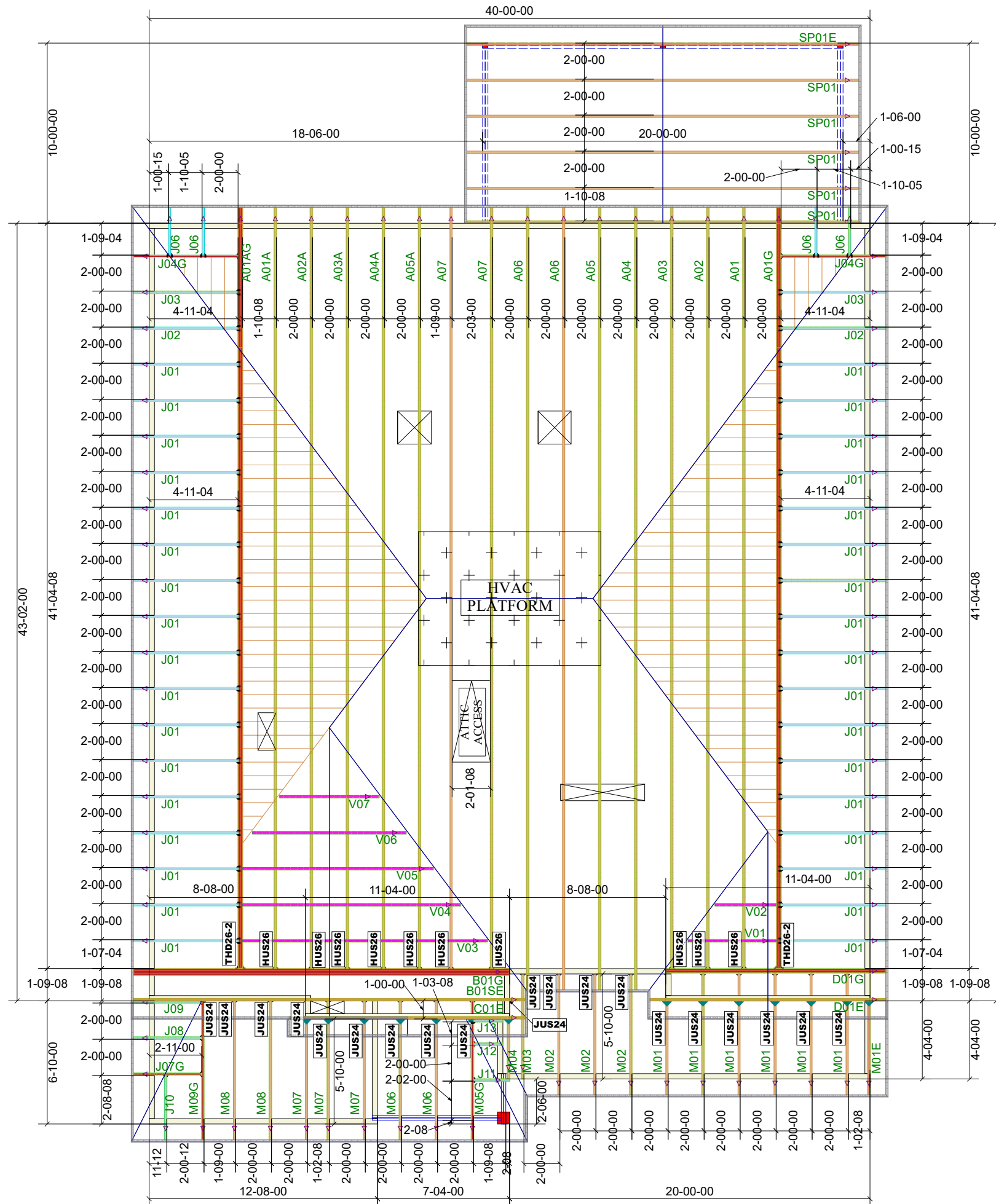


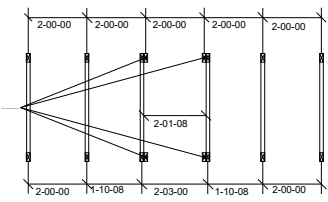
THIS LAYOUT IS INTENDED FOR THE PURPOSE OF TRUSS LOCATION AND PLACEMENT ONLY. REFER TO THE BUILDING PLANS FOR ACTUAL BUILDING CONSTRUCTION.



Truss Connector Total List		
Qty	Product	Manuf
10	HUS26	Simpson
2	THD26-2	Simpson
19	JUS24	Simpson

THE PURPOSE OF THIS DETAIL IS TO ILLUSTRATE HOW TO PROPERLY SPACE 24" O.C. ROOF TRUSSES TO ALLOW FOR A 25 1/2" OPENING FOR PULL DOWN ATTIC ACCESS

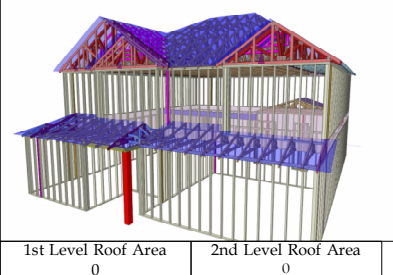
TRUSSES TO BE DESIGNED AT 24" ON CENTER



2x4 NAILER ATTACHED TO ENTIRE TOP CHORD AND BOTTOM CHORD WITH 10d NAILS @ 131 X 3" AT 12" ON CENTER. OMIT BOTTOM CHORD NAILERS AT THE ATTIC ACCESS LOCATION ONLY.

TRUSS LAYOUT DIMENSIONS AT PULL DOWN ATTIC ACCESS

FRAMER NOTE:
 - TRUSSES M01E, M01, M04, M05G, M06, AND M07 CREATE THE FLOOR SYSTEM ABOVE AND HANG INTO LVL BEAM IN THE FLOOR SYSTEM.



DEDICATED TO QUALITY AND EXCELLENCE
 200 EMMETT ROAD
 DUNN, NORTH CAROLINA 28334
 PHONE: 910-892-8400

PROJECT: LOT 52 BIRCHWOOD GROVE
CUSTOMER: KB HOME
MODEL: 240-3174 - ELEVATION C - 10X20 SCREEN PORCH - GR
QUOTE #: 37725
PRINT DATE: 7/17/2023
DRAWN BY: Mike Bolt
SCALE: N.T.S

TOP LIVE LOAD: 20
 TOP DEAD LOAD: 10
 BOTTOM DEAD LOAD: 10
 WIND SPEED: 130

GENERAL NOTES:
 - DO NOT CUT OR MODIFY TRUSSES
 - TRUSSES ARE SPACED 24" ON CENTER UNLESS OTHERWISE NOTED
 - REFER TO THE INDIVIDUAL TRUSS DESIGN DRAWINGS FOR THE LOCATION OF LATERAL BRACING AND MULTI-PLY CONNECTION REQUIREMENTS.
 - PER ANSII TPI 1-2002 THE TRUSS ENGINEER IS RESPONSIBLE FOR TRUSS TO TRUSS CONNECTIONS AND TRUSS PLY TO PLY CONNECTIONS. THIS TRUSS CONNECTION PLAN RECOMMENDS TRUSS TO BEARING CONNECTIONS AND TRUSS TO BEAM CONNECTIONS WHICH SHALL BE REVIEWED BY THE BUILDING DESIGNER. IT IS THE RESPONSIBILITY OF THE BUILDING DESIGNER TO RESOLVE ALL ROOF FORCES ADEQUATELY TO THE FOUNDATION.