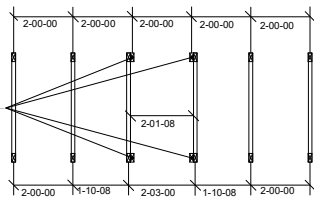


**THIS LAYOUT IS INTENDED FOR THE PURPOSE OF TRUSS LOCATION AND PLACEMENT ONLY. REFER TO THE BUILDING PLANS FOR ACTUAL BUILDING CONSTRUCTION.**

THE PURPOSE OF THIS DETAIL IS TO ILLUSTRATE HOW TO PROPERLY SPACE 24" O.C. ROOF TRUSSES TO ALLOW FOR A 25 1/2" OPENING FOR PULL DOWN ATTIC ACCESS

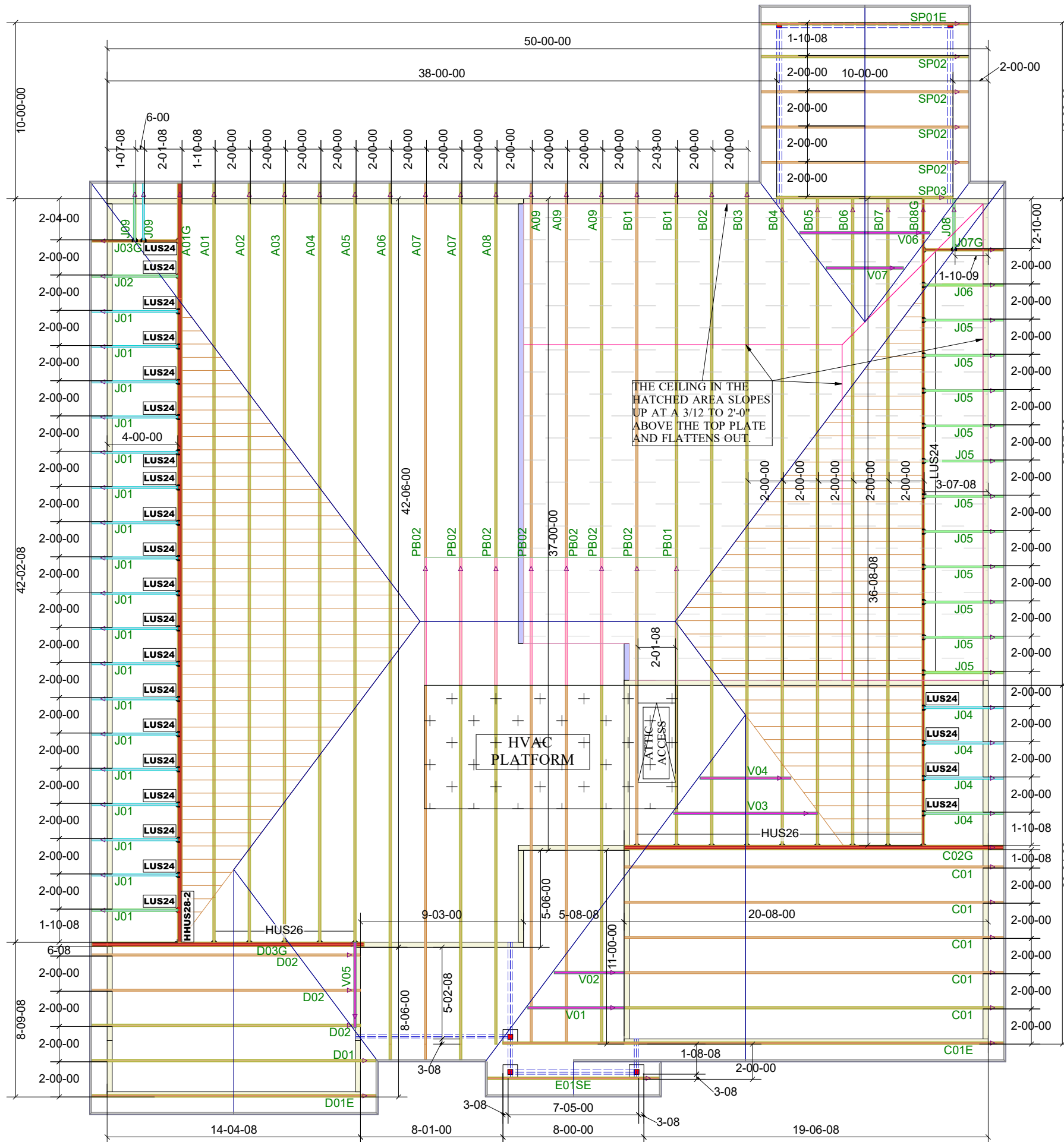
TRUSSES TO BE DESIGNED AT 24" ON CENTER

2x4 NAILER ATTACHED TO ENTIRE TOP CHORD AND BOTTOM CHORD WITH 10d NAILS @ 12" ON CENTER. OMIT BOTTOM CHORD NAILERS AT THE ATTIC ACCESS LOCATION ONLY.



TRUSS LAYOUT DIMENSIONS AT PULL DOWN ATTIC ACCESS

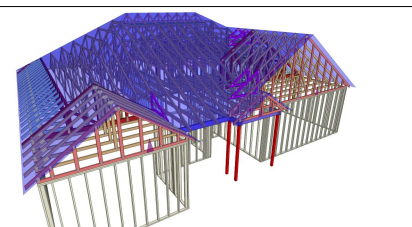
Truss Connector Total List		
Qty	Product	Manuf
1	HHUS28-2	Simpson
14	HUS26	Simpson
37	LUS24	Simpson



THE CEILING IN THE HATCHED AREA SLOPES UP AT A 3/12 TO 2'-0" ABOVE THE TOP PLATE AND FLATTENS OUT.

HVAC PLATFORM

ATTIC ACCESS



1st Level Roof Area: 0  
2nd Level Roof Area: 0



DEDICATED TO QUALITY AND EXCELLENCE  
200 EMMETT ROAD  
DUNN, NORTH CAROLINA 28334  
PHONE: 910-892-8400

PROJECT: LOT 171 BIRCHWOOD GROVE

CUSTOMER: KB HOME

MODEL: 150-1910 - ELEVATION C - VOLUME CEILING - 10X10 SCREENED COVERED PATIO - GR

QUOTE #: 05537  
PRINT DATE: 1/8/2024  
DRAWN BY: Mike Bolt  
SCALE: N.T.S

TOP LIVE LOAD: 20
TOP DEAD LOAD: 10
BOTTOM DEAD LOAD: 10
WIND SPEED: 130

GENERAL NOTES:  
DO NOT CUT OR MODIFY TRUSSES  
TRUSSES ARE SPACED 24" ON CENTER UNLESS OTHERWISE NOTED  
REFER TO THE INDIVIDUAL TRUSS DESIGN DRAWINGS FOR THE LOCATION OF LATERAL BRACING AND MULTI-PLY CONNECTION REQUIREMENTS.  
PER ANSII TPI 1-2002 THE TRUSS ENGINEER IS RESPONSIBLE FOR TRUSS TO TRUSS CONNECTIONS AND TRUSS PLY TO PLY CONNECTIONS. THIS TRUSS PLAN RECOMMENDS TRUSS TO BEARING CONNECTIONS AND TRUSS TO BEAM CONNECTIONS WHICH SHALL BE REVIEWED BY THE BUILDING DESIGNER. IT IS THE RESPONSIBILITY OF THE BUILDING DESIGNER TO RESOLVE ALL ROOF FORCES ADEQUATELY TO THE FOUNDATION.