

**THIS LAYOUT IS INTENDED FOR THE PURPOSE OF TRUSS LOCATION AND PLACEMENT ONLY. REFER TO THE BUILDING PLANS FOR ACTUAL BUILDING CONSTRUCTION.**



DEDICATED TO QUALITY AND EXCELLENCE  
200 EMMETT ROAD  
DUNN, NORTH CAROLINA 28334  
PHONE: 910-892-8400

PROJECT: **LOT 29 BIRCHWOOD GROVE**

CUSTOMER: **KB HOME**

MODEL: **150-1910 - ELEVATION B - VOLUME CEILING - 10X10 SCREENED COVERED PATIO - GR**

QUOTE #: **05568** PRINT DATE: **12/8/2023** DRAWN BY: **Mike Bolt** SCALE: **N.T.S**

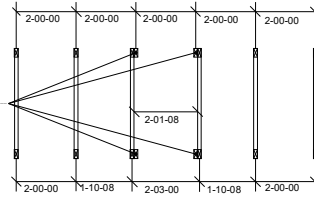
TOP LIVE LOAD: 20  
TOP DEAD LOAD: 10  
BOTTOM DEAD LOAD: 10  
WIND SPEED: 130

GENERAL NOTES:  
- DO NOT CUT OR MODIFY TRUSSES  
- TRUSSES ARE SPACED 24" ON CENTER UNLESS OTHERWISE NOTED  
- REFER TO THE INDIVIDUAL TRUSS DESIGN DRAWINGS FOR THE LOCATION OF LATERAL BRACING AND MULTI-PLY CONNECTION REQUIREMENTS.  
- PER ANSI TPI 1-2002 THE TRUSS ENGINEER IS RESPONSIBLE FOR TRUSS TO TRUSS CONNECTIONS AND TRUSS PLY TO PLY CONNECTIONS. THIS TRUSS CONNECTION PLAN RECOMMENDS TRUSS TO BEARING CONNECTIONS AND TRUSS TO BEAM CONNECTIONS WHICH SHALL BE REVIEWED BY THE BUILDING DESIGNER. IT IS THE RESPONSIBILITY OF THE BUILDING DESIGNER TO RESOLVE ALL ROOF FORCES ADEQUATELY TO THE FOUNDATION.

Truss Connector Total List		
Qty	Product	Manuf
7	HUS26	MiTek

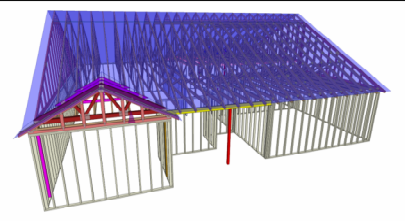
THE PURPOSE OF THIS DETAIL IS TO ILLUSTRATE HOW TO PROPERLY SPACE 24" O.C. ROOF TRUSSES TO ALLOW FOR A 25 1/2" OPENING FOR PULL DOWN ATTIC ACCESS

TRUSSES TO BE DESIGNED AT 24" ON CENTER

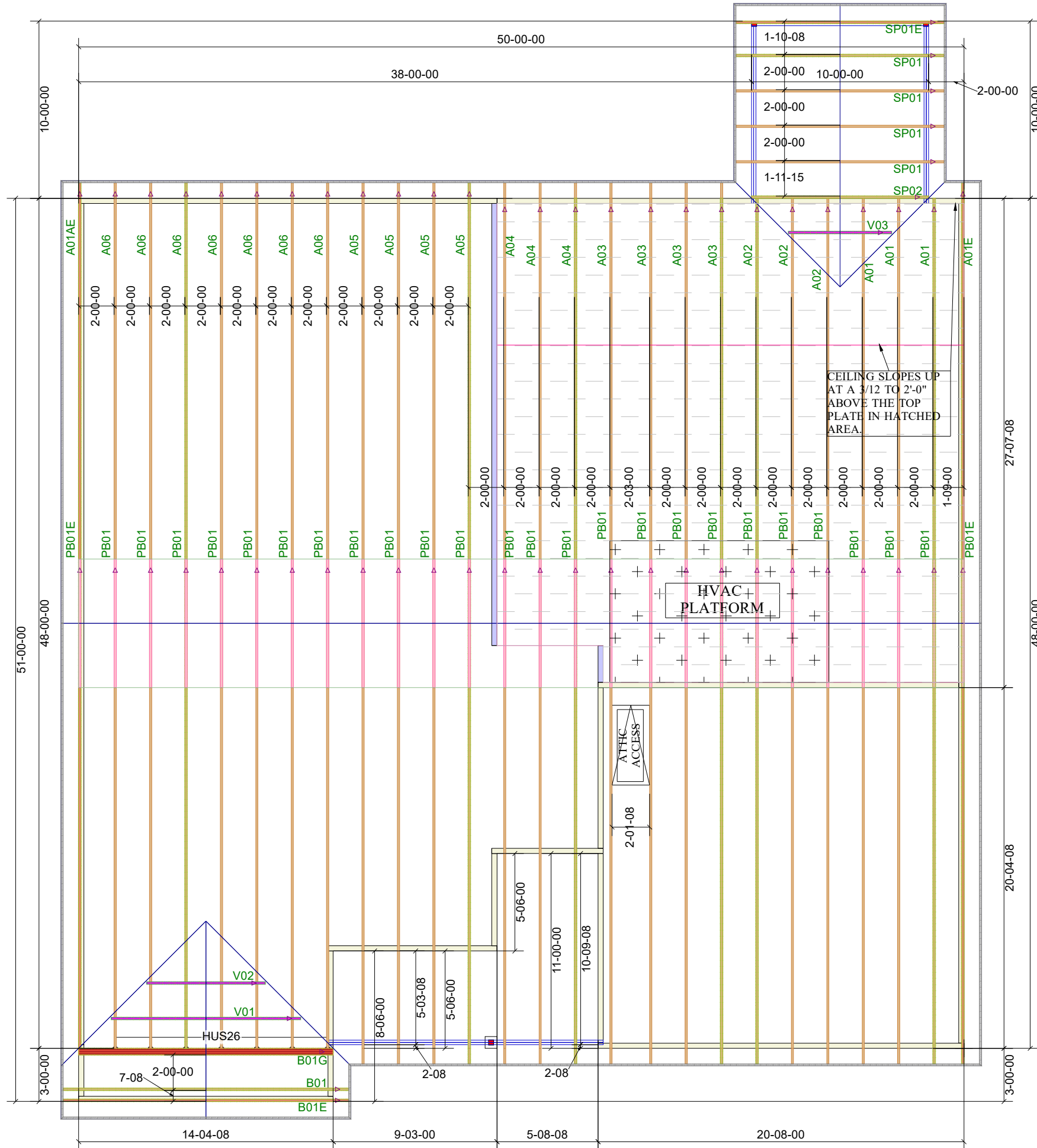


TRUSS LAYOUT DIMENSIONS AT PULL DOWN ATTIC ACCESS

2x4 NAILER ATTACHED TO ENTIRE TOP CHORD AND BOTTOM CHORD WITH 10d NAILS @ 12" X 3" AT 12" ON CENTER. OMIT BOTTOM CHORD NAILERS AT THE ATTIC ACCESS LOCATION ONLY.



1st Level Roof Area: 0  
2nd Level Roof Area: 0



CEILING SLOPES UP AT A 3/12 TO 2'-0" ABOVE THE TOP PLATE IN HATCHED AREA.

HVAC PLATFORM

ATTIC ACCESS

HUS26

B01G

B01

B01E