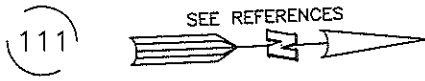
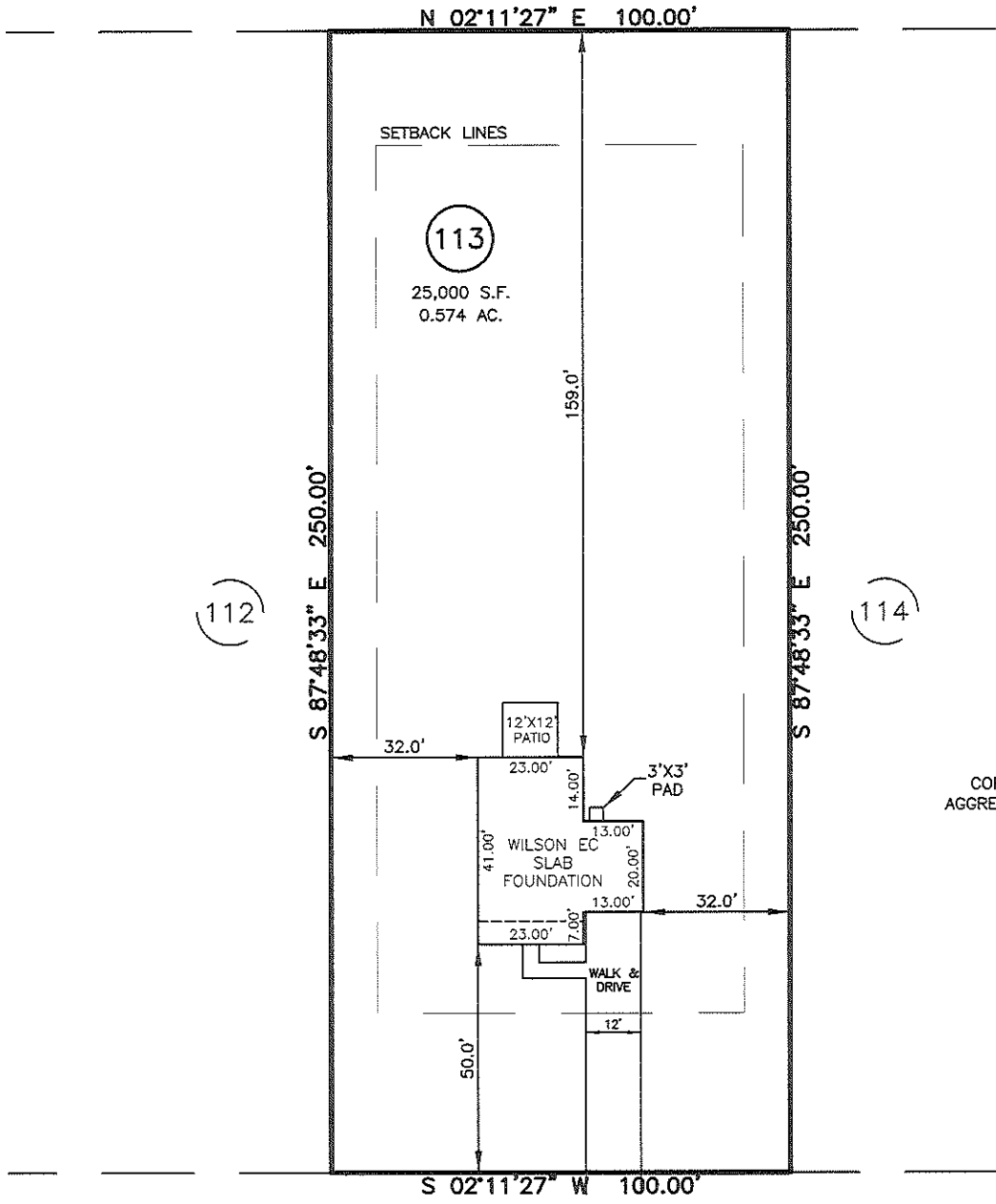


PLOT PLAN FOR  
**NEW HOME, INC., LLC**  
 200 BEACON HILL ROAD  
 LOT 113, DUNCAN'S CREEK, PHASE I  
 UPPER LITTLE CREEK TOWNSHIP, HARNETT COUNTY, NORTH CAROLINA



**LEGEND**

- ◻ AIR CONDITIONER
- BC BACK of CURB
- BFP BACK FLOW PREVENTER
- CLEANOUT
- ◻ CURB INLET
- DHS DRILL HOLE SET
- ECM EXISTING CONCRETE MONUMENT
- EDH EXISTING DRILL HOLE
- EIS EXISTING IRON STAKE
- EIP EXISTING IRON PIPE
- EM ELECTRIC METER
- EPK EXISTING PK NAIL
- ES ELECTRIC STUB
- FLR FLARED END SECTION
- FH FIRE HYDRANT
- FOP FIBER OPTIC PEDESTAL
- GM GAS METER
- GUY GUY
- INV. INVERT
- IPS IRON PIPE SET
- IRS IRON ROD SET
- LP LIGHT POLE
- MNS MAGNETIC NAIL SET
- MNS MANHOLE SANITARY SEWER
- MNS MANHOLE STORM SEWER
- OHW OVERHEAD WIRES
- PKS PK NAIL SET
- PNS POINT NOT SET
- RRS RAIL ROAD SPIKE
- TEP TELEPHONE PEDESTAL
- TRF TRANSFORMER
- CVP CABLE TV PEDESTAL
- UP UTILITY POLE
- WM WATER METER
- WV WATER VALVE
- YI YARD INLET
- ( ) FIELD MEASUREMENT



**SETBACK INFO**

- FRONT: \_\_\_\_\_ 35'
- REAR: \_\_\_\_\_ 25'
- SIDES: \_\_\_\_\_ 10'
- CORNER SIDE: \_\_\_\_\_ 20'
- AGGREGATE SIDE: \_\_\_\_\_ 20'

**REFERENCES:**

B.M. 2022, PG. 594-596

**BEACON HILL ROAD**  
 50' PUBLIC R/W

IMPERVIOUS SURFACES	
HOUSE	1,210 S.F.
WALK & DRIVE	810 S.F.
PATIO	160 S.F.
TOTAL	2,180 S.F.



SCALE: 1" = 40'

**NOTES**

1. THIS SURVEY SUBJECT TO ANY FACTS THAT MAY BE DISCLOSED BY A FULL AND ACCURATE TITLE SEARCH.
2. THIS MAP MAY NOT BE A CERTIFIED SURVEY AND HAS NOT BEEN REVIEWED BY A LOCAL GOVERNMENT AGENCY FOR COMPLIANCE WITH ANY APPLICABLE LAND DEVELOPMENT REGULATIONS AND HAS NOT BEEN REVIEWED FOR COMPLIANCE WITH RECORDING REQUIREMENTS FOR PLATS.

PLOT PLAN  
 PRELIMINARY PLAT- NOT FOR RECORDATION,  
 CONVEYANCE OR SALES

DATE: JULY 26, 2023

F.B. \_\_\_\_\_

**RWK, PA**  
**ENGINEERING ~ SURVEYING**  
 CORPORATE LICENSE: C-1771  
 101 W. MAIN ST., SUITE 202  
 GARNER, NC 27529  
 PHONE (919) 779-4854  
 FAX (919) 779-4056

REV CODE: 1.FLIP, 2.PLAN, 3.ROTATE, 4.MOVE, 5.SS  
 6.SEVERAL OF ABOVE, 7.LAND FEATURE, 8. OTHER