

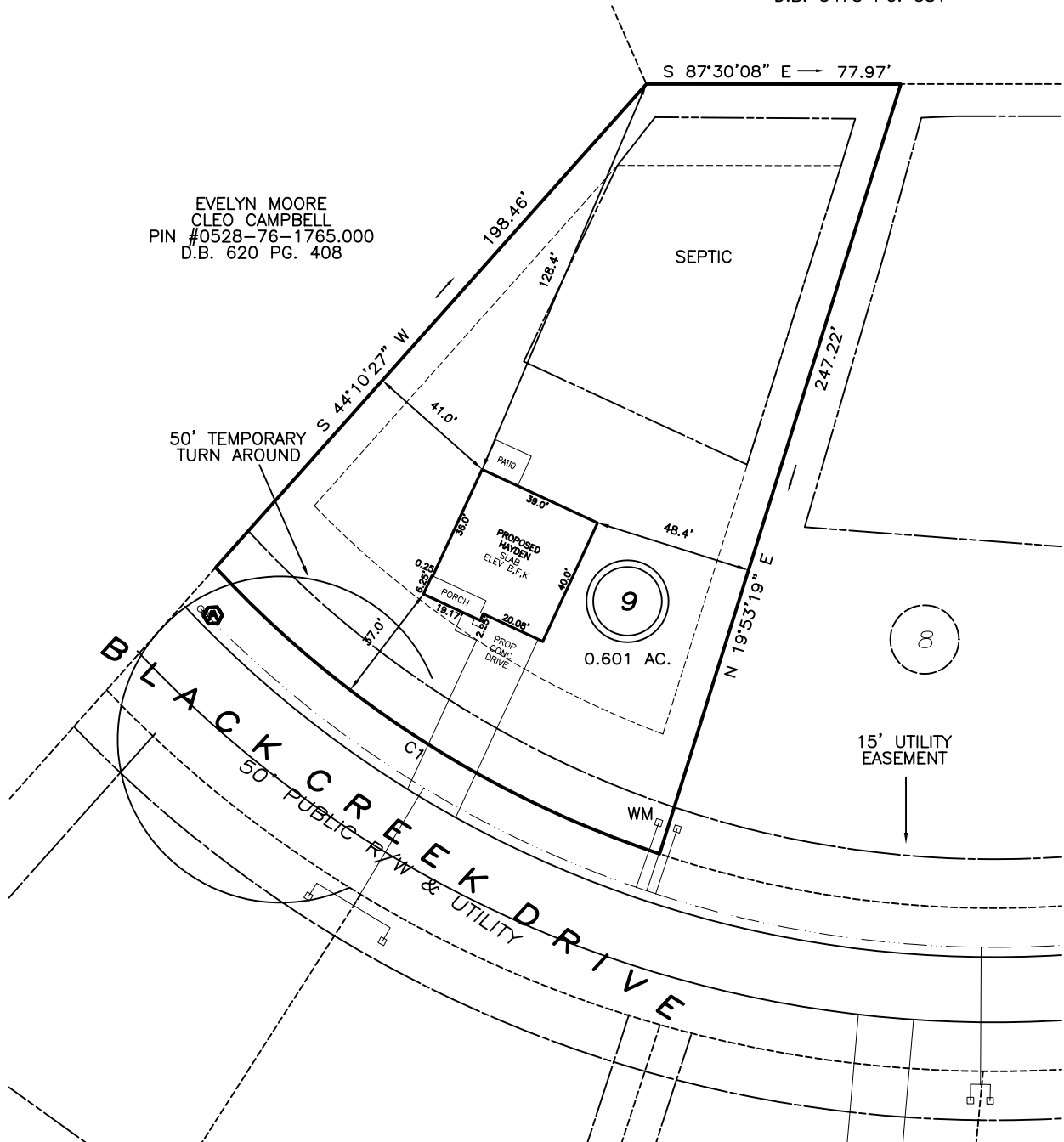
I, MICHAEL P. GRIFFIN, certify that under my direction and supervision this map was drawn from an actual field survey; that the error of closure of the survey as calculated by coordinates is 1: 10,000+; that the area shown hereon was calculated by coordinates.

Witness my hand and seal this day of MONTH 2023.

PIN #0528-65-5623.000
 D.B. 3478 PG. 581
 HARNETT COUNTY, N.C.

KELLY S. BAIN
 PIN #0528-65-5623.000
 D.B. 3478 PG. 581

EVELYN MOORE
 CLEO CAMPBELL
 PIN #0528-76-1765.000
 D.B. 620 PG. 408



SETBACKS

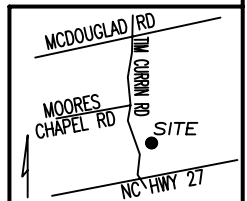
| | |
|-------------|-----|
| FRONT | 35' |
| REAR | 25' |
| SIDE | 10' |
| CORNER SIDE | 20' |

C1 R=325.00' L=163.59' S54°40'59"E 161.87'

PRELIMINARY
 NOT FOR RECORDATION,
 SALES OR CONVEYANCE

LEGEND

| | | | |
|-----|---------------------|-----|--------------------|
| EIP | EXISTING IRON PIPE | FES | FLARED END SECTION |
| IPS | IRON PIPE SET | WM | WATER METER |
| R/W | RIGHT OF WAY | CO | CLEAN OUT |
| N/F | NOW OR FORMERLY | FH | FIRE HYDRANT |
| EIS | EXISTING IRON STAKE | CB | CATCH BASIN |




GRIFFIN LAND SURVEYING, INC.
 P.O. BOX 148
 FUQUAY-VARINA, NC 27526
 (919) - 567 - 1963

PLOT PLAN
 FOR
D.R. HORTON
 MCKAY PLACE
 LOT 9
 BLACK CREEK DRIVE
 LILLINGTON, N.C.
 HARNETT COUNTY UPPER LITTLE RIVER TOWNSHIP

DRAWN BY KDF

DATE 5/12/23

CHECKED BY MPG

SCALE 1" = 50'