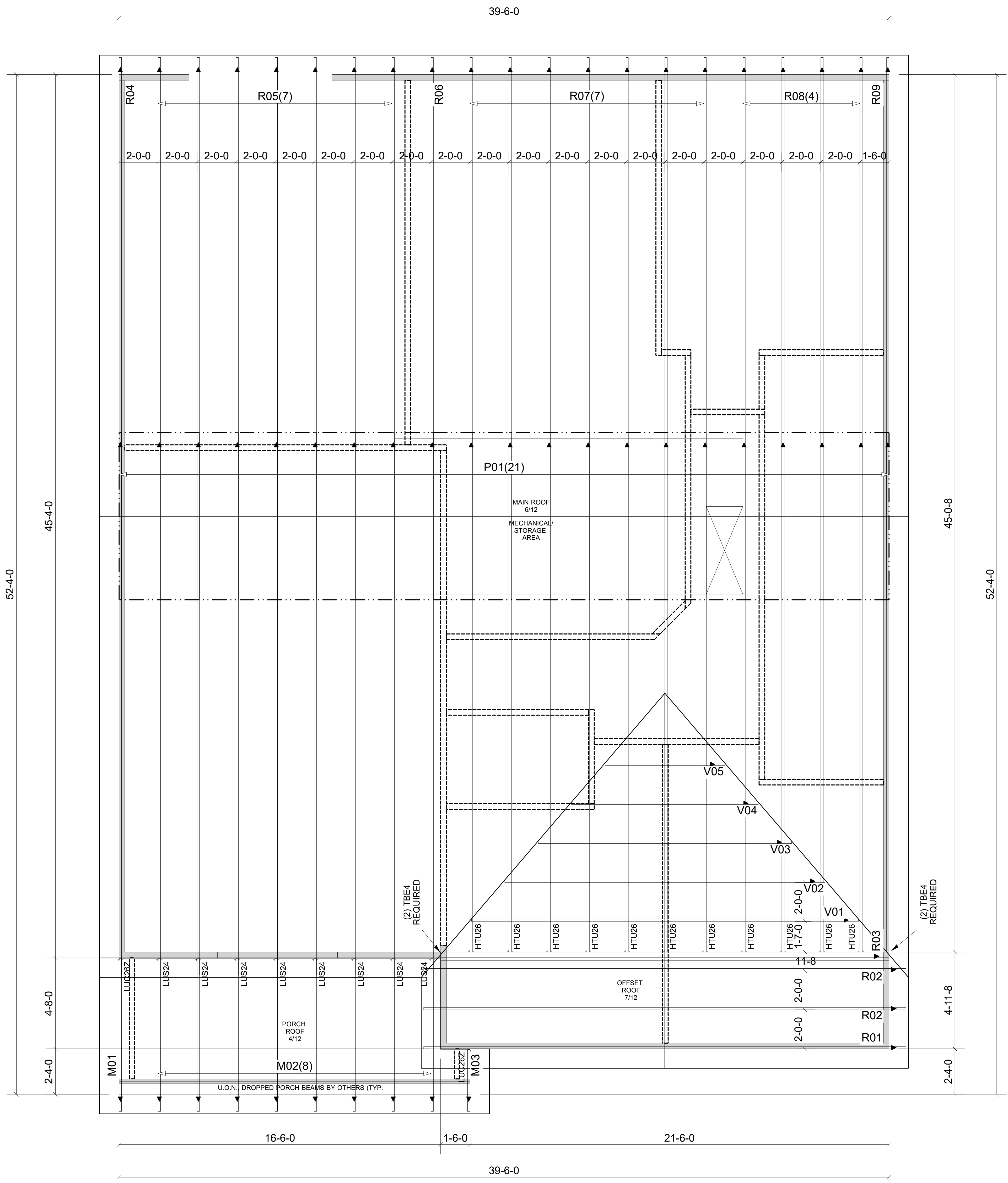


WARNING! Long span trusses, 60' or greater in length, require extreme care and experience for proper and safe handling and installation. For general handling and installation guidance, see the "Guide to Good Practice for Handling, Installing, Restraining & Bracing of Metal Plate Connected Wood Trusses" ("BCS"), JOINTLY PRODUCED BY SBCA and TPI. For project specific guidance, consult with a registered design professional. ATLANTIC assumes no responsibility for the handling, installation or bracing of trusses.



Truss Connector Total List		
Manuf	Product	Qty
Simpson	HTU26	11
Simpson	LUC26Z	2
Simpson	LUS24	8
	TBE4	4

Products				
PlotID	Length	Product	Plies	Net Qty
BM-1	8' 0"	1-3/4" x 9-1/2" VERSA-LAM® 2.0 3100 SP	2	2

▲ = LEFT END OF TRUSS

NOT FOR CONSTRUCTION



Moncks Corner/Easley, SC (800) 475-3999
Sparta, NC (336) 372-2226

REVISIONS:

Client: **MATTAMY HOMES-RALEIGH**
Job: **LOT 38 PROVIDENCE CREEK**
Plan Information:
VOYAGEUR-FH

NOT TO SCALE

Date: 07/07/23

Drawn By:
SBB

Job #: 23-4837-R01
Sales Rep: KYLE GIBSON
Phone:

ROOF