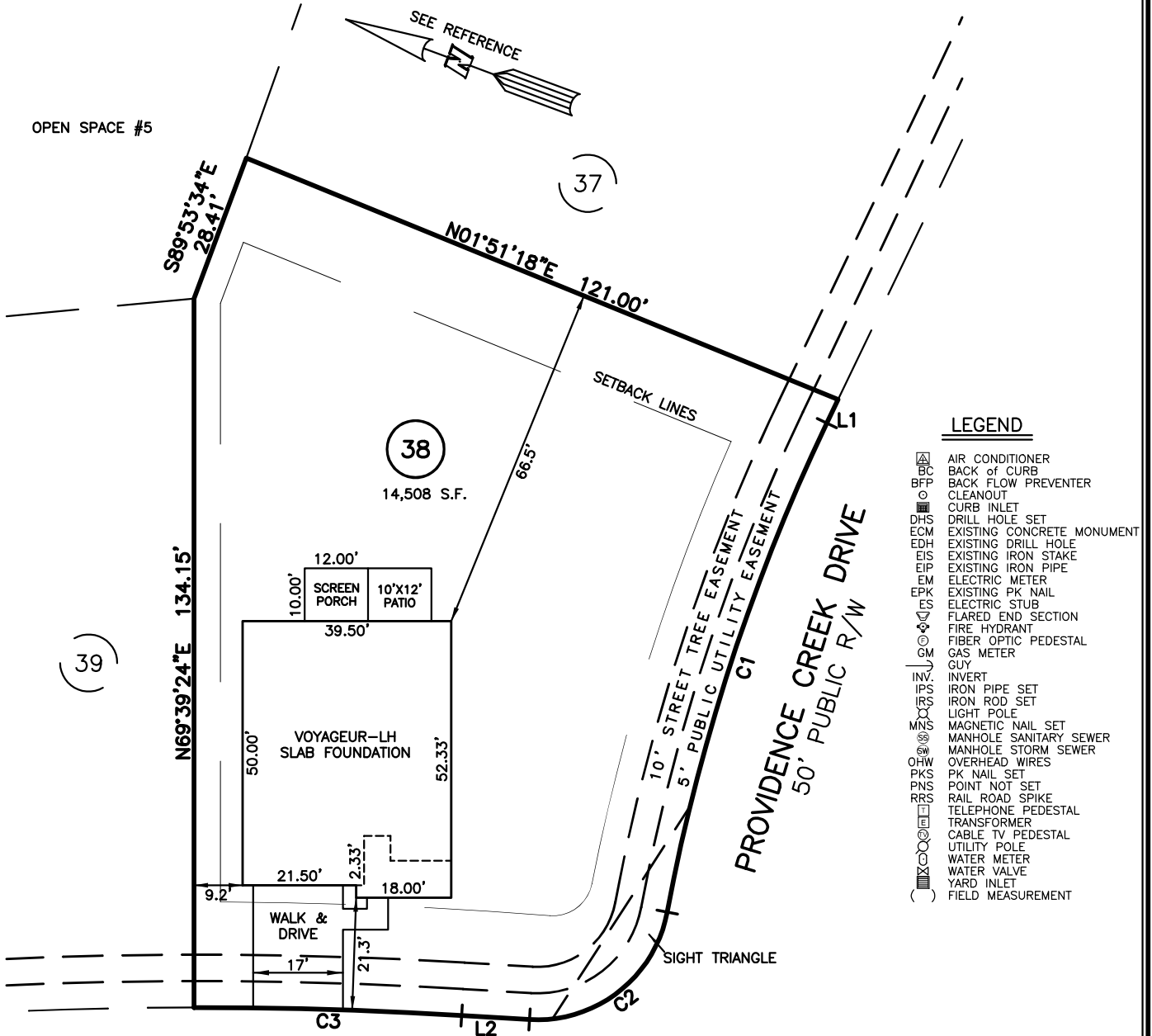


PLOT PLAN FOR  
**MATTAMY HOMES**  
 000 WINDSWEPT WAY  
 LOT 38, PROVIDENCE CREEK PHASE 1  
 HECTORS CREEK AND BLACK RIVER TOWNSHIP, HARNETT COUNTY, NORTH CAROLINA



**LEGEND**

- ◻ AIR CONDITIONER
- BC BACK OF CURB
- BFP BACK FLOW PREVENTER
- CLEANOUT
- ◻ CURB INLET
- DHS DRILL HOLE SET
- ECM EXISTING CONCRETE MONUMENT
- EDH EXISTING DRILL HOLE
- EIS EXISTING IRON STAKE
- EIP EXISTING IRON PIPE
- EM ELECTRIC METER
- EPK EXISTING PK NAIL
- ES ELECTRIC STUB
- ES FLARED END SECTION
- ⊕ FIRE HYDRANT
- ⊕ FIBER OPTIC PEDESTAL
- GM GAS METER
- GUY GUY
- INV. INVERT
- IPS IRON PIPE SET
- IRS IRON ROD SET
- LIGHT POLE
- MNS MAGNETIC NAIL SET
- ⊕ MANHOLE SANITARY SEWER
- ⊕ MANHOLE STORM SEWER
- OHW OVERHEAD WIRES
- PKS PK NAIL SET
- PNS POINT NOT SET
- RRS RAIL ROAD SPIKE
- ⊕ TELEPHONE PEDESTAL
- TRANSFORMER
- ⊕ CABLE TV PEDESTAL
- UTILITY POLE
- WATER METER
- WATER VALVE
- ⊕ YARD INLET
- ( ) FIELD MEASUREMENT

IMPERVIOUS SURFACES	
HOUSE	2,020 S.F.
PORCH	120 S.F.
WALK & DRIVE	440 S.F.
MISC.	120 S.F.
TOTAL	2,700 S.F.
MAX. IMPERVIOUS	4,500 S.F.

LINE	BEARING	DISTANCE
L1	S84°47'52"E	4.97'
L2	N16°53'21"W	12.88'

NUM	RADIUS	ARC	DELTA	CHORD BRG	CHORD
C1	375.00'	97.59'	14°54'38"	N87°44'49"E	97.31'
C2	25.00'	36.14'	82°49'09"	S58°17'55"E	33.07'
C3	825.00'	50.70'	3°31'16"	N18°38'59"W	50.69'

**SETBACK INFO**

- FRONT: \_\_\_\_\_ 20'
- REAR: \_\_\_\_\_ 15'
- SIDES: \_\_\_\_\_ 5'
- CORNER SIDE: \_\_\_\_\_ 15'

**REFERENCES:**

BM 2022 PGS 346-351



SCALE: 1" = 30'

**NOTES**

1. THIS SURVEY SUBJECT TO ANY FACTS THAT MAY BE DISCLOSED BY A FULL AND ACCURATE TITLE SEARCH.
2. THIS MAP MAY NOT BE A CERTIFIED SURVEY AND HAS NOT BEEN REVIEWED BY A LOCAL GOVERNMENT AGENCY FOR COMPLIANCE WITH ANY APPLICABLE LAND DEVELOPMENT REGULATIONS AND HAS NOT BEEN REVIEWED FOR COMPLIANCE WITH RECORDING REQUIREMENTS FOR PLATS.

PLOT PLAN  
 PRELIMINARY PLAT- NOT FOR RECORDATION,  
 CONVEYANCE OR SALES

REV CODE: 1.FLIP, 2.PLAN, 3.ROTATE, 4.MOVE, 5.SS  
 6.SEVERAL OF ABOVE, 7.LAND FEATURE, 8. OTHER

DATE: JULY 10, 2023  
 F.B. \_\_\_\_\_

**RWK, PA**  
**ENGINEERING ~ SURVEYING**  
 CORPORATE LICENSE: C-1771  
 101 W. MAIN ST., SUITE 202  
 GARNER, NC 27529  
 PHONE (919) 779-4854  
 FAX (919) 779-4056