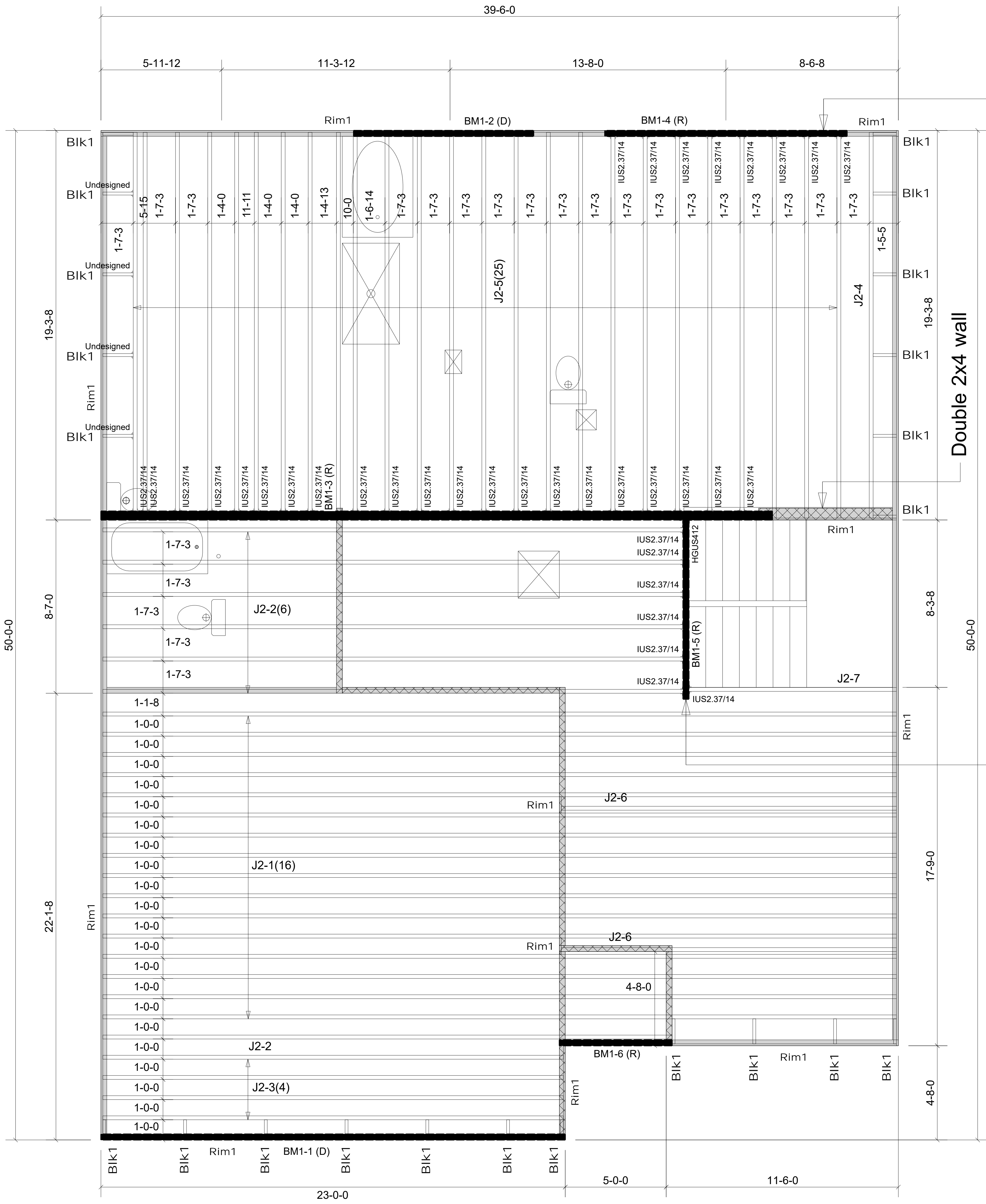


**WARNING!** Long span trusses, 60' or greater in length, require extreme care and experience for proper and safe handling and installation. For general handling and installation guidance, see the "Guide to Good Practice for Handling, Installing, Restraining & Bracing of Metal Plate Connected Wood Trusses" (BCSI™), JOINTLY PRODUCED BY SBCA and TPI. For project specific guidance, consult with a registered design professional. ATLANTIC assumes no responsibility for the handling, installation or bracing of trusses.



Double 2x4 wall

Extend this beam on both ends to accommodate the hangers.

Extend this beam on this end to accommodate the hangers.

Products				
PlotID	Length	Product	Plies	Net Qty
J2-1	40' 0"	14" BCI® 6000s-1.8	1	16
J2-2	29' 0"	14" BCI® 6000s-1.8	1	7
J2-3	23' 0"	14" BCI® 6000s-1.8	1	4
J2-4	20' 0"	14" BCI® 6000s-1.8	1	1
J2-5	19' 0"	14" BCI® 6000s-1.8	1	25
J2-6	17' 0"	14" BCI® 6000s-1.8	1	2
J2-7	11' 0"	14" BCI® 6000s-1.8	1	1
BM1-1 (D)	24' 0"	1-3/4" x 11-7/8" VERSA-LAM® 2.0 3100 SP	2	2
BM1-2 (D)	10' 0"	1-3/4" x 11-7/8" VERSA-LAM® 2.0 3100 SP	2	2
BM1-3 (R)	34' 0"	1-3/4" x 14" VERSA-LAM® 2.0 3100 SP	3	3
BM1-4 (R)	12' 0"	1-3/4" x 14" VERSA-LAM® 2.0 3100 SP	2	2
BM1-5 (R)	10' 0"	1-3/4" x 14" VERSA-LAM® 2.0 3100 SP	2	2
BM1-6 (R)	6' 0"	1-3/4" x 14" VERSA-LAM® 2.0 3100 SP	2	2
Rim1	12' 0"	1-1/8" x 14" BC RIM BOARD OSB	1	15
Blk1	2' 0"	14" BLOCKING	1	22

Connector Summary			
Qty	Manuf	Product	Flange
1	Simpson	HGUS412	None
36	Simpson	IUS2.37/14	None

▲ = LEFT END OF TRUSS

**NOT FOR CONSTRUCTION**



Moncks Corner/Easley, SC (800) 475-3999  
Sparta, NC (336) 372-2226

REVISIONS:

Client: MATTAMY HOMES-RALEIGH

Job: LOT 38 PROVIDENCE CREEK

Plan Information:  
VOYAGEUR-FH

NOT TO SCALE

Date: 07/07/23

Drawn By: SBB

Job #: Sales Rep: KYLE GIBSON  
23-4837-R01 Phone:

ROOF