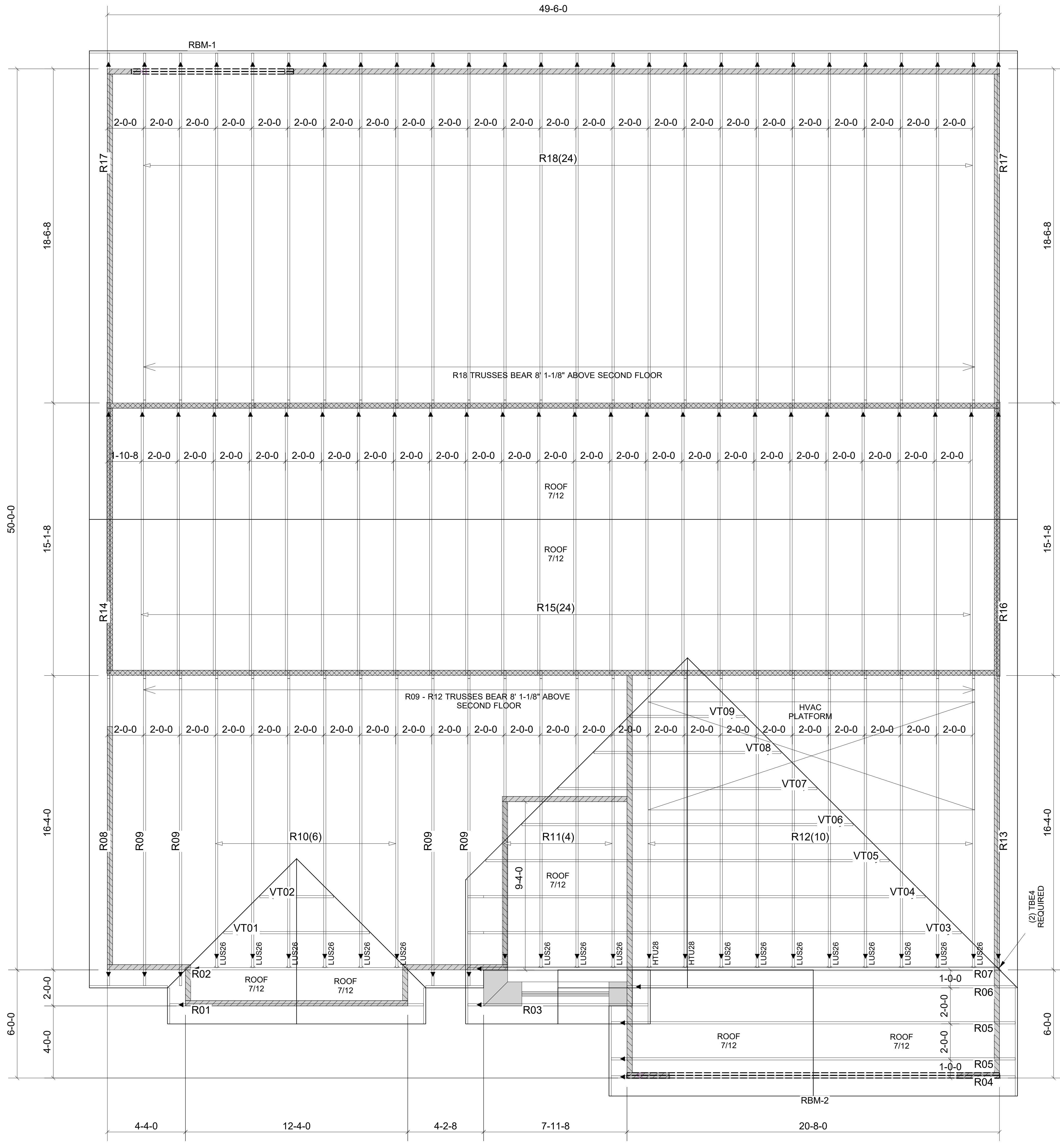


WARNING! Long span trusses, 60' or greater in length, require extreme care and experience for proper and safe handling and installation. For general handling and installation guidance, see the "Guide to Good Practice for Handling, Restraining & Bracing of Metal Plate Connected Wood Trusses (BCS)", JOINTLY PRODUCED BY SBCA and TPI. For project specific guidance, consult with a registered design professional. ATLANTIC assumes no responsibility for the handling, installation or bracing of trusses.



Products				
PlotID	Length	Product	Plies	Net Qty
RBM-1	10-0-0	1-3/4" x 9-1/2" VERSA-LAM@ 2.0 3100 SP	2	2
RBM-2	22-0-0	1-3/4" x 11-7/8" VERSA-LAM@ 2.0 3100 SP	2	2

Truss Connector Total List		
Manuf	Product	Qty
	HTU28	2
	LUS26	17
	TBE4	2

Hatch Legend	
	LOAD BEARING WALLS 9' 1-1/8" ABOVE FIRST FLOOR
	LOAD BEARING WALLS 8' 1-1/8" ABOVE SECOND FLOOR

▲ = LEFT END OF TRUSS

NOT FOR CONSTRUCTION



Moncks Corner/Easley, SC (800) 475-3999
Sparta, NC (336) 372-2226

REVISIONS:

Client:	MATTAMY HOMES-RALEIGH		
Job:	LOT 19 PROVIDENCE CREEK		
Plan Information:	APPALACHIAN-FC		
NOT TO SCALE	Date:	07/07/23	
Drawn By:	SBB	Job #:	23-4836-J02
		Sales Rep:	KYLE GIBSON
		Phone:	

I-JOISTS