

DISK FILE NO. CF FILE NAME "FARMHOUSE-I" APRIL~ 2023

GIRDER AND HEADER SIZES AND JACK STUD REQUIREMENTS ON EXTERIOR AND INTERIOR LOAD BEARING WALLS ARE TO COINCIDE WITH TABLE EXT.~R602.1 (1) AND INT.~R602.1 (2).

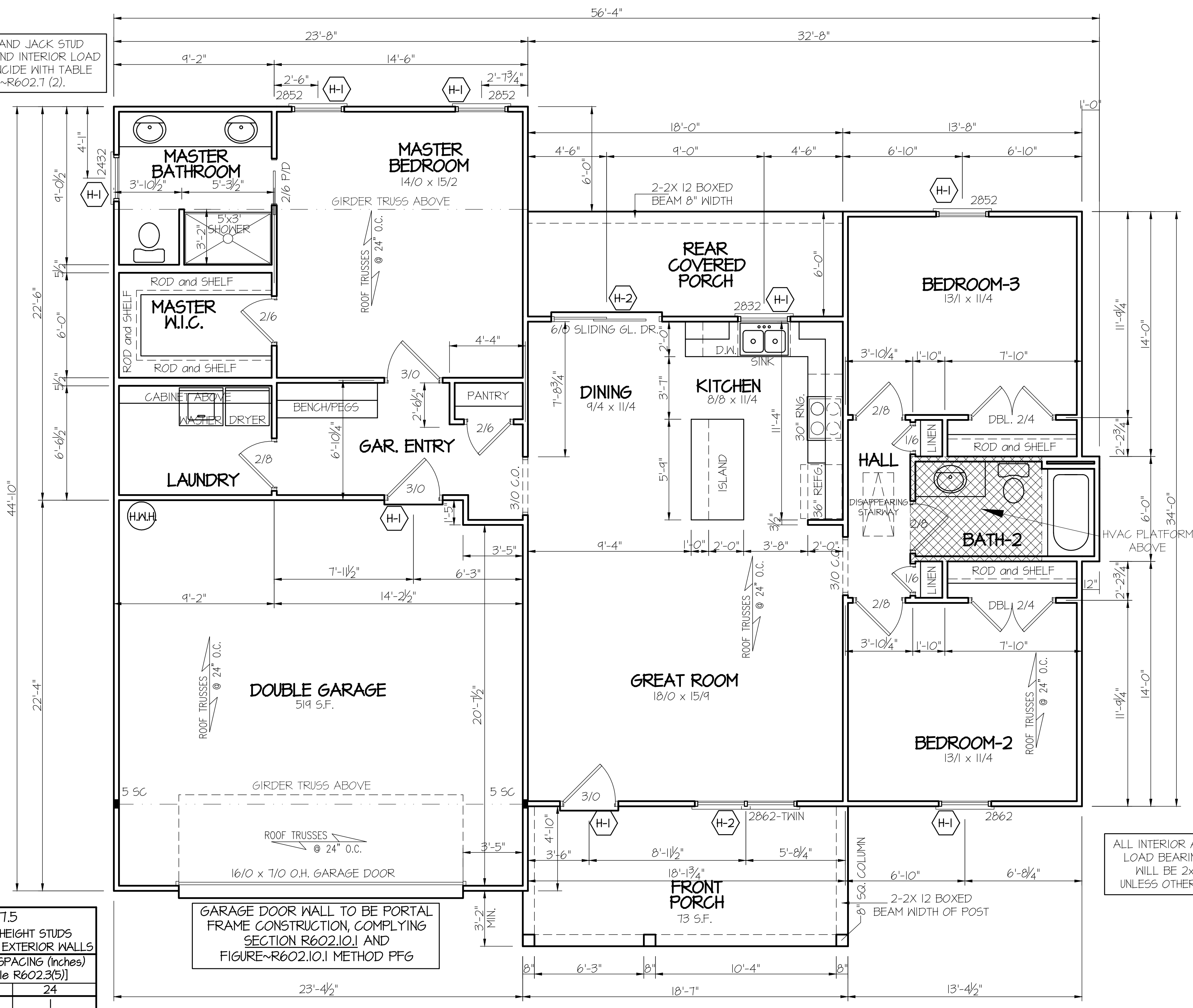


TABLE R602.1.5
MINIMUM NUMBER OF FULL HEIGHT STUDS AT EACH END OF HEADERS IN EXTERIOR WALLS

| HEADER SPAN (feet) | MAX. STUD SPACING (Inches) [per Table R602.3(5)] | |
|--------------------|--|----|
| | 16 | 24 |
| < 3' | 1 | 1 |
| 4' | 2 | 1 |
| 8' | 3 | 2 |
| 12' | 5 | 3 |
| 16' | 6 | 4 |

HEADER SCHEDULE

| SYMBOL # | SIZE | JACKS |
|----------|---------------------|-------|
| H-1 | (2) 2x10 | 1 |
| H-2 | (2) 2x10 | 2 |
| H-3 | (2) 2x8 | 2 |
| H-4 | (2) 2x12 | 2 |
| H-5 | (2) 1.75 x 9.25 LVL | 3 |

SECTION R401-COLUMNS
R401.3 STRUCTURAL REQUIREMENTS:
THE COLUMNS SHALL BE RESTRAINED TO PREVENT LATERAL DISPLACEMENT AT THE TOP AND BOTTOM END. WOOD COLUMNS SHALL BE NOT LESS IN NOMINAL SIZE THAN 4 INCHES BY 4 INCHES (102 mm BY 102 mm). STEEL COLUMNS SHALL BE NOT LESS THAN 3-INCH-DIAMETER (76 mm) SCHEDULE 40 PIPE MANUFACTURED IN ACCORDANCE WITH ASTM A53 GRADE B OR APPROVED EQUIVALENT.

WIND ZONES (PER TABLE R301.2(4))

| COUNTY | MPH |
|----------|-----|
| HARNETT | 120 |
| JOHNSTON | 120 |
| SAMPSON | 130 |
| WAKE | 115 |

FLOOR-FRAME HEATED S.F. = 1517 s.f.
DOUBLE GARAGE = 519 s.f.
FRONT PORCH = 73 s.f.
REAR PORCH = 108 s.f.

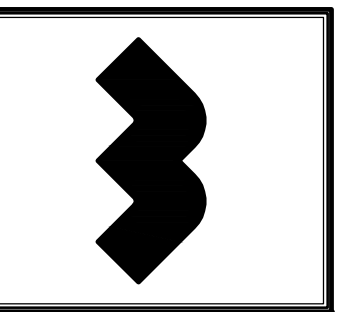
9' CEILINGS (UNLESS OTHERWISE NOTED)
FIRST FLOOR PLAN
SCALE: 1/4" = 1'-0"

GARAGE DOOR WALL TO BE PORTAL FRAME CONSTRUCTION, COMPLYING SECTION R602.10.1 AND FIGURE~R602.10.1 METHOD PFG

ALL INTERIOR AND EXTERIOR LOAD BEARING HEADERS WILL BE 2x10 #2 SFP UNLESS OTHERWISE NOTED.

DATE:
MAY 1, 2023

WELLONS HOMES
P.O. BOX 730
DUNN, N.C. - 28335
O: (910) 892-3123 FAX: (910) 892-5032
© 2023, WELLONS HOMES



PLAN:
FARMHOUSE~II
(GARAGE LEFT)

SHEET NO.
2