

DISK FILE NO. CF FILE NAME "FARMHOUSE-1" APRIL~ 2023

GIRDER AND HEADER SIZES AND JACK STUD REQUIREMENTS ON EXTERIOR AND INTERIOR LOAD BEARING WALLS ARE TO COINCIDE WITH TABLE EXT.~R602.1 (1) AND INT.~R602.1 (2).

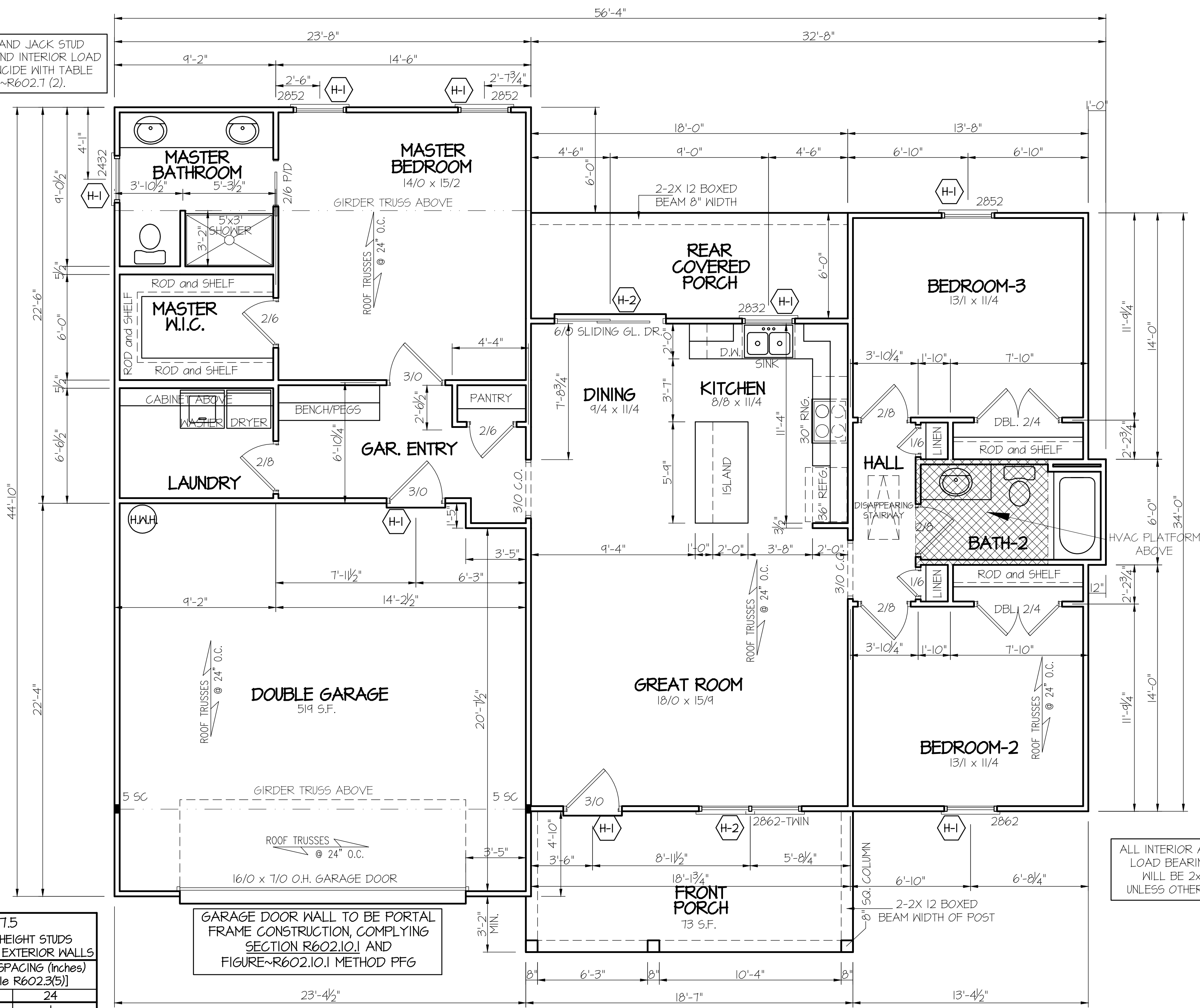


TABLE R602.1.5
MINIMUM NUMBER OF FULL HEIGHT STUDS AT EACH END OF HEADERS IN EXTERIOR WALLS

HEADER SPAN (feet)	MAX. STUD SPACING (Inches) [per Table R602.3(5)]	
	16	24
< 3'	1	1
4'	2	1
8'	3	2
12'	5	3
16'	6	4

GARAGE DOOR WALL TO BE PORTAL FRAME CONSTRUCTION, COMPLYING SECTION R602.10.1 AND FIGURE~R602.10.1 METHOD PFG

HEADER SCHEDULE

SYMBOL #	SIZE	JACKS
H-1	(2) 2x10	1
H-2	(2) 2x10	2
H-3	(2) 2x8	2
H-4	(2) 2x12	2
H-5	(2) 1.75 x 9.25 LVL	3

SECTION R401-COLUMNS
R401.3 STRUCTURAL REQUIREMENTS:
THE COLUMNS SHALL BE RESTRAINED TO PREVENT LATERAL DISPLACEMENT AT THE TOP AND BOTTOM END. WOOD COLUMNS SHALL BE NOT LESS IN NOMINAL SIZE THAN 4 INCHES BY 4 INCHES (102 mm BY 102 mm). STEEL COLUMNS SHALL BE NOT LESS THAN 3-INCH-DIAMETER (76 mm) SCHEDULE 40 PIPE MANUFACTURED IN ACCORDANCE WITH ASTM A53 GRADE B OR APPROVED EQUIVALENT.

WIND ZONES (PER TABLE R301.2(4))

COUNTY	MPH
HARNETT	120
JOHNSTON	120
SAMPSON	130
WAKE	115

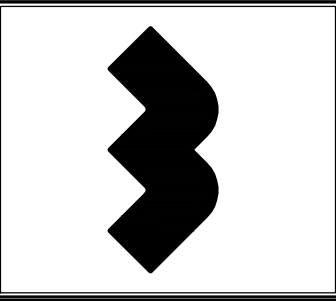
FLOOR-FRAME HEATED S.F. = 1517 s.f.
DOUBLE GARAGE = 519 s.f.
FRONT PORCH = 73 s.f.
REAR PORCH = 108 s.f.

9' CEILINGS (UNLESS OTHERWISE NOTED)
FIRST FLOOR PLAN
SCALE: 1/4" = 1'-0"

ALL INTERIOR AND EXTERIOR LOAD BEARING HEADERS WILL BE 2x10 #2 SFP UNLESS OTHERWISE NOTED.

DATE:
MAY 1, 2023

WELLONS HOMES
P.O. BOX 730
DUNN, N.C. - 28335
O: (910) 892-3123 FAX: (910) 892-5032
© 2023, WELLONS HOMES



FARMHOUSE~II
(GARAGE LEFT)

PLAN:
SHEET NO.
2