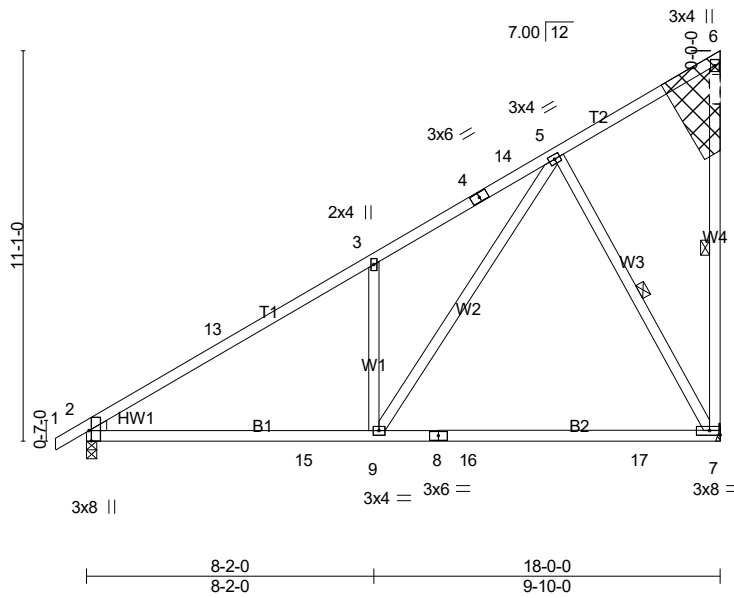
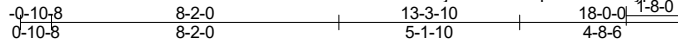


Job 23-4637-R01	Truss R19RP2	Truss Type MONOPITCH	Qty 9	Ply 1	LOT 0.0046 HONEYCUTT HILLS 92 SHELBY MEADOW LANE ANGIER, NC
Atlantic Building Components, Moncks Corner, South Carolina					Job Reference (optional)

8.430 s Feb 12 2021 MiTek Industries, Inc. Fri Oct 13 11:09:24 2023 Page 1
 ID:ki1jooABIVPuapOCTCcJLLyp?N7-68HZ8jMY70txhDryop7rmx1szGk00CFgTExlByTsNP



Scale = 1:65.5

REPAIR(S) REQUIRED

Plate Offsets (X,Y)-- [2:0-3-8,Edge]

LOADING (psf)	SPACING-	CSI.	DEFL.	PLATES	GRIP
TCLL (roof) 20.0	2-0-0	TC 0.86	in (loc) l/defl L/d	MT20	244/190
Snow (Pf) 20.0	Plate Grip DOL 1.15	BC 0.62	Vert(LL) -0.49 7-9 >440 240		
TCDL 10.0	Lumber DOL 1.15	WB 0.39	Vert(CT) -0.67 7-9 >321 180		
BCLL 0.0 *	Rep Stress Incr YES	Matrix-AS	Horz(CT) 0.02 2 n/a n/a		
BCDL 10.0	Code IRC2021/TPI2014			Weight: 110 lb	FT = 20%

LUMBER-
 TOP CHORD 2x4 SP No.2
 BOT CHORD 2x4 SP SS
 WEBS 2x4 SP No.3
 WEDGE
 Left: 2x4 SP No.3

BRACING-
 TOP CHORD Structural wood sheathing directly applied, except end verticals.
 BOT CHORD Rigid ceiling directly applied.
 WEBS 1 Row at midpt 6-7, 5-7

MiTek recommends that Stabilizers and required cross bracing be installed during truss erection, in accordance with Stabilizer Installation guide.

REACTIONS. (lb/size) 2=767/0-3-8 (min. 0-1-8), 7=713/Mechanical
 Max Horz 2=331(LC 14)
 Max Uplift 2=-11(LC 14), 7=-191(LC 14)
 Max Grav 2=835(LC 24), 7=935(LC 5)

FORCES. (lb) - Max. Comp./Max. Ten. - All forces 250 (lb) or less except when shown.
 TOP CHORD 2-13=-1097/0, 3-13=-1004/0, 3-4=-1118/72, 4-14=-1000/94, 5-14=-987/96
 BOT CHORD 2-15=-190/932, 9-15=-190/932, 8-9=-96/367, 8-16=-96/367, 16-17=-96/367,
 7-17=-96/367
 WEBS 3-9=-427/226, 5-9=-173/1044, 5-7=-716/202

NOTES- (13)

- 1) Repair Condition: top chord has damaged section 0-10-0 long starting 0-4-0 below joint 6.
- 2) Attach 30"H X 26"W X 7/16" OSB (APA Rated Sheathing 24/16 Exposure 1) gusset to both sides of truss at joint 6 with 10d (0.131"x3") nails from each face, driven through both sheets of plywood and clinched. Connected together as follows: 2x4 - 1 rows 0-6-0 o.c. Minimum 0-3-0 end distance.
- 3) Repairs specified by this program will be subject to review and change.
- 4) Wind: ASCE 7-16; Vult=120mph (3-second gust) Vasd=95mph; TCDL=5.0psf; BCDL=5.0psf; h=23ft; Cat. II; Exp B; Enclosed; MWFRS (envelope) gable end zone and C-C Exterior(2E) -0-10-6 to 3-11-3, Interior(1) 3-11-3 to 13-0-10, Exterior(2E) 13-0-10 to 17-10-4 zone; cantilever left and right exposed; end vertical left exposed; C-C for members and forces & MWFRS for reactions shown; Lumber DOL=1.60 plate grip DOL=1.60
- 5) TCLL: ASCE 7-16; Pr=20.0 psf (roof LL: Lum DOL=1.15 Plate DOL=1.15); Pf=20.0 psf (Lum DOL=1.15 Plate DOL=1.15); Is=1.0; Rough Cat B; Partially Exp.; Ce=1.0; Cs=1.00; Ct=1.10
- 6) Unbalanced snow loads have been considered for this design.
- 7) This truss has been designed for greater of min roof live load of 12.0 psf or 2.00 times flat roof load of 20.0 psf on overhangs non-concurrent with other live loads.
- 8) This truss has been designed for a 10.0 psf bottom chord live load nonconcurrent with any other live loads.
- 9) * This truss has been designed for a live load of 30.0psf on the bottom chord in all areas where a rectangle 3-6-0 tall by 1-0-0 wide will fit between the bottom chord and any other members, with BCDL = 10.0psf.
- 10) Refer to girder(s) for truss to truss connections.
- 11) Provide mechanical connection (by others) of truss to bearing plate capable of withstanding 11 lb uplift at joint 2 and 191 lb uplift at joint 7.

Continued on page 2

Job	Truss	Truss Type	Qty	Ply	LOT 0.0046 HONEYCUTT HILLS 92 SHELBY MEADOW LANE ANGIER, NC
23-4637-R01	R19RP2	MONOPITCH	9	1	Job Reference (optional)

Atlantic Building Components, Moncks Corner, South Carolina

8.430 s Feb 12 2021 MiTek Industries, Inc. Fri Oct 13 11:09:24 2023 Page 2
ID:ki1jooABIVPuapOCTCcJLLyp?N7-68HZ8jMY70txhDryop7rmx11szGk00CFgTElByTsNP

NOTES- (13)

12) This truss design requires that a minimum of 7/16" structural wood sheathing be applied directly to the top chord and 1/2" gypsum sheetrock be applied directly to the bottom chord.

LOAD CASE(S) Standard