

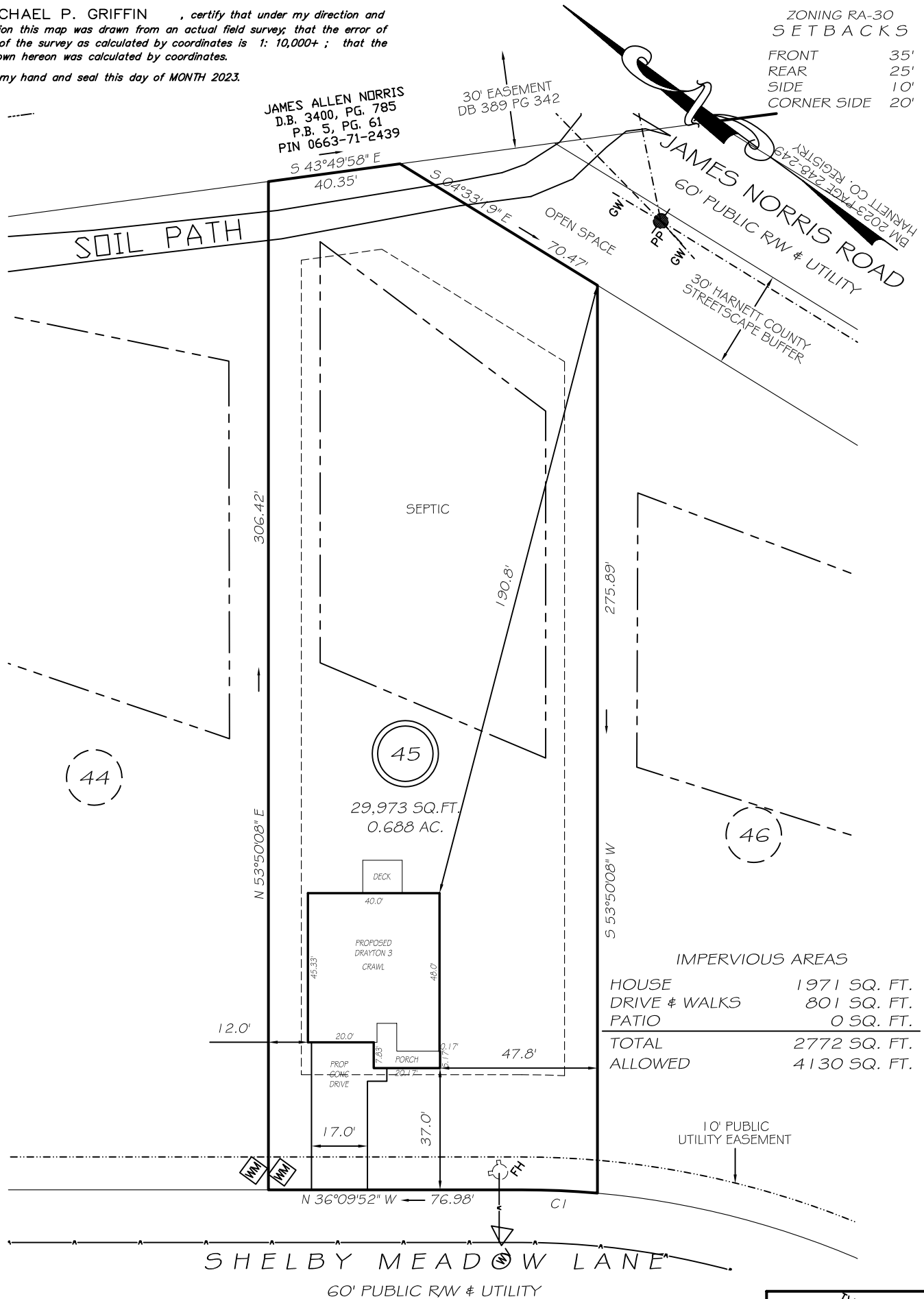
I, MICHAEL P. GRIFFIN, certify that under my direction and supervision this map was drawn from an actual field survey; that the error of closure of the survey as calculated by coordinates is 1: 10,000+; that the area shown hereon was calculated by coordinates.

Witness my hand and seal this day of MONTH 2023.

JAMES ALLEN NORRIS  
D.B. 3400, PG. 785  
P.B. 5, PG. 61  
PIN 0663-71-2439

ZONING RA-30  
SETBACKS

FRONT 35'  
REAR 25'  
SIDE 10'  
CORNER SIDE 20'



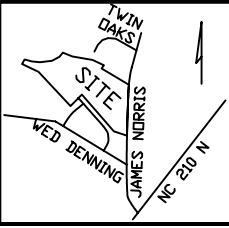
IMPERVIOUS AREAS

HOUSE	1971 SQ. FT.
DRIVE & WALKS	801 SQ. FT.
PATIO	0 SQ. FT.
<b>TOTAL</b>	<b>2772 SQ. FT.</b>
<b>ALLOWED</b>	<b>4130 SQ. FT.</b>

CI R=260.00' L=23.05' N33°37'30"W 23.04'

LEGEND

EIP	EXISTING IRON PIPE	FES	FLARED END SECTION
IPS	IRON PIPE SET	WM	WATER METER
RAW	RIGHT OF WAY	CO	CLEAN OUT
N/F	NOW OR FORMERLY	FH	FIRE HYDRANT
EIS	EXISTING IRON STAKE	CB	CATCH BASIN



**PRELIMINARY**  
NOT FOR RECORDATION,  
SALES OR CONVEYANCE



**GRIFFIN LAND SURVEYING, INC.**

P.O. BOX 148  
FUQUAY-VARINA, NC 27526  
(919) - 567-1963

PLOT PLAN  
FOR  
**DRB HOMES**

HONEYCUTT HILLS

LOT 45

114 SHELBY MEADOW LANE

ANGIER, N.C.

HARNETT COUNTY BLACK RIVER TOWNSHIP

DRAWN BY **KDF**

DATE **6/28/23**

CHECKED BY **MPG**

SCALE **1" = 40'**