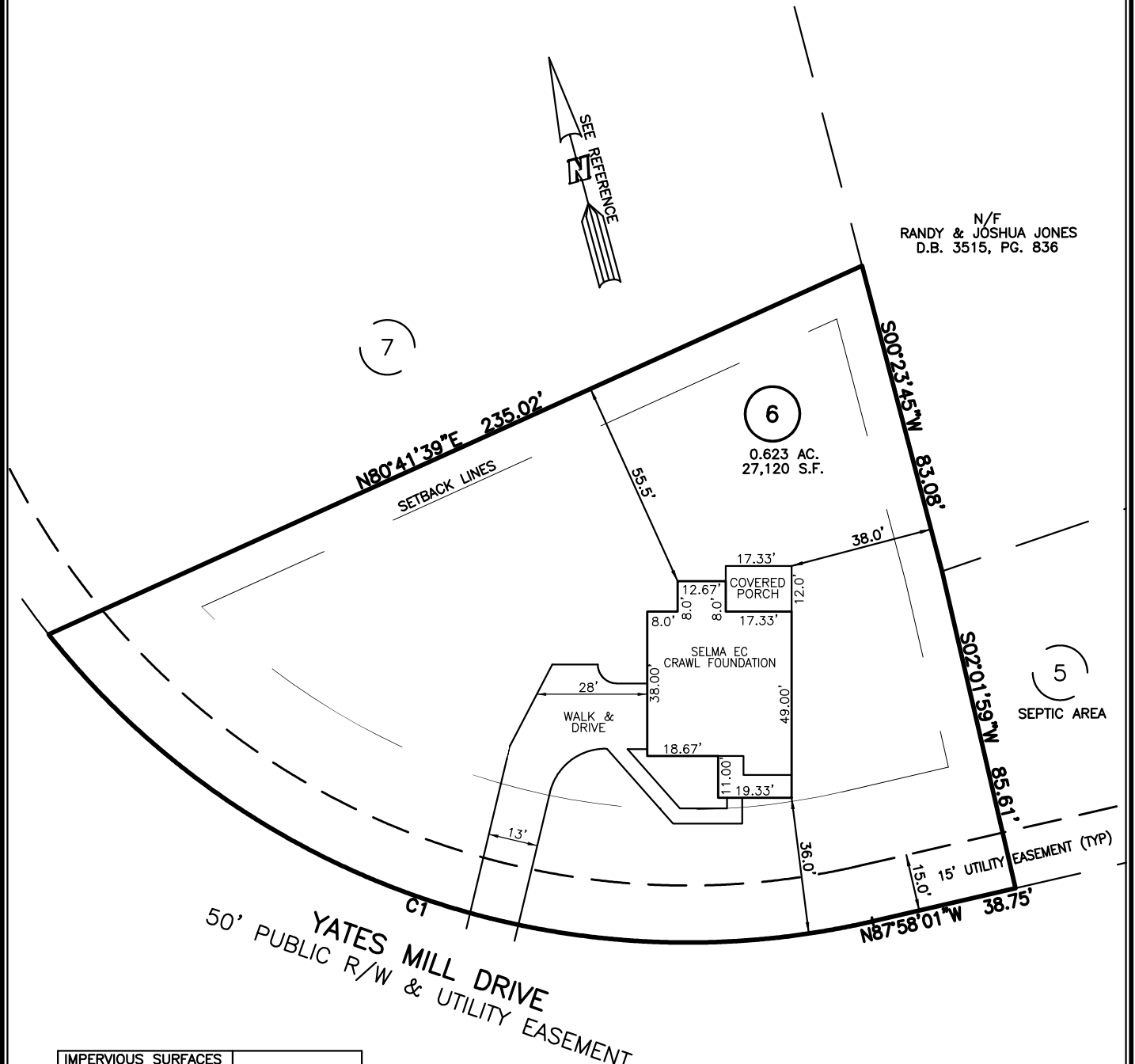


PLOT PLAN FOR
NEW HOME INC., LLC
 240 YATES MILL DRIVE
 LOT 6, WOODBRIDGE SOUTH
 BUCKHORN TOWNSHIP, HARNETT COUNTY, NORTH CAROLINA

N/F
 RANDY & JOSHUA JONES
 D.B. 3515, PG. 836



IMPERVIOUS SURFACES	
HOUSE	1,760 S.F.
WALK & DRIVE	1,470 S.F.
PORCH	210 S.F.
TOTAL	3,440 S.F.

CURVE	RADIUS	ARC LENGTH	CHORD LENGTH	CHORD BEARING	DELTA ANGLE
C1	215.00'	242.20'	229.59'	S55°44'05" E	64°32'38"

LEGEND

- | | |
|---|--|
| <ul style="list-style-type: none"> ⊠ AIR CONDITIONER BC BACK of CURB BFP BACK FLOW PREVENTER ○ CLEANOUT ⊠ CURB INLET DHS DRILL HOLE SET EDM EXISTING CONCRETE MONUMENT EDH EXISTING DRILL HOLE EIS EXISTING IRON STAKE EIP EXISTING IRON PIPE EM ELECTRIC METER EPK EXISTING PK NAIL ES ELECTRIC STUB ⊠ FLARED END SECTION ⊠ FIRE HYDRANT ⊠ FIBER OPTIC PEDESTAL GM GAS METER → GUY | <ul style="list-style-type: none"> INV. INVERT IPS IRON PIPE SET IRS IRON ROD SET ○ LIGHT POLE MNS MAGNETIC NAIL SET ⊠ MANHOLE SANITARY SEWER ⊠ MANHOLE STORM SEWER OHW OVERHEAD WIRES PKS PK NAIL SET PNS POINT NOT SET RRS RAIL ROAD SPIKE ⊠ TELEPHONE PEDESTAL ⊠ TRANSFORMER ⊠ CABLE TV PEDESTAL ⊠ UTILITY POLE ⊠ WATER METER ⊠ WATER VALVE ⊠ YARD INLET () FIELD MEASUREMENT |
|---|--|

REFERENCES:
 P.B. 2023, PGS 92-94

SETBACK INFO
 FRONT: _____ 35'
 REAR: _____ 25'
 SIDES: _____ 10'
 CORNER SIDE: _____ 20'



NOTES

SCALE: 1" = 40'

- THIS SURVEY SUBJECT TO ANY FACTS THAT MAY BE DISCLOSED BY A FULL AND ACCURATE TITLE SEARCH.
- THIS MAP MAY NOT BE A CERTIFIED SURVEY AND HAS NOT BEEN REVIEWED BY A LOCAL GOVERNMENT AGENCY FOR COMPLIANCE WITH ANY APPLICABLE LAND DEVELOPMENT REGULATIONS AND HAS NOT BEEN REVIEWED FOR COMPLIANCE WITH RECORDING REQUIREMENTS FOR PLATS.

PLOT PLAN
 PRELIMINARY PLAT- NOT FOR RECORDATION,
 CONVEYANCE OR SALES

REV CODE: 1.FLIP, 2.PLAN, 3.ROTATE, 4.MOVE, 5.SS
 6.SEVERAL OF ABOVE, 7.LAND FEATURE, 8. OTHER

REV1: JULY 11, 2023(8)
 DATE: JULY 5, 2023

F.B. _____

RWK, PA
ENGINEERING ~ SURVEYING
 CORPORATE LICENSE: C-1771
 101 W. MAIN ST., SUITE 202
 GARNER, NC 27529
 PHONE (919) 779-4854
 FAX (919) 779-4056