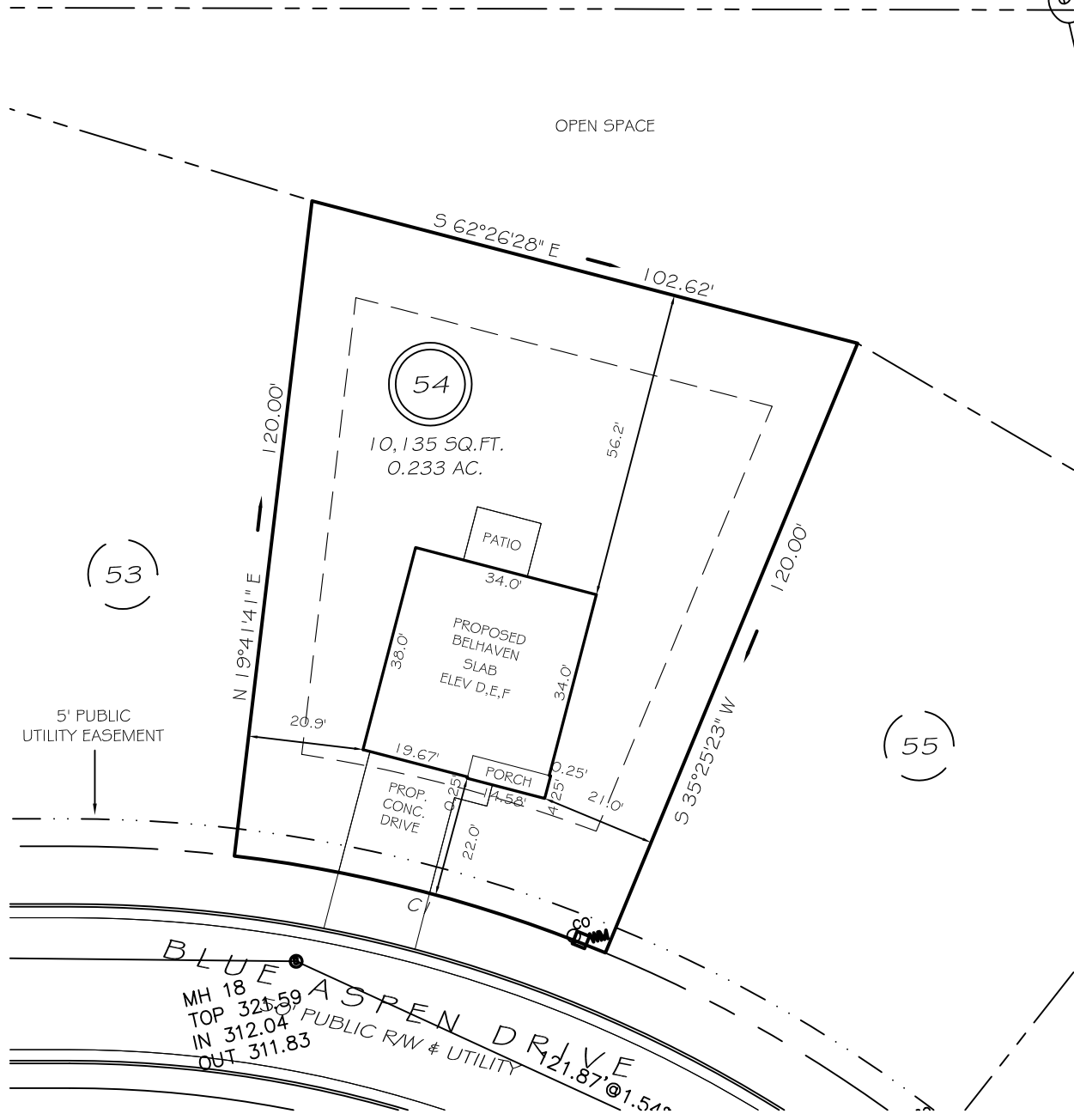
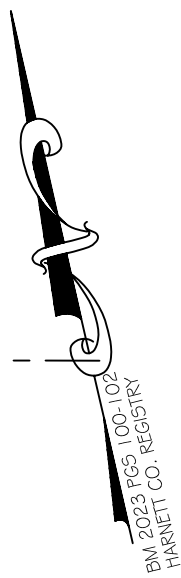


I, MICHAEL P. GRIFFIN, certify that under my direction and supervision this map was drawn from an actual field survey; that the error of closure of the survey as calculated by coordinates is 1: 10,000+; that the area shown hereon was calculated by coordinates.

Witness my hand and seal this day of MONTH 2023.

B. G. RAMBEAU &
C/O JAMES RAMBEAU
D.B. 242, PG. 448
PIN 0654-70-2102



IMPERVIOUS AREAS	
HOUSE	1297 SQ. FT.
DRIVE & WALKS	405 SQ. FT.
PATIO	120 SQ. FT.
TOTAL	1822 SQ. FT.
ALLOWED	3000 SQ. FT.

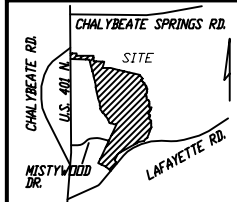
SETBACKS	
FRONT	20'
REAR	15'
SIDE	10'
CORNER SIDE	15'

CI R=255.00' L=70.00' N62°26'28"W 69.78'

P R E L I M I N A R Y
NOT FOR RECORDATION,
SALES OR CONVEYANCE

LEGEND

- EIP EXISTING IRON PIPE
- IPS IRON PIPE SET
- R/W RIGHT OF WAY
- N/F NOW OR FORMERLY
- EIS EXISTING IRON STAKE
- MH MANHOLE
- WM WATER METER
- CO CLEAN OUT
- FH FIRE HYDRANT
- CB CATCH BASIN



GRIFFIN LAND SURVEYING, INC.
P. O. BOX 148
FUQUAY-VARINA, NC 27526
(919) - 567-1963

PLOT PLAN
FOR
D. R. HORTON
WOODGROVE
LOT 54
BLUE ASPEN DRIVE
NORTH CAROLINA
HARNETT CO. HECTOR'S CREEK TWSHP

DRAWN BY KDF

DATE 6/15/23

CHECKED BY MPG

SCALE 1" = 30'