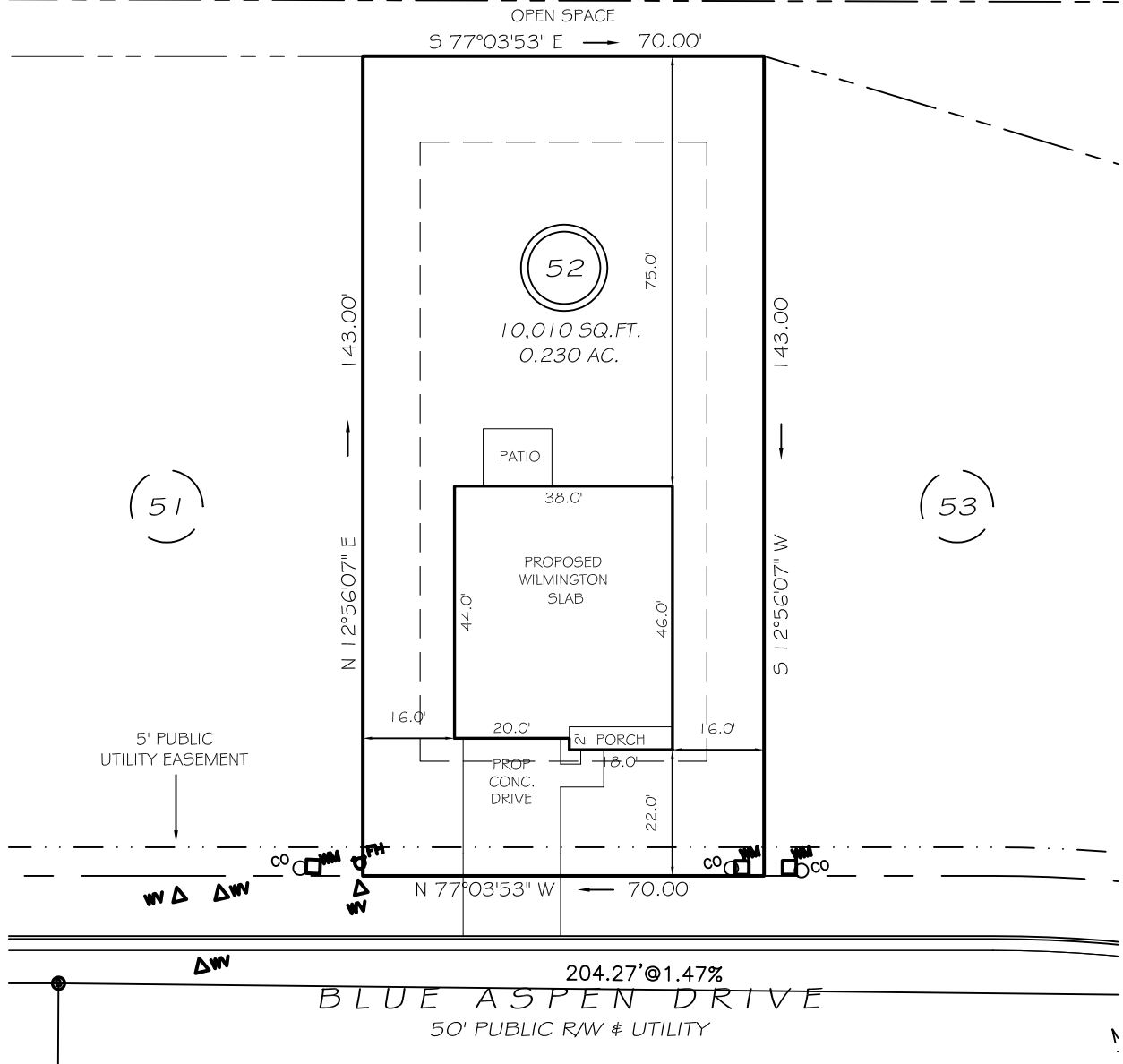
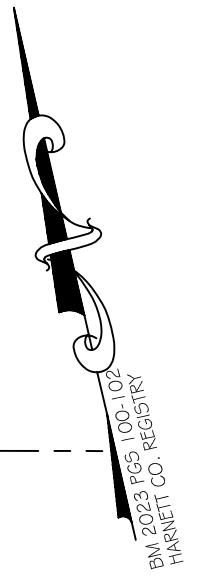


I, MICHAEL P. GRIFFIN, certify that under my direction and supervision this map was drawn from an actual field survey; that the error of closure of the survey as calculated by coordinates is 1: 10,000+; that the area shown hereon was calculated by coordinates.

Witness my hand and seal this day of MONTH 2023.

B. G. RAMBEAU #  
C/O JAMES RAMBEAU  
D.B. 242, PG. 448  
PIN 0654-70-2102



IMPERVIOUS AREAS

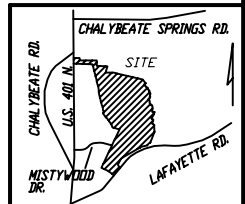
HOUSE	1 708 SQ. FT.
DRIVE & WALKS	448 SQ. FT.
PATIO	120 SQ. FT.
<b>TOTAL</b>	<b>2276 SQ. FT.</b>
ALLOWED	3000 SQ. FT.

SETBACKS

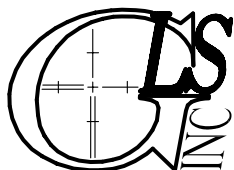
FRONT	20'
REAR	15'
SIDE	10'
CORNER SIDE	15'

LEGEND

EIP	EXISTING IRON PIPE	MH	MANHOLE
IPS	IRON PIPE SET	WM	WATER METER
R/W	RIGHT OF WAY	CO	CLEAN OUT
N/F	NOW OR FORMERLY	FH	FIRE HYDRANT
EIS	EXISTING IRON STAKE	CB	CATCH BASIN



**PRELIMINARY**  
NOT FOR RECORDATION,  
SALES OR CONVEYANCE



**GRIFFIN LAND SURVEYING, INC.**

P. O. BOX 148  
FUQUAY-VARINA, NC 27526  
(919) - 567 - 1963

**PLOT PLAN**  
FOR

**D. R. HORTON**

**WOODGROVE**

**LOT 52**

BLUE ASPEN DRIVE

NORTH CAROLINA

HARNETT CO. HECTOR'S CREEK TWSHP

DRAWN BY KDF

DATE 6/15/23

CHECKED BY MPG

SCALE 1" = 30'