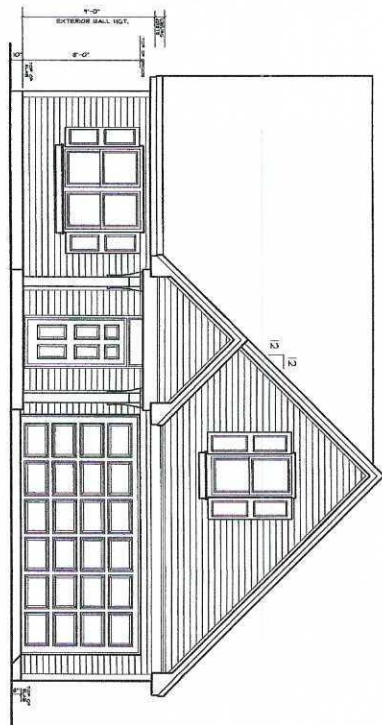


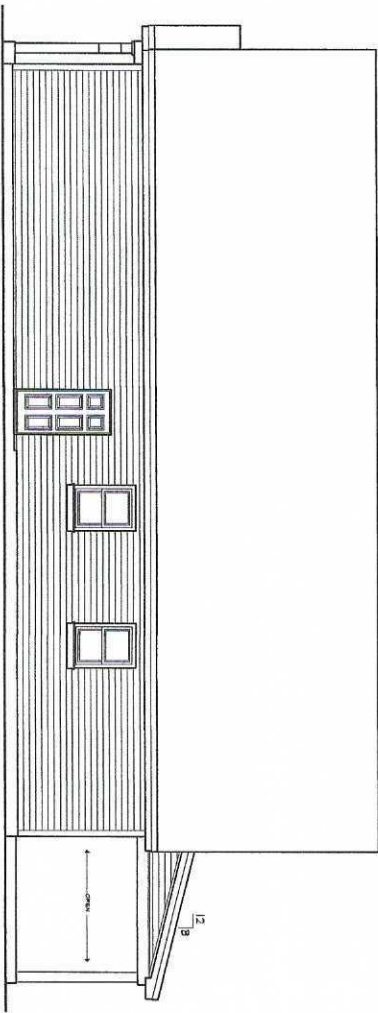
LEFT SIDE ELEVATION

SCALE: 1/4"=1'-0"



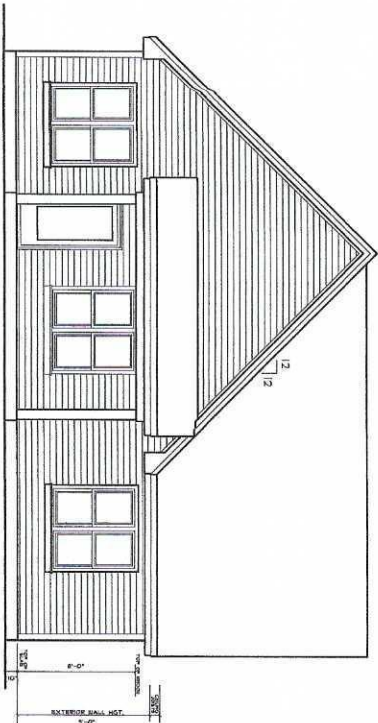
FRONT ELEVATION

SCALE: 1/4"=1'-0"



RIGHT SIDE ELEVATION

SCALE: 1/4"=1'-0"



REAR ELEVATION

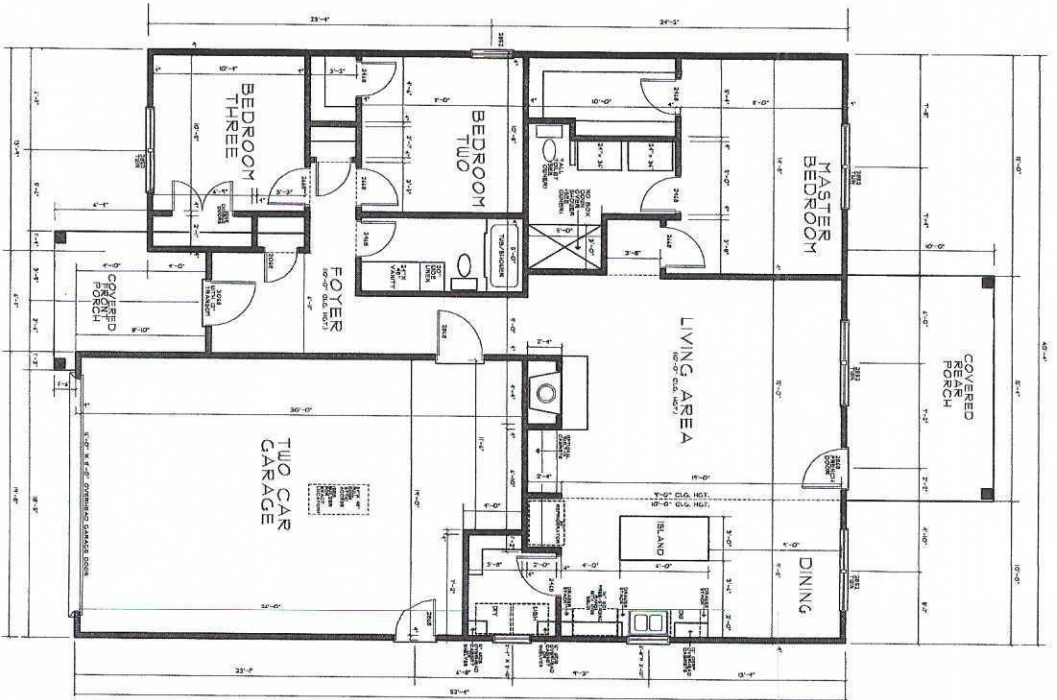
SCALE: 1/4"=1'-0"

BENNETT KEASLER, LLC.  
RESIDENTIAL DESIGN  
RALEIGH, NORTH CAROLINA

LOT 3  
Hwy 21  
Reno, NC  
28675

03-28-23  
1

13301 NE Highway 27 W

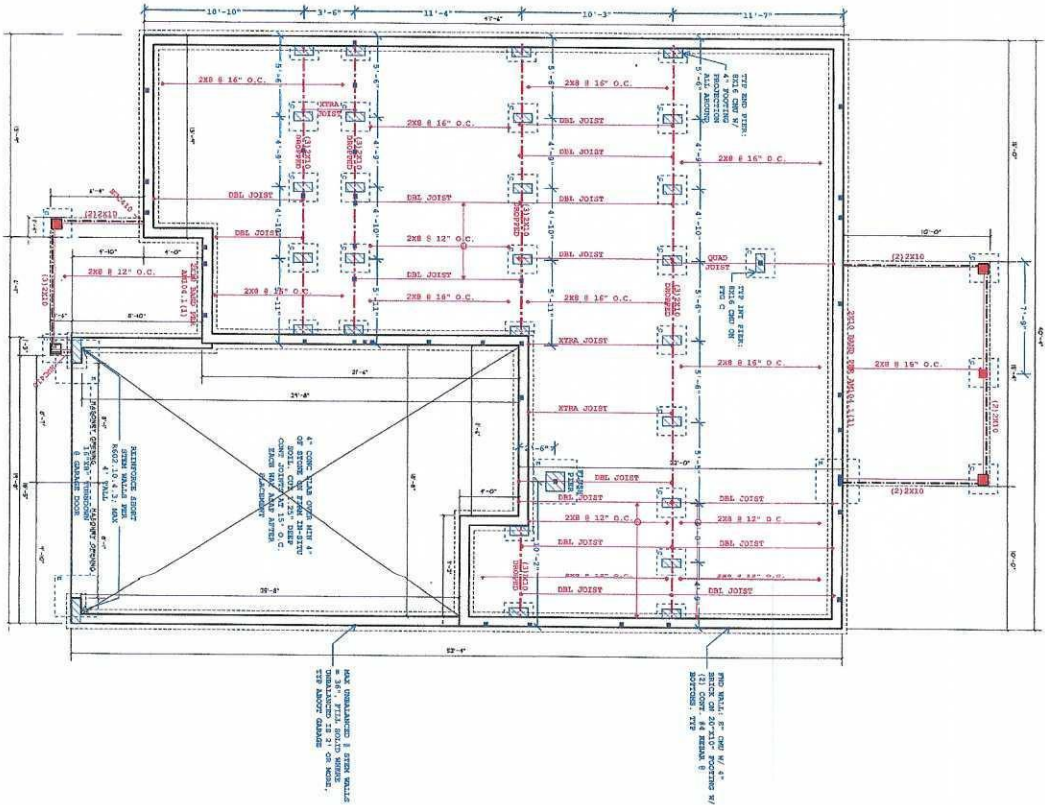


FLOOR PLAN  
 192 SQ. FT. GARAGE AND PORCHES

BENNETT KEASLER, LLC.  
 RESIDENTIAL DESIGN  
 RALEIGH, NORTH CAROLINA

LOT 3  
 MAP 21  
 10/20/2011

03/20/13  
 2



FOUNDATION PLAN-CRAWL  
SCALE: 1/4"=1'-0"

CODE REFERENCE: NCRC 2019;  
ALL WORK TO CONFORM, SEE  
STRUCTURAL NOTES PAGE FOR  
ADDITIONAL INFORMATION

Job Number:  
0547-23

Job Number:  
0547-23

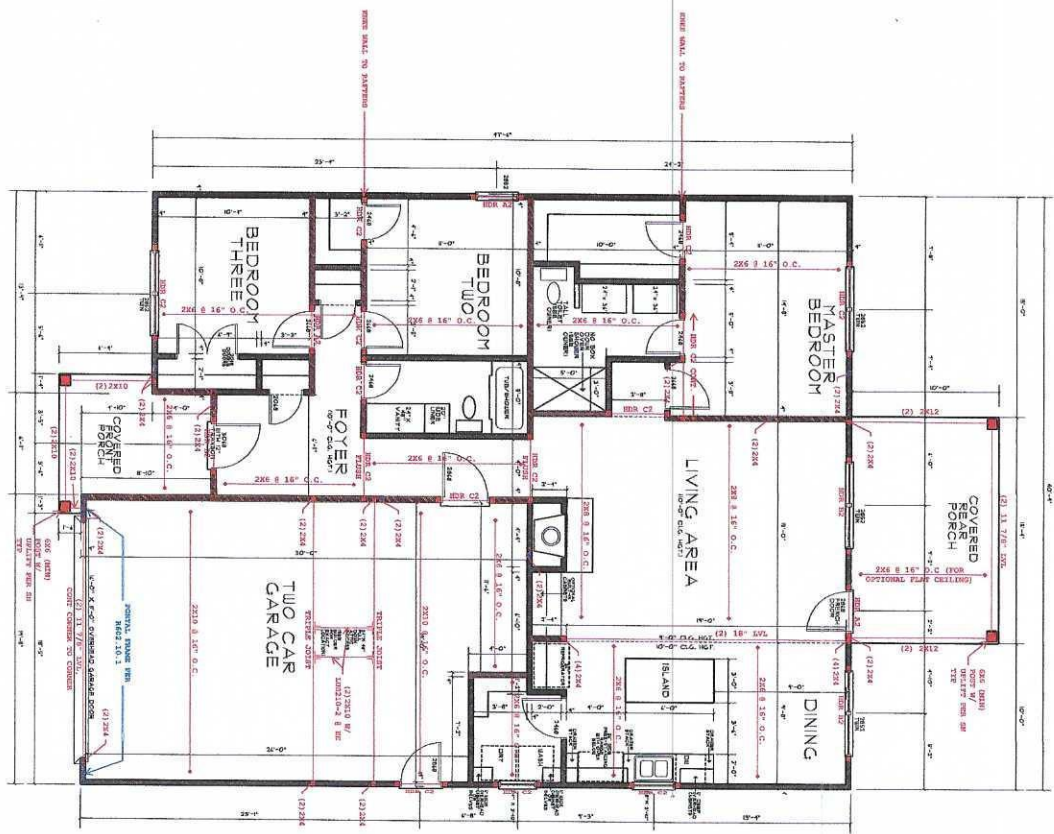
New Construction  
Lot 3 HWY 27  
Broadway, NC  
Keasler Design

PE SEAL  
APPLIES TO  
STRUCTURAL  
NOTES ONLY

A. A. Takla Engineering, PLLC  
718 Arnette Ave. Durham, NC 27701  
NC Firm License # P-1446

Consulting.  
Design.  
Efficiency.





**FLOOR PLAN**  
 1424 SQ.FT.-HEATED  
 192 SQ.FT.- GARAGE AND PORCHES

**Member Schedule:**  
 A = 2x6 w/ (1) 2x6 @ 16" O.C.  
 B = 2x6 w/ (1) 2x6 @ 16" O.C.  
 C = 2x12 w/ (1) 2x6 @ 16" O.C.  
 D = 3-1/2" x 12" LVL @ 16" O.C.  
 E = 3-1/2" x 12" LVL @ 16" O.C.  
 F = 11-7/8" LVL @ 16" O.C.  
 Number following letter refers to number of plys of header. (E/C) = (2)X(2).

Each stud should be same thickness of studs in wall.  
**King stud Schedule (R622.7-3):**  
 1 = 2x6 w/ (1) 2x6 @ 16" O.C.  
 2 = 2x6 w/ (1) 2x6 @ 16" O.C.  
 3 = 2x6 w/ (1) 2x6 @ 16" O.C.  
 4 = 2x6 w/ (1) 2x6 @ 16" O.C.  
 5 = 2x6 w/ (1) 2x6 @ 16" O.C.  
 6 = 2x6 w/ (1) 2x6 @ 16" O.C.  
 7 = 2x6 w/ (1) 2x6 @ 16" O.C.  
 8 = 2x6 w/ (1) 2x6 @ 16" O.C.  
 9 = 2x6 w/ (1) 2x6 @ 16" O.C.  
 10 = 2x6 w/ (1) 2x6 @ 16" O.C.  
 11 = 2x6 w/ (1) 2x6 @ 16" O.C.  
 12 = 2x6 w/ (1) 2x6 @ 16" O.C.  
 13 = 2x6 w/ (1) 2x6 @ 16" O.C.  
 14 = 2x6 w/ (1) 2x6 @ 16" O.C.  
 15 = 2x6 w/ (1) 2x6 @ 16" O.C.  
 16 = 2x6 w/ (1) 2x6 @ 16" O.C.  
 17 = 2x6 w/ (1) 2x6 @ 16" O.C.  
 18 = 2x6 w/ (1) 2x6 @ 16" O.C.  
 19 = 2x6 w/ (1) 2x6 @ 16" O.C.  
 20 = 2x6 w/ (1) 2x6 @ 16" O.C.  
 21 = 2x6 w/ (1) 2x6 @ 16" O.C.  
 22 = 2x6 w/ (1) 2x6 @ 16" O.C.  
 23 = 2x6 w/ (1) 2x6 @ 16" O.C.  
 24 = 2x6 w/ (1) 2x6 @ 16" O.C.  
 25 = 2x6 w/ (1) 2x6 @ 16" O.C.  
 26 = 2x6 w/ (1) 2x6 @ 16" O.C.  
 27 = 2x6 w/ (1) 2x6 @ 16" O.C.  
 28 = 2x6 w/ (1) 2x6 @ 16" O.C.  
 29 = 2x6 w/ (1) 2x6 @ 16" O.C.  
 30 = 2x6 w/ (1) 2x6 @ 16" O.C.  
 31 = 2x6 w/ (1) 2x6 @ 16" O.C.  
 32 = 2x6 w/ (1) 2x6 @ 16" O.C.  
 33 = 2x6 w/ (1) 2x6 @ 16" O.C.  
 34 = 2x6 w/ (1) 2x6 @ 16" O.C.  
 35 = 2x6 w/ (1) 2x6 @ 16" O.C.  
 36 = 2x6 w/ (1) 2x6 @ 16" O.C.  
 37 = 2x6 w/ (1) 2x6 @ 16" O.C.  
 38 = 2x6 w/ (1) 2x6 @ 16" O.C.  
 39 = 2x6 w/ (1) 2x6 @ 16" O.C.  
 40 = 2x6 w/ (1) 2x6 @ 16" O.C.  
 41 = 2x6 w/ (1) 2x6 @ 16" O.C.  
 42 = 2x6 w/ (1) 2x6 @ 16" O.C.  
 43 = 2x6 w/ (1) 2x6 @ 16" O.C.  
 44 = 2x6 w/ (1) 2x6 @ 16" O.C.  
 45 = 2x6 w/ (1) 2x6 @ 16" O.C.  
 46 = 2x6 w/ (1) 2x6 @ 16" O.C.  
 47 = 2x6 w/ (1) 2x6 @ 16" O.C.  
 48 = 2x6 w/ (1) 2x6 @ 16" O.C.  
 49 = 2x6 w/ (1) 2x6 @ 16" O.C.  
 50 = 2x6 w/ (1) 2x6 @ 16" O.C.  
 51 = 2x6 w/ (1) 2x6 @ 16" O.C.  
 52 = 2x6 w/ (1) 2x6 @ 16" O.C.  
 53 = 2x6 w/ (1) 2x6 @ 16" O.C.  
 54 = 2x6 w/ (1) 2x6 @ 16" O.C.  
 55 = 2x6 w/ (1) 2x6 @ 16" O.C.  
 56 = 2x6 w/ (1) 2x6 @ 16" O.C.  
 57 = 2x6 w/ (1) 2x6 @ 16" O.C.  
 58 = 2x6 w/ (1) 2x6 @ 16" O.C.  
 59 = 2x6 w/ (1) 2x6 @ 16" O.C.  
 60 = 2x6 w/ (1) 2x6 @ 16" O.C.  
 61 = 2x6 w/ (1) 2x6 @ 16" O.C.  
 62 = 2x6 w/ (1) 2x6 @ 16" O.C.  
 63 = 2x6 w/ (1) 2x6 @ 16" O.C.  
 64 = 2x6 w/ (1) 2x6 @ 16" O.C.  
 65 = 2x6 w/ (1) 2x6 @ 16" O.C.  
 66 = 2x6 w/ (1) 2x6 @ 16" O.C.  
 67 = 2x6 w/ (1) 2x6 @ 16" O.C.  
 68 = 2x6 w/ (1) 2x6 @ 16" O.C.  
 69 = 2x6 w/ (1) 2x6 @ 16" O.C.  
 70 = 2x6 w/ (1) 2x6 @ 16" O.C.  
 71 = 2x6 w/ (1) 2x6 @ 16" O.C.  
 72 = 2x6 w/ (1) 2x6 @ 16" O.C.  
 73 = 2x6 w/ (1) 2x6 @ 16" O.C.  
 74 = 2x6 w/ (1) 2x6 @ 16" O.C.  
 75 = 2x6 w/ (1) 2x6 @ 16" O.C.  
 76 = 2x6 w/ (1) 2x6 @ 16" O.C.  
 77 = 2x6 w/ (1) 2x6 @ 16" O.C.  
 78 = 2x6 w/ (1) 2x6 @ 16" O.C.  
 79 = 2x6 w/ (1) 2x6 @ 16" O.C.  
 80 = 2x6 w/ (1) 2x6 @ 16" O.C.  
 81 = 2x6 w/ (1) 2x6 @ 16" O.C.  
 82 = 2x6 w/ (1) 2x6 @ 16" O.C.  
 83 = 2x6 w/ (1) 2x6 @ 16" O.C.  
 84 = 2x6 w/ (1) 2x6 @ 16" O.C.  
 85 = 2x6 w/ (1) 2x6 @ 16" O.C.  
 86 = 2x6 w/ (1) 2x6 @ 16" O.C.  
 87 = 2x6 w/ (1) 2x6 @ 16" O.C.  
 88 = 2x6 w/ (1) 2x6 @ 16" O.C.  
 89 = 2x6 w/ (1) 2x6 @ 16" O.C.  
 90 = 2x6 w/ (1) 2x6 @ 16" O.C.  
 91 = 2x6 w/ (1) 2x6 @ 16" O.C.  
 92 = 2x6 w/ (1) 2x6 @ 16" O.C.  
 93 = 2x6 w/ (1) 2x6 @ 16" O.C.  
 94 = 2x6 w/ (1) 2x6 @ 16" O.C.  
 95 = 2x6 w/ (1) 2x6 @ 16" O.C.  
 96 = 2x6 w/ (1) 2x6 @ 16" O.C.  
 97 = 2x6 w/ (1) 2x6 @ 16" O.C.  
 98 = 2x6 w/ (1) 2x6 @ 16" O.C.  
 99 = 2x6 w/ (1) 2x6 @ 16" O.C.  
 100 = 2x6 w/ (1) 2x6 @ 16" O.C.

CODE REFERENCE: NOSC 2019  
 ALL WORK TO CONFORM. SEE  
 STRUCTURAL NOTES PAGE FOR  
 ADDITIONAL INFORMATION

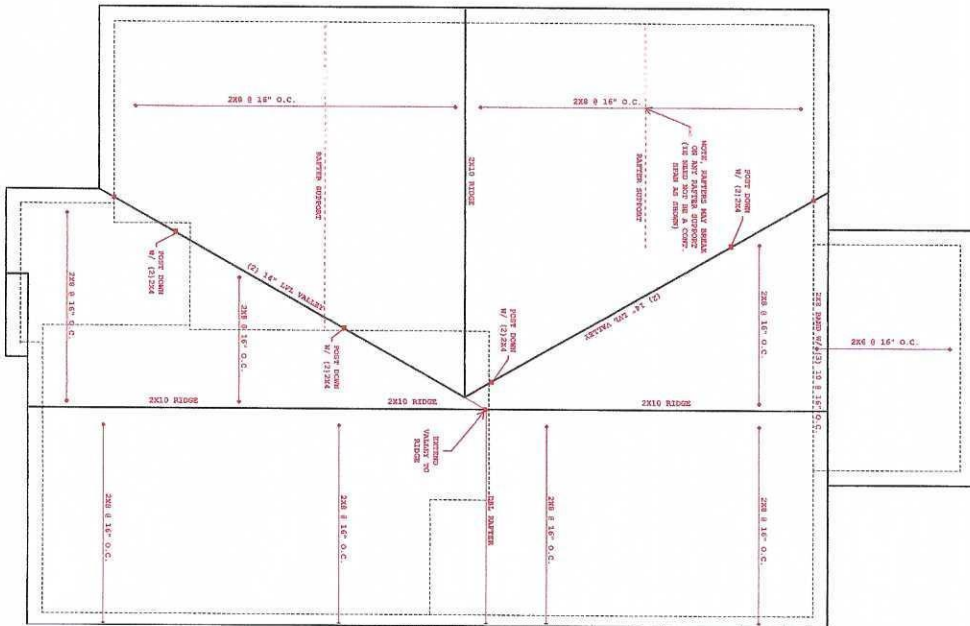
Job Number:  
 0547-23

New Construction  
 Lot 3 HWY 27  
 Broadway, NC  
 Keasler Design

PE SEAL  
 APPLIES TO  
 STRUCTURAL  
 NOTES ONLY

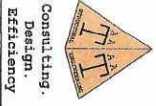
**A. A. Takla Engineering, PLLC**  
 718 Arnette Ave. Durham, NC 27701  
 NC Firm License # P-1446

Consulting.  
 Design.  
 Efficiency.



**ROOF PLAN**  
SCALE: 1/4"=1'-0"

CODE REFERENCE: NCEC 2018  
ALL WORK TO CONFORM, SEE  
STRUCTURAL NOTES PAGE FOR  
ADDITIONAL INFORMATION



Consulting.  
Design.  
Efficiency

**A. A. Takla Engineering, PLLC**  
718 Arnette Ave. Durham, NC 27701  
NC Firm License # P-1446

Andy A. Takla, PE  
REGISTERED PROFESSIONAL ENGINEER  
NO. 123456789  
11-20-2022

PE SEAL  
APPLIES TO  
STRUCTURAL  
NOTES ONLY

New Construction  
Lot 3 HWY 27  
Broadway, NC  
Keasler Design

Job Number:  
0547-23

S3



