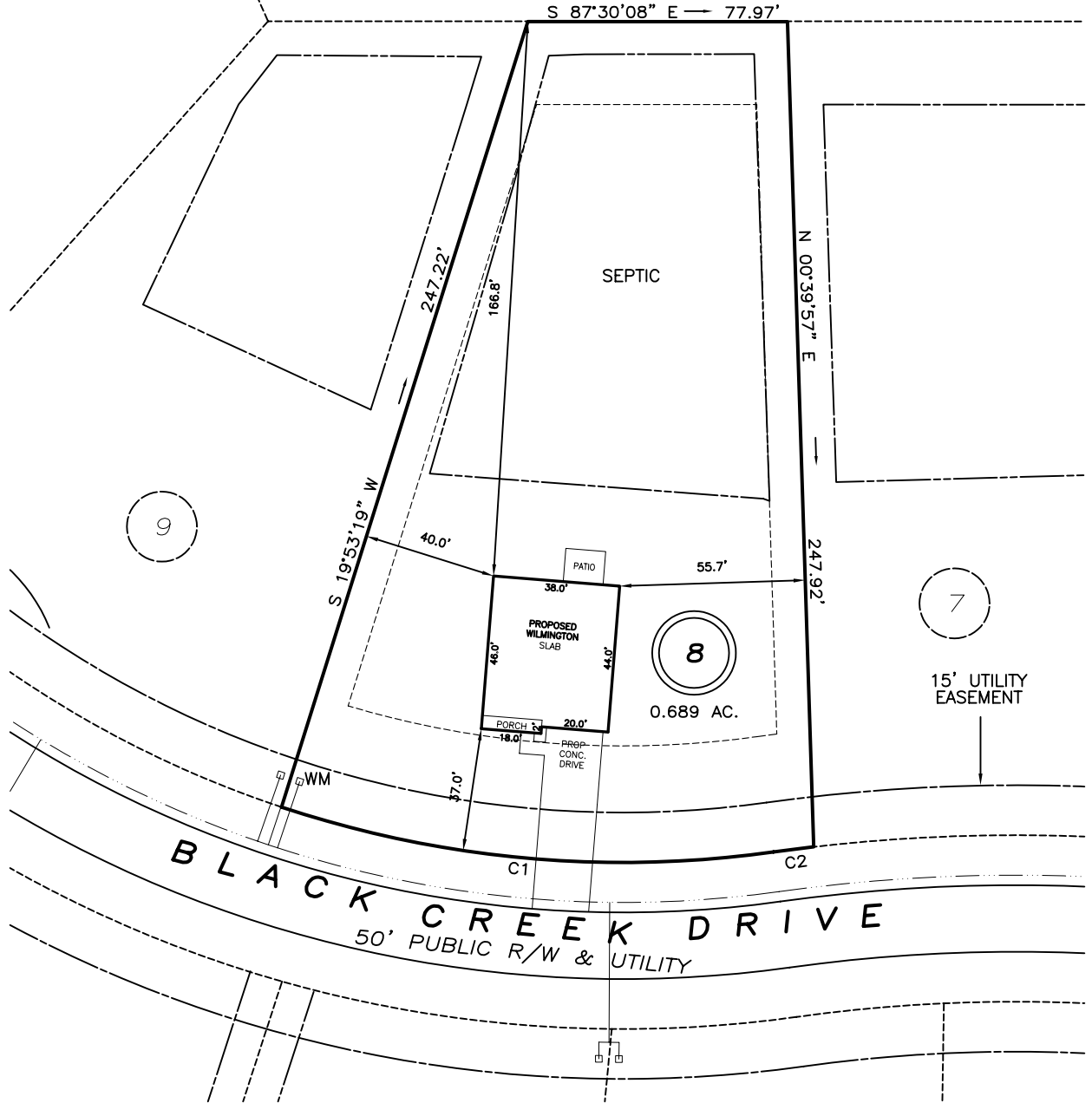


I, MICHAEL P. GRIFFIN, certify that under my direction and supervision this map was drawn from an actual field survey; that the error of closure of the survey as calculated by coordinates is 1: 10,000+; that the area shown hereon was calculated by coordinates.

Witness my hand and seal this day of MONTH 2023.

KELLY S. BAIN
 PIN #0528-65-5623.000
 D.B. 3478 PG. 581



7

15' UTILITY EASEMENT

8
0.689 AC.

9

BLACK CREEK DRIVE
 50' PUBLIC R/W & UTILITY

SETBACKS

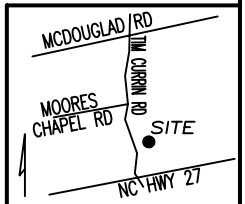
FRONT	35'
REAR	25'
SIDE	10'
CORNER SIDE	20'

C1 R=325.00' L=149.61' S82°17'29"E 148.30'
 C2 R=525.00' L=12.20' N85°11'10"E 12.20'

LEGEND

PRELIMINARY
 NOT FOR RECORDATION,
 SALES OR CONVEYANCE

EIP	EXISTING IRON PIPE	FES	FLARED END SECTION
IPS	IRON PIPE SET	WM	WATER METER
R/W	RIGHT OF WAY	CO	CLEAN OUT
N/F	NOW OR FORMERLY	FH	FIRE HYDRANT
EIS	EXISTING IRON STAKE	CB	CATCH BASIN



GRIFFIN LAND SURVEYING, INC.
 P. O. BOX 148
 FUQUAY-VARINA, NC 27526
 (919) - 567-1963

PLOT PLAN FOR
D.R. HORTON
 MCKAY PLACE
 LOT 8
 BLACK CREEK DRIVE
 LILLINGTON, N.C.
 HARNETT COUNTY UPPER LITTLE RIVER TOWNSHIP

DRAWN BY KDF	DATE 5/12/23
CHECKED BY MPG	SCALE 1" = 50'