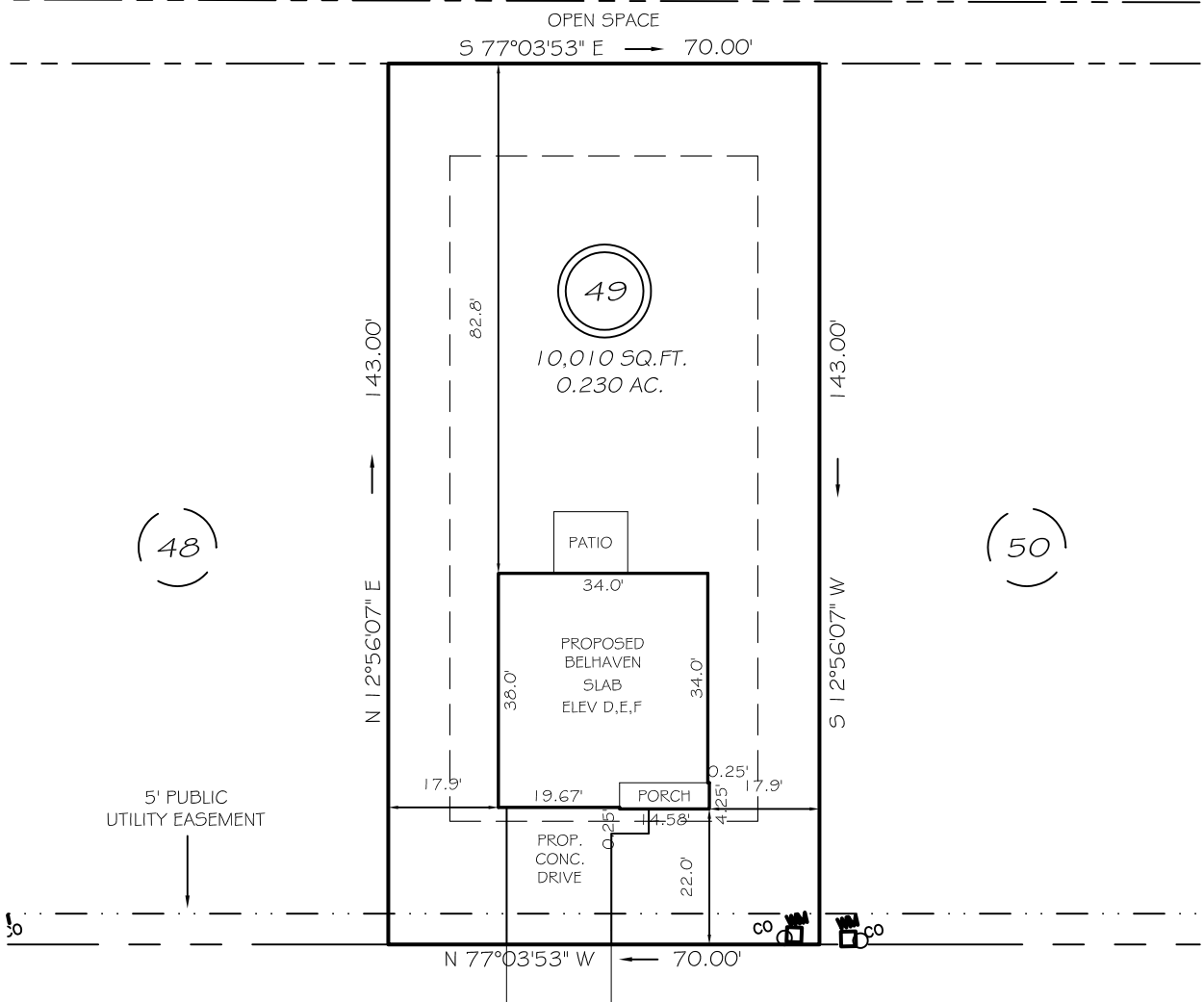
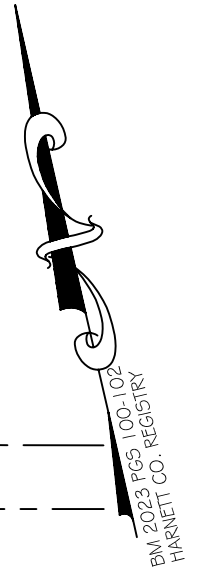


I, MICHAEL P. GRIFFIN, certify that under my direction and supervision this map was drawn from an actual field survey; that the error of closure of the survey as calculated by coordinates is 1: 10,000+; that the area shown hereon was calculated by coordinates.

Witness my hand and seal this day of MONTH 2023.

B. G. RAMBEAU #
C/O JAMES RAMBEAU
D.B. 242, PG. 448
PIN 0654-70-2102



238.34' @ 2.23%
BLUE ASPEN DRIVE
50' PUBLIC RW & UTILITY

MH 17
TOP 3

IMPERVIOUS AREAS

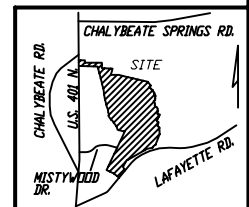
HOUSE	1 297 SQ. FT.
DRIVE & WALKS	403 SQ. FT.
PATIO	120 SQ. FT.
TOTAL	1 820 SQ. FT.
ALLOWED	3000 SQ. FT.

SETBACKS

FRONT	20'
REAR	15'
SIDE	10'
CORNER SIDE	15'

LEGEND

EIP	EXISTING IRON PIPE	MH	MANHOLE
IPS	IRON PIPE SET	WM	WATER METER
RAW	RIGHT OF WAY	CO	CLEAN OUT
N/F	NOW OR FORMERLY	FH	FIRE HYDRANT
EIS	EXISTING IRON STAKE	CB	CATCH BASIN



P R E L I M I N A R Y
NOT FOR RECORDATION,
SALES OR CONVEYANCE



GRIFFIN LAND SURVEYING, INC.

P. O. BOX 148
FUQUAY-VARINA, NC 27526
(919) - 567 - 1963

PLOT PLAN
FOR

D. R. HORTON

WOODGROVE

LOT 49

BLUE ASPEN DRIVE

NORTH CAROLINA

HARNETT CO. HECTOR'S CREEK TWSHP

DRAWN BY **KDF**

DATE **6/15/23**

CHECKED BY **MPG**

SCALE **1" = 30'**