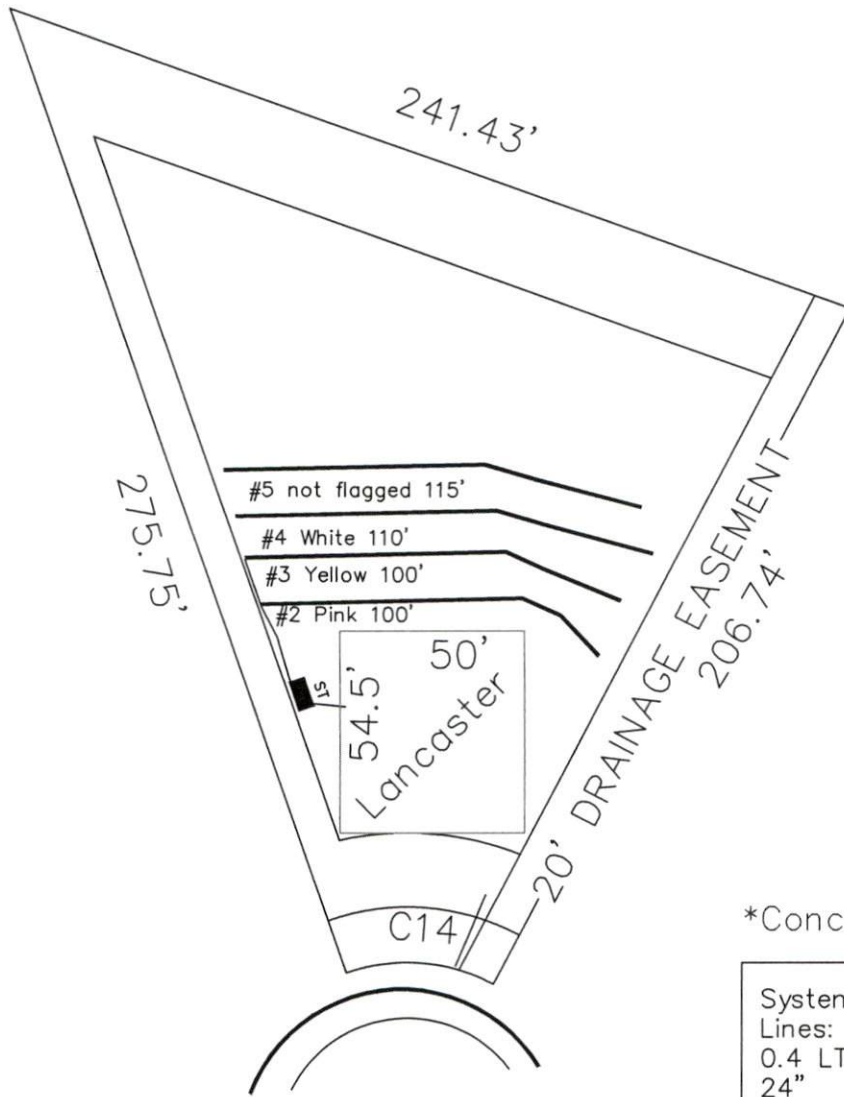


3-Bedroom Septic Plan  
 Lot #17 - Duncan's Crossing  
 Harnett County  
 Smith Douglas Homes



17

29,631 SF  
 (0.68 AC)

\*Concept only, not a permit

System: Gravity to serial  
 Lines: Lines 4-5 (225')  
 0.4 LTAR  
 24" Max Trench Bottom  
 Accepted Status System  
 Repair: Gravity to D-Box  
 Lines: Lines 2-3 (200')  
 0.4 LTAR  
 24" Trench Bottom  
 T&J Panel Block - 50% Reduction System

CLYDE DOG COURT  
 50' R/W (PUBLIC & UTILITY ACCESS)

GRAPHIC SCALE  
 1" = 50'



Adams  
 Soil Consulting  
 919-414-6761  
 Job #1146