



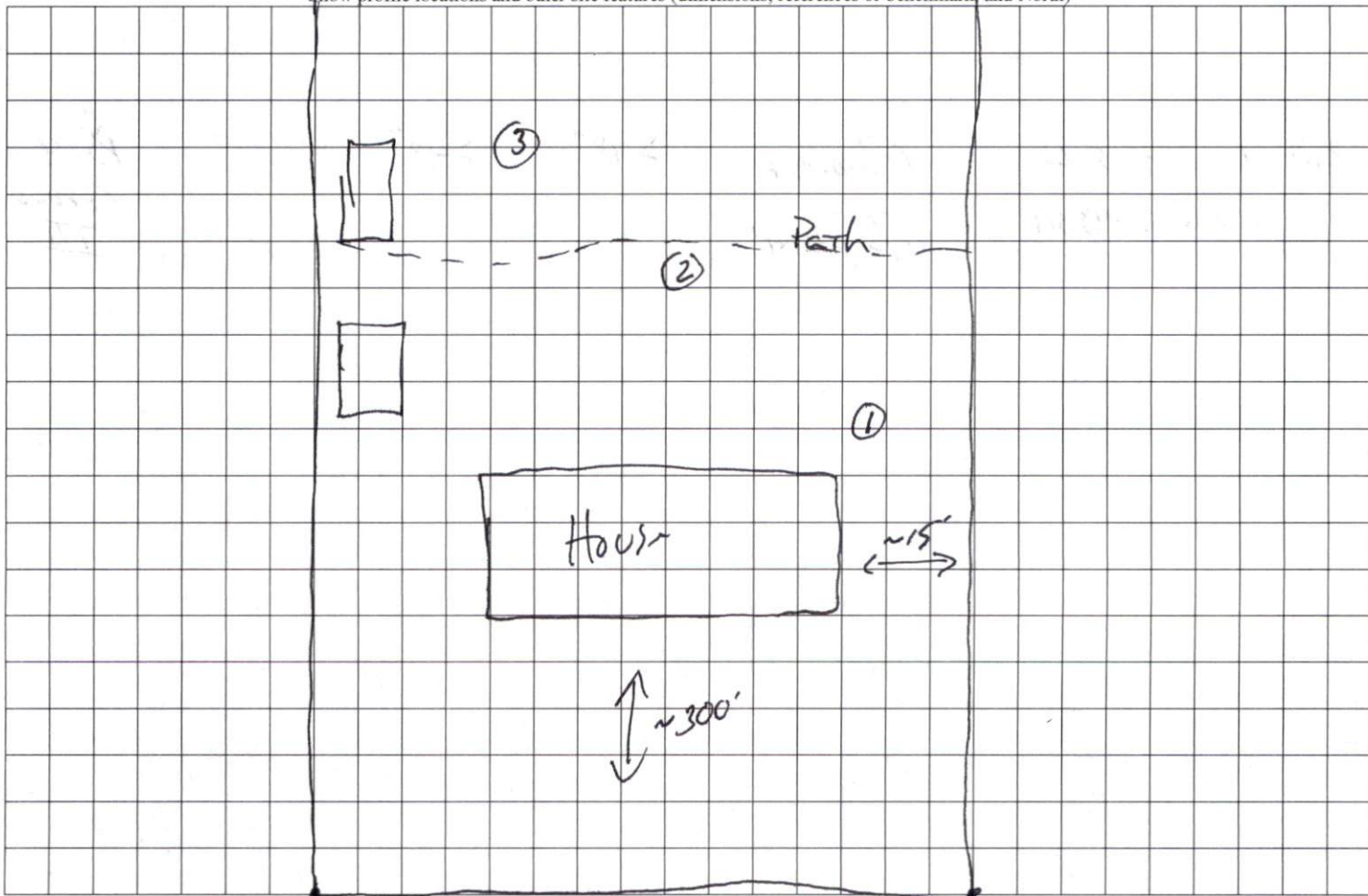
COMMENTS: \_\_\_\_\_

| LANDSCAPE POSITIONS | GROUP | TEXTURES            | .1955 LTAR | CONSISTENCE MOIST  | WET                |
|---------------------|-------|---------------------|------------|--------------------|--------------------|
| R-RIDGE             | I     | S-SAND              | 1.2 - 0.8  | VFR-VERY FRIABLE   | NS-NON-STICKY      |
| S-SHOULDER SLOPE    |       | LS-LOAMY SAND       |            | FR-FRIABLE         | SS-SLIGHTLY STICKY |
| L-LINEAR SLOPE      | II    | SL-SANDY LOAM       | 0.8 - 0.6  | FI-FIRM            | S-STICKY           |
| FS-FOOT SLOPE       |       | L-LOAM              |            | VFI-VERY FIRM      | VS-VERY STICKY     |
| N-NOSE SLOPE        | III   | SI-SILT             | 0.6 - 0.3  | EFI-EXTREMELY FIRM | NP-NON-PLASTIC     |
| H-HEAD SLOPE        |       | SIL-SILT LOAM       |            |                    | SP-SLIGHTLY STICKY |
| CC-CONCLAVE SLOPE   |       | CL-CLAY LOAM        |            |                    | P-PLASTIC          |
| CV-CONVEX SLOPE     |       | SCL-SANDY CLAY LOAM |            |                    | VP-VERY PLASTIC    |
| T-TERRACE           | IV    | SIC-SILTY CLAY      | 0.4 - 0.1  |                    |                    |
| FP-FLOOD PLAN       |       | C-CLAY              |            |                    |                    |
|                     |       | SC-SANDY CLAY       |            |                    |                    |

STRUCTURE  
 SG-SINGLE GRAIN  
 M-MASSIVE  
 CR-CRUMB  
 GR-GRANULAR  
 SBK-SUBANGULAR BLOCKY  
 ABK-ANGULAR BLOCKY  
 PL-PLATY  
 PR-PRISMATIC

MINERALOGY  
 SLIGHTLY EXPANSIVE  
 EXPANSIVE

Show profile locations and other site features (dimensions, references or benchmark, and North)



Joe Collins