

THIS PLAN HAS BEEN DRAWN TO CONFORM TO THE 2018 NORTH CAROLINA RESIDENTIAL CODE

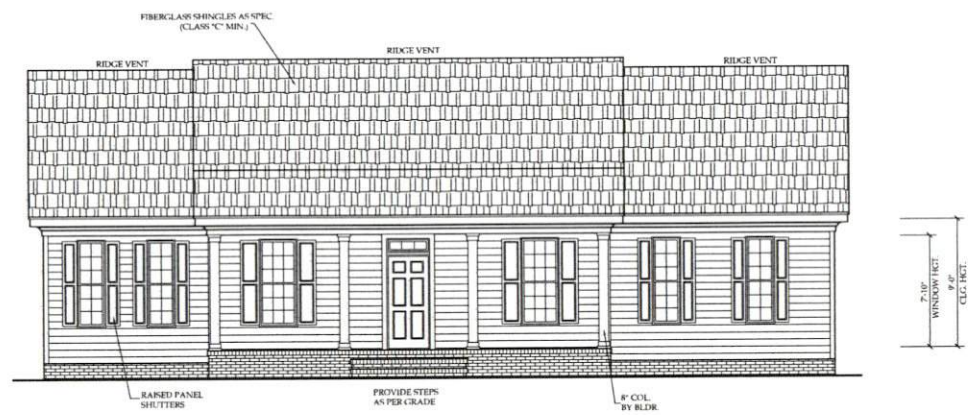
CONTRACTOR SHALL VERIFY ALL DIMENSIONS AND CONDITIONS PRIOR TO BEGINNING WORK. CONTRACTOR IS RESPONSIBLE FOR COMPLIANCE WITH ALL STATE AND LOCAL BUILDING CODES AND ORDINANCES. KADS CUSTOM HOME DESIGNS ASSUMES NO LIABILITY FOR SITE CONDITIONS, CONSTRUCTION METHODS OR ANY DEVIATION OF THESE PLANS.

**NOTE:**  
ALL WINDOWS TO BE INSTALLED MUST MEET A MAXIMUM OF 32 U VALUE OR BETTER, UNLESS ENERGY CALCULATIONS ARE SUBMITTED WITH PLANS PROVIDED BY BUILDER AT TIME OF PLAN REVIEW.

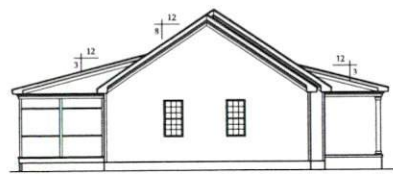
NOTICE TO CONTRACTOR  
All materials and workmanship shall comply with Building Codes and all applicable codes and standards.

APPROVED  
[Signature]  
08/23/2023

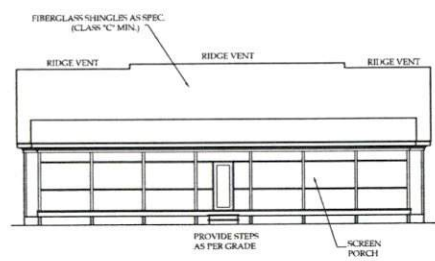
Harnett COUNTY  
NORTH CAROLINA



**FRONT ELEVATION**  
SCALE 1/4"=1'-0"



**LEFT ELEVATION**  
SCALE 1/8"=1'-0"



**REAR ELEVATION**  
SCALE 1/8"=1'-0"



**RIGHT ELEVATION**  
SCALE 1/8"=1'-0"

KADS CUSTOM HOME DESIGNS



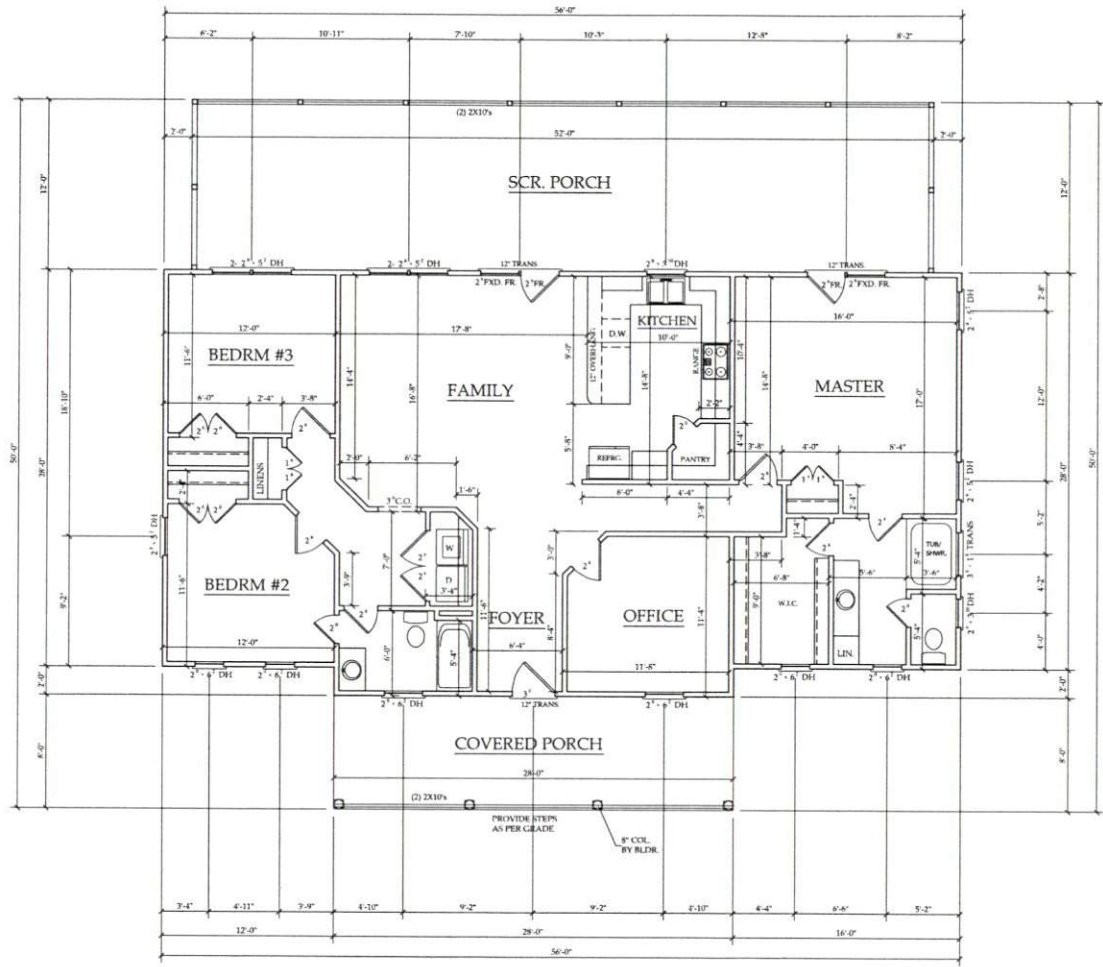
ANGIER, NC  
919-369-7181  
DRAWN BY:  
D.W.O.  
DATE:  
1/5/23  
PAGE NO  
**1**  
OF  
5  
PLAN NO.  
DK1624

### STRUCTURAL NOTES

1 ALL CONCRETE SHALL BE 4000 PSI STRENGTH CONCRETE WITH 4% STEEL FIBERS. ALL REINFORCING SHALL BE #4 BARS UNLESS OTHERWISE NOTED.  
 2 FLOOR SLABS SHALL BE 4" THICK UNLESS OTHERWISE NOTED.

DESCRIPTION	THICKNESS (IN)	REINFORCING (IN)	SECTION
SLAB	4"	#4	12"x10"
WALL	8"	#4	12"x8"
FOUNDATION	12"	#4	12"x12"
EXTERIOR WALL	8"	#4	12"x8"
CEILING	4"	#4	12"x10"
ROOF	4"	#4	12"x10"
BASE	4"	#4	12"x10"
FOUNDATION	12"	#4	12"x12"

1. FOUNDATION SHALL BE CONCRETE ON GRADE.
2. ALL CONCRETE SHALL BE 4000 PSI STRENGTH CONCRETE WITH 4% STEEL FIBERS. ALL REINFORCING SHALL BE #4 BARS UNLESS OTHERWISE NOTED.
3. FOUNDATION SHALL BE 12" THICK UNLESS OTHERWISE NOTED.
4. ALL CONCRETE SHALL BE 4000 PSI STRENGTH CONCRETE WITH 4% STEEL FIBERS. ALL REINFORCING SHALL BE #4 BARS UNLESS OTHERWISE NOTED.
5. ALL CONCRETE SHALL BE 4000 PSI STRENGTH CONCRETE WITH 4% STEEL FIBERS. ALL REINFORCING SHALL BE #4 BARS UNLESS OTHERWISE NOTED.
6. ALL CONCRETE SHALL BE 4000 PSI STRENGTH CONCRETE WITH 4% STEEL FIBERS. ALL REINFORCING SHALL BE #4 BARS UNLESS OTHERWISE NOTED.
7. ALL CONCRETE SHALL BE 4000 PSI STRENGTH CONCRETE WITH 4% STEEL FIBERS. ALL REINFORCING SHALL BE #4 BARS UNLESS OTHERWISE NOTED.
8. ALL CONCRETE SHALL BE 4000 PSI STRENGTH CONCRETE WITH 4% STEEL FIBERS. ALL REINFORCING SHALL BE #4 BARS UNLESS OTHERWISE NOTED.
9. ALL CONCRETE SHALL BE 4000 PSI STRENGTH CONCRETE WITH 4% STEEL FIBERS. ALL REINFORCING SHALL BE #4 BARS UNLESS OTHERWISE NOTED.
10. ALL CONCRETE SHALL BE 4000 PSI STRENGTH CONCRETE WITH 4% STEEL FIBERS. ALL REINFORCING SHALL BE #4 BARS UNLESS OTHERWISE NOTED.
11. ALL CONCRETE SHALL BE 4000 PSI STRENGTH CONCRETE WITH 4% STEEL FIBERS. ALL REINFORCING SHALL BE #4 BARS UNLESS OTHERWISE NOTED.
12. ALL CONCRETE SHALL BE 4000 PSI STRENGTH CONCRETE WITH 4% STEEL FIBERS. ALL REINFORCING SHALL BE #4 BARS UNLESS OTHERWISE NOTED.
13. ALL CONCRETE SHALL BE 4000 PSI STRENGTH CONCRETE WITH 4% STEEL FIBERS. ALL REINFORCING SHALL BE #4 BARS UNLESS OTHERWISE NOTED.
14. ALL CONCRETE SHALL BE 4000 PSI STRENGTH CONCRETE WITH 4% STEEL FIBERS. ALL REINFORCING SHALL BE #4 BARS UNLESS OTHERWISE NOTED.
15. ALL CONCRETE SHALL BE 4000 PSI STRENGTH CONCRETE WITH 4% STEEL FIBERS. ALL REINFORCING SHALL BE #4 BARS UNLESS OTHERWISE NOTED.
16. ALL CONCRETE SHALL BE 4000 PSI STRENGTH CONCRETE WITH 4% STEEL FIBERS. ALL REINFORCING SHALL BE #4 BARS UNLESS OTHERWISE NOTED.
17. ALL CONCRETE SHALL BE 4000 PSI STRENGTH CONCRETE WITH 4% STEEL FIBERS. ALL REINFORCING SHALL BE #4 BARS UNLESS OTHERWISE NOTED.
18. ALL CONCRETE SHALL BE 4000 PSI STRENGTH CONCRETE WITH 4% STEEL FIBERS. ALL REINFORCING SHALL BE #4 BARS UNLESS OTHERWISE NOTED.
19. ALL CONCRETE SHALL BE 4000 PSI STRENGTH CONCRETE WITH 4% STEEL FIBERS. ALL REINFORCING SHALL BE #4 BARS UNLESS OTHERWISE NOTED.
20. ALL CONCRETE SHALL BE 4000 PSI STRENGTH CONCRETE WITH 4% STEEL FIBERS. ALL REINFORCING SHALL BE #4 BARS UNLESS OTHERWISE NOTED.



HEATED	FIRST FLOOR HTD. SQ. FT.	= 1624
UNHEATED	FRONT PORCH SQ. FT.	= 234
	SCREEN PORCH SQ. FT.	= 634

**FIRST FLOOR PLAN**  
 SCALE: 1/4" = 1'-0"  
 9'-0" CLG. HGT.  
 SET WINDOWS AT 7'-10" A.F.F.

KADS CUSTOM HOME DESIGNS



ANGIER, NC  
 919-369-7181

DRAWN BY:  
 D.W.O.

DATE:  
 1/5/23

PAGE NO

**2**

OF

5

PLAN NO.  
 DK1624





ANDER, NC  
919-897-7181

DRAWN BY:  
D.W.O.

DATE:  
1/5/23

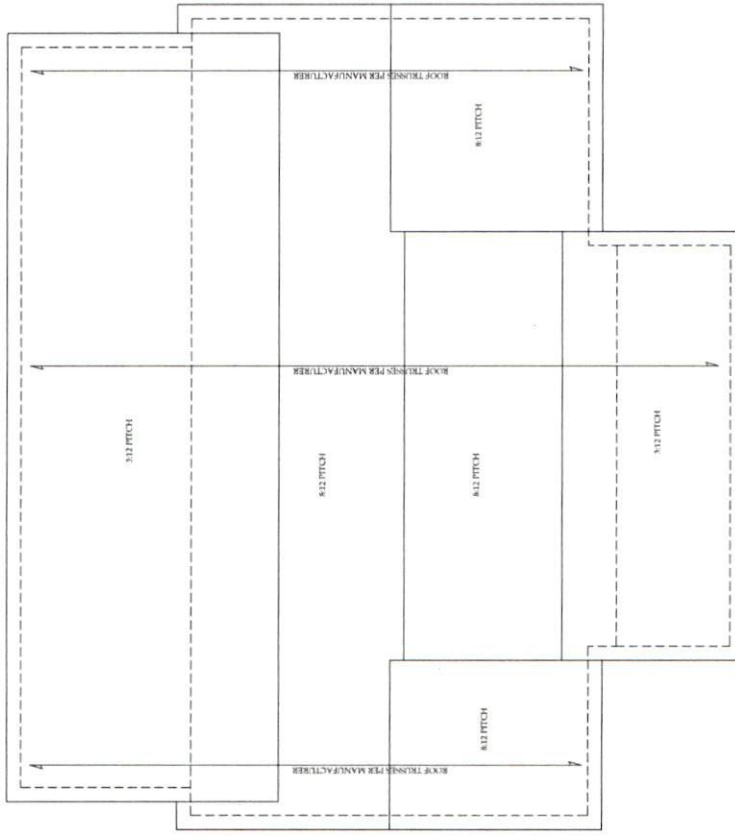
PAGE NO

4

OF

5

PLAN NO.  
DK1624



ROOF PLAN  
SCALE: 1/4"=1'-0"

