

**LEGEND**

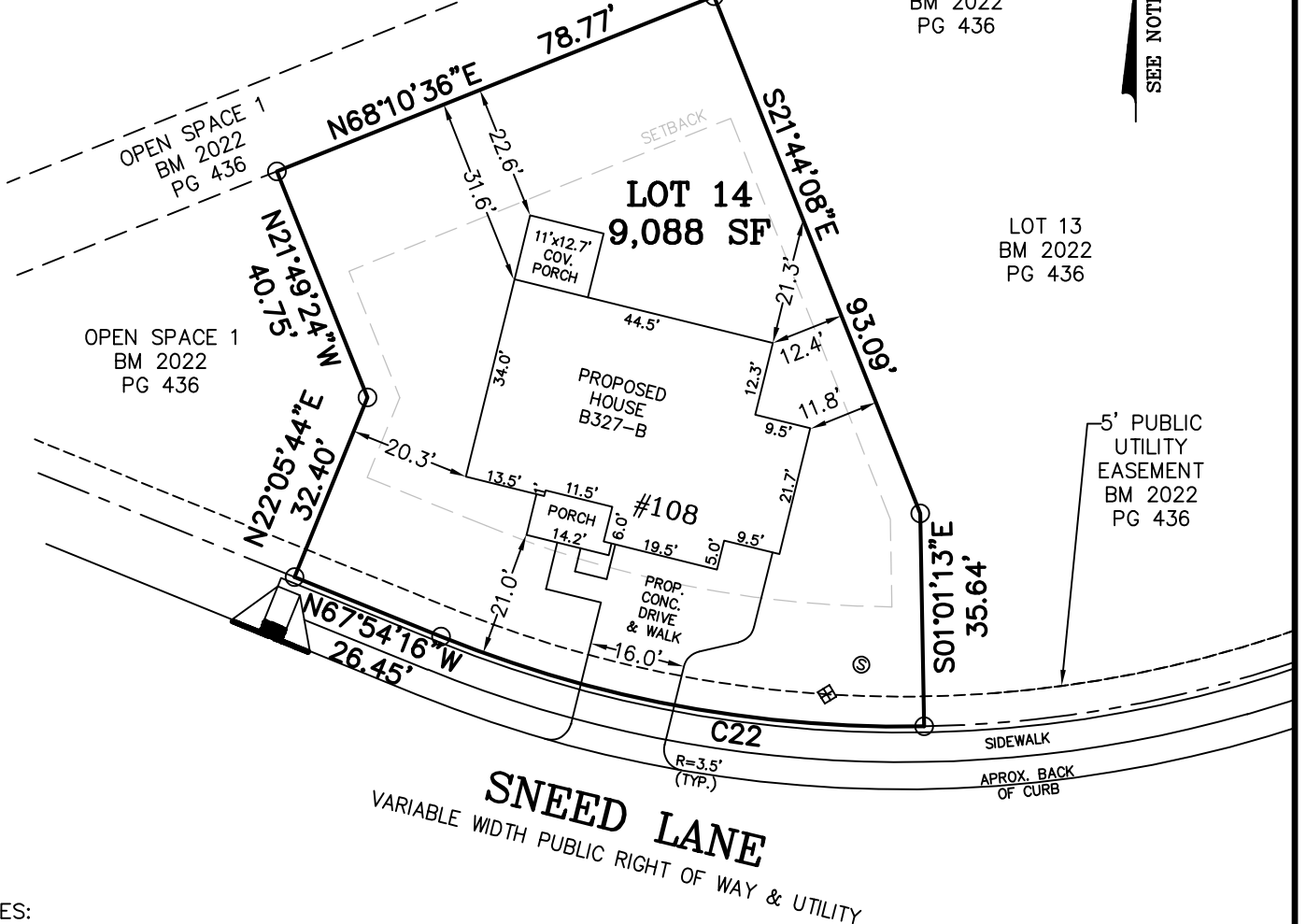
- MATHEMATICAL POINT
- CONTROL CORNER
- ⊞ WATER METER
- ⊙ SEWER CLEAN OUT
- ⊗ FIRE HYDRANT

CURVE TABLE				
CURVE	LENGTH	RADIUS	CHORD BEARING	CHORD
C22	82.71'	205.00'	N79°27'44"W	82.15'

VICINITY MAP (NTS)

JASON M. WEISS  
 BRITTANY P. WEISS  
 D.B. 3994, PG. 377  
 B.M. 2018, PG. 23  
 P.I.N. 0655-24-2624.000  
 P.I.D. 080655 0052 05

SEE NOTES



**NOTES:**

- REFERENCE HARNETT CO. BM 2022, PG 434-448 FOR BOUNDARY INFORMATION, NORTH INDEX & TIE LINES TO SUBDIVISION CONTROL CORNERS.
- ZONED: RA-30, RA-40, & CONSERVATION.
- SETBACKS:  
 43' LOT WIDTH:  
 FRONT YARD-20', SIDE YARD-4' & 4' OR 0' & 8', REAR YARD-20', CORNER YARD-12'.  
 >43' LOT WIDTH:  
 FRONT YARD-20', SIDE YARD-5', REAR YARD-20', CORNER YARD-12'.
- PROPERTY IS NOT LOCATED WITHIN A SPECIAL FLOOD HAZARD AREA AS SCALED FROM THE NFIP FIRM No. 3720065500L (EFFECTIVE DATE: JULY 19, 2022).

MAXIMUM ALLOWABLE IMPERVIOUS-4,000 SF

TOTAL ESTIMATED IMPERVIOUS-2,660 SF	
	SQ. FT.
SITE	
HOUSE	1,909
DRIVEWAY	548
LEAD WALK	54
COV. PORCH	140
A/C PAD	9

**PERMIT PLAN LOT: 14**

SERENITY SUBDIVISION, PHASE 1  
 HECTORS CREEK TOWNSHIP, HARNETT COUNTY, NC

SURVEYED FOR  
**DAVID WEEKLEY HOMES**  
 1901 N. HARRISON AVENUE, SUITE 200  
 CARY, NC 27513

I HEREBY CERTIFY THAT THE BUILDING WILL LIE WHOLLY ON THE LOT. THIS PLAT IS OF AN EXISTING PARCEL OF LAND. THIS IS NOT A SURVEY AND NOT FOR RECORDATION PURPOSES.



**MSS LAND CONSULTANTS, PC**  
 "Committed to Total Quality Service"  
 Firm License: C-2070  
 EST. 1998

6118 St. Giles St Phone (919) 510-4464  
 (Suite E) Fax (919) 510-9102  
 Raleigh, NC 27612 Email: gowersw@mssland.com

**PRELIMINARY PLAN**

WADE A. GOWERS, PLS L-4639