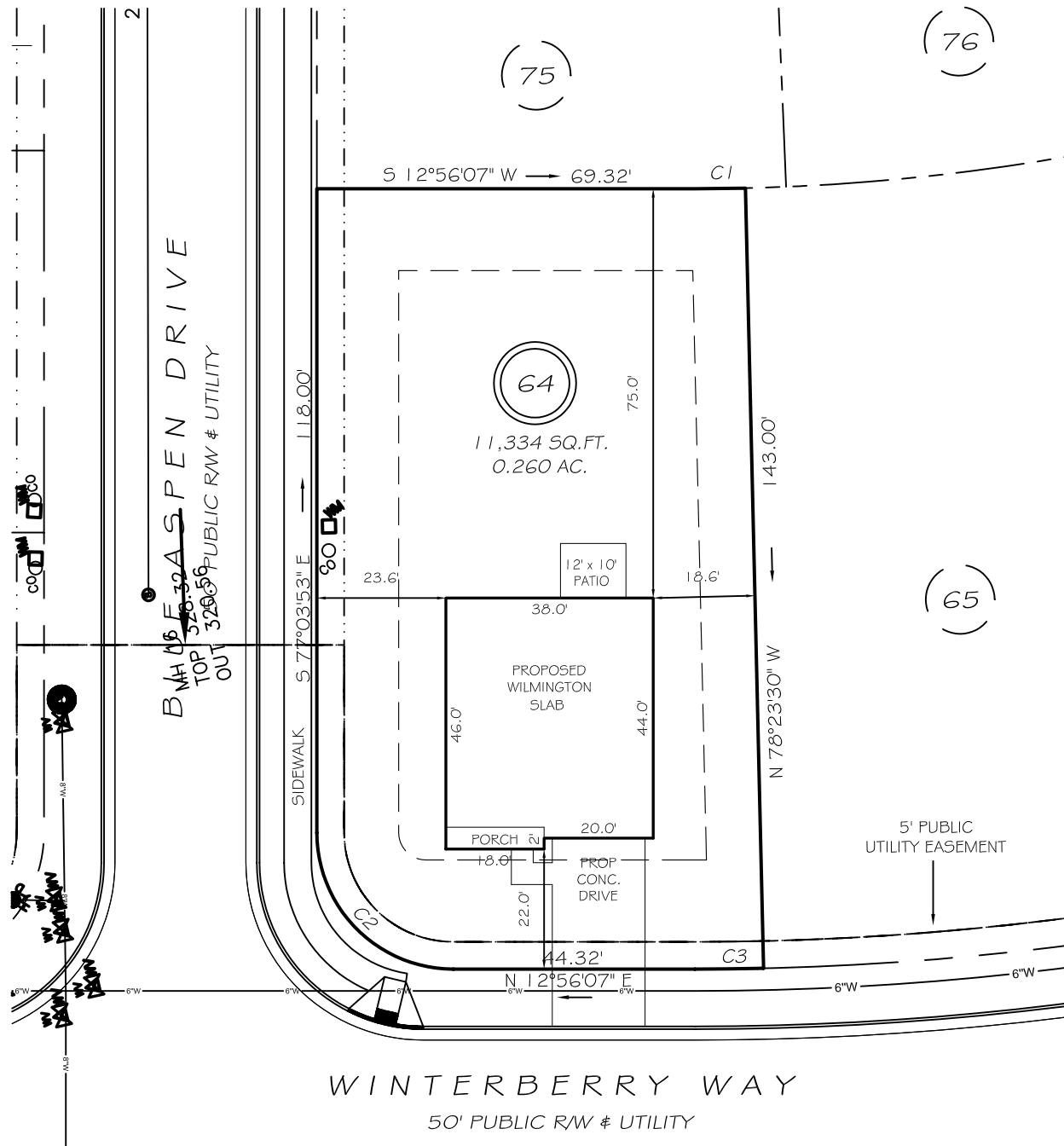


I, MICHAEL P. GRIFFIN, certify that under my direction and supervision this map was drawn from an actual field survey; that the error of closure of the survey as calculated by coordinates is 1: 10,000+; that the area shown hereon was calculated by coordinates.

Witness my hand and seal this day of MONTH 2023.

BM 2023 PGS 100-102
HARNETT CO. REGISTRY



WINTERBERRY WAY
50' PUBLIC RW & UTILITY

IMPERVIOUS AREAS

HOUSE	1708 SQ. FT.
DRIVE & WALKS	448 SQ. FT.
PATIO	120 SQ. FT.
TOTAL	2276 SQ. FT.
ALLOWED	3000 SQ. FT.

SETBACKS

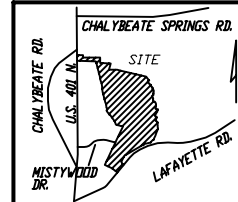
FRONT	20'
REAR	15'
SIDE	10'
CORNER SIDE	15'

C1 R=398.00' L=16.67' N11°44'08"E 16.67'
C2 R=25.00' L=39.27' N57°56'07"E 35.36'
C3 R=541.00' L=12.53' N12°16'19"E 12.53'

PRELIMINARY
NOT FOR RECORDATION,
SALES OR CONVEYANCE

LEGEND

EIP	EXISTING IRON PIPE	MH	MANHOLE
IPS	IRON PIPE SET	WM	WATER METER
RAW	RIGHT OF WAY	CO	CLEAN OUT
N/F	NOW OR FORMERLY	FH	FIRE HYDRANT
EIS	EXISTING IRON STAKE	CB	CATCH BASIN



GRIFFIN LAND SURVEYING, INC.

P.O. BOX 148
FUQUAY-VARINA, NC 27526
(919) - 567 - 1963

PLOT PLAN
FOR

D. R. HORTON

WOODGROVE

LOT 64

WINTERBERRY WAY
NORTH CAROLINA

HARNETT CO. HECTOR'S CREEK TWSHP

DRAWN BY **KDF**

DATE **6/15/23**

CHECKED BY **MPG**

SCALE **1" = 30'**