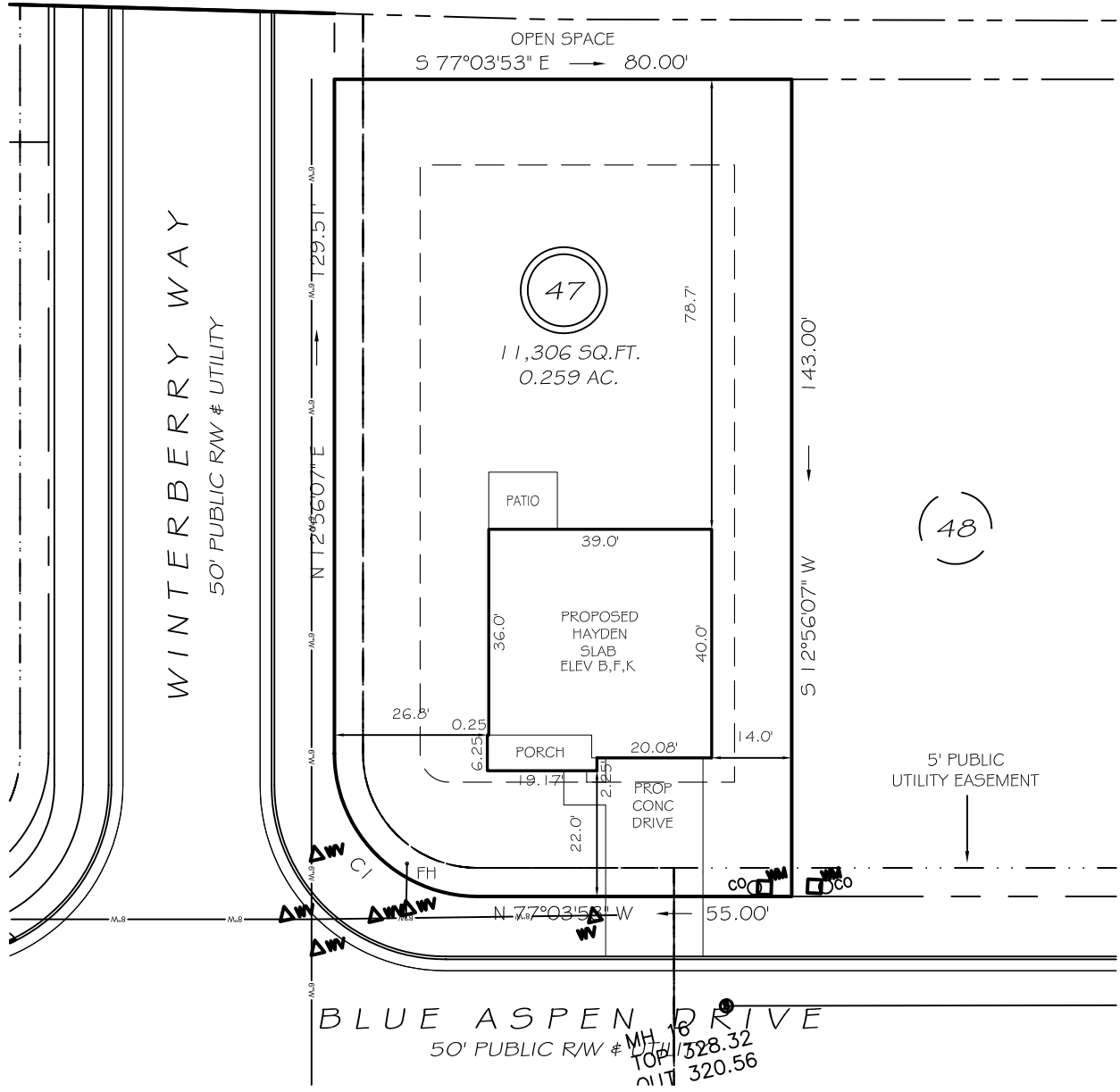
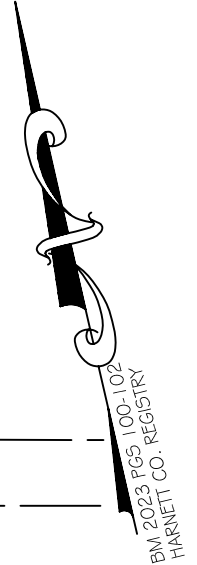


I, MICHAEL P. GRIFFIN, certify that under my direction and supervision this map was drawn from an actual field survey; that the error of closure of the survey as calculated by coordinates is 1: 10,000+; that the area shown hereon was calculated by coordinates.

Witness my hand and seal this day of MONTH 2023.

B. G. RAMBEAU &
C/O JAMES RAMBEAU
D.B. 242, PG. 448
PIN 0654-70-2102



IMPERVIOUS AREAS

HOUSE	1604 SQ. FT.
DRIVE & WALKS	450 SQ. FT.
PATIO	120 SQ. FT.
TOTAL	2174 SQ. FT.
ALLOWED	3000 SQ. FT.

SETBACKS

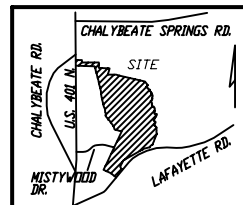
FRONT	20'
REAR	15'
SIDE	10'
CORNER SIDE	15'

CI R=25.00' L=30.08' N73°41'06"W 30.07'

PRELIMINARY
NOT FOR RECORDATION,
SALES OR CONVEYANCE

LEGEND

EIP	EXISTING IRON PIPE	MH	MANHOLE
IPS	IRON PIPE SET	WM	WATER METER
RAW	RIGHT OF WAY	CO	CLEAN OUT
N/F	NOW OR FORMERLY	FH	FIRE HYDRANT
EIS	EXISTING IRON STAKE	CB	CATCH BASIN



GLS GRIFFIN LAND SURVEYING, INC.
P.O. BOX 148
FUQUAY-VARINA, NC 27526
(919) - 567 - 1963

PLOT PLAN
FOR
D. R. HORTON
WOODGROVE
LOT 47
BLUE ASPEN DRIVE
NORTH CAROLINA
HARNETT CO. HECTOR'S CREEK TWSHP

DRAWN BY KDF	DATE 6/15/23
CHECKED BY MPG	SCALE 1" = 30'