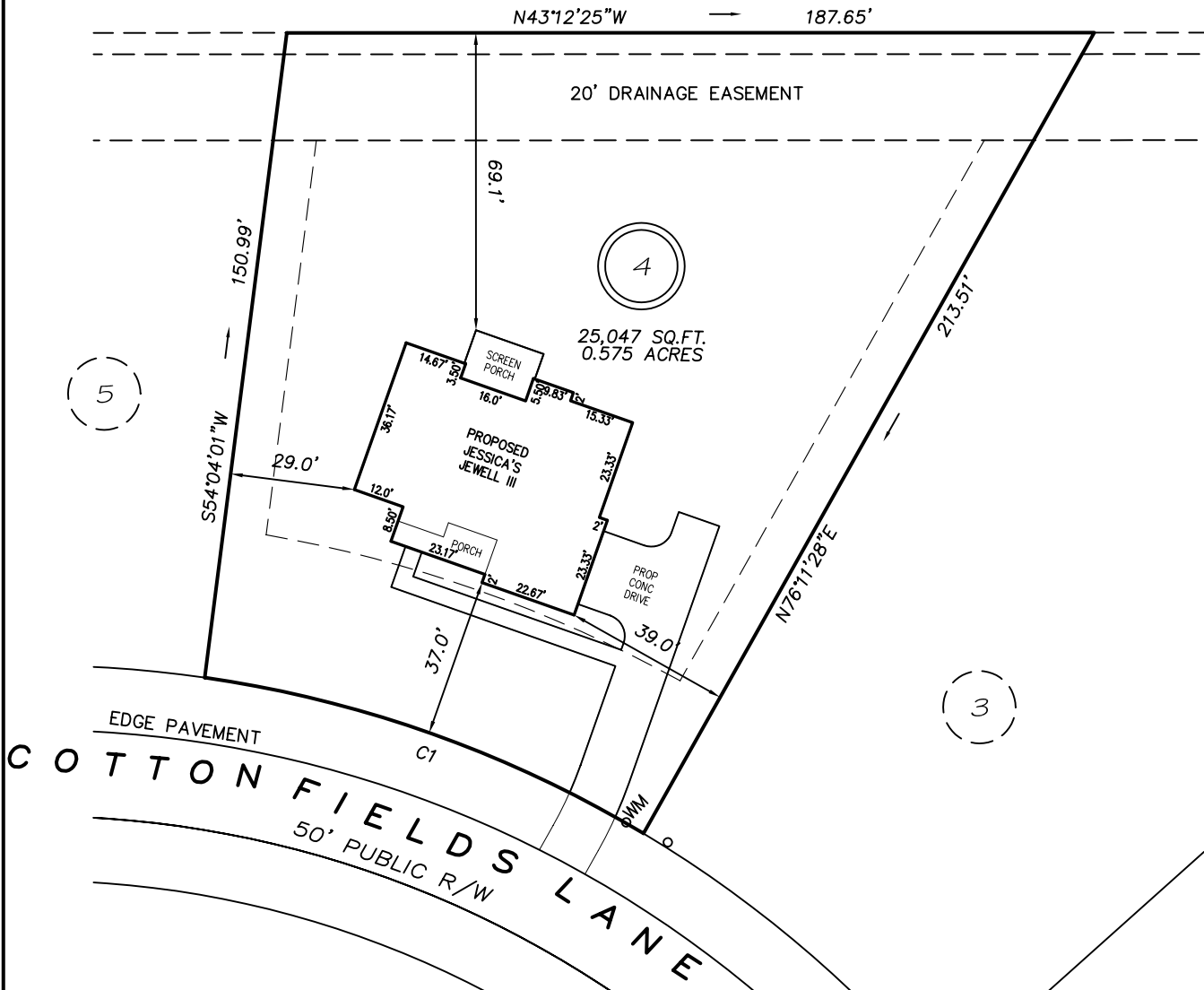


I, MICHAEL P. GRIFFIN, certify that under my direction and supervision this map was drawn from an actual field survey; that the error of closure of the survey as calculated by coordinates is 1: 10,000+; that the area shown hereon was calculated by coordinates.

Witness my hand and seal this day of MONTH 2023.

HARNETT CO. REGISTRY
 BM 2023 PAGES 200-207

N/F
 R.L JOHNSON FAMILY
 LIMITED PARTNERSHIP
 DB 1048 PAGE 256
 PIN 0643-32-5147



IMPERVIOUS AREAS

HOUSE	2635 SQ. FT.
DRIVE & WALKS	1320 SQ. FT.
PATIO	000 SQ. FT.
TOTAL	3955 SQ. FT.
ALLOWED	7000 SQ. FT.

SETBACKS

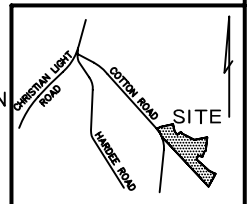
FRONT	35'
REAR	25'
SIDE	10'
CORNER SIDE	20'

C1 R=275.00' L=108.92' S23°38'24"E 108.21'

P R E L I M I N A R Y
 NOT FOR RECORDATION,
 SALES OR CONVEYANCE

LEGEND

EIP	EXISTING IRON PIPE	FES	FLARED END SECTION
IPS	IRON PIPE SET	WM	WATER METER
R/W	RIGHT OF WAY	CO	CLEAN OUT
N/F	NOW OR FORMERLY	FH	FIRE HYDRANT
EIS	EXISTING IRON STAKE	CB	CATCH BASIN



GRIFFIN LAND SURVEYING, INC.

P. O. BOX 148
 FUQUAY-VARINA, NC 27526
 (919) - 567-1963

PLOT PLAN
 FOR

REESE CONSTRUCTION

COTTON FARMS

LOT 4

64 COTTON FIELDS LANE

FUQUAY VARINA, N.C.

HARNETT COUNTY HECTOR'S CREEK TOWNSHIP

DRAWN BY KDF

DATE 6/12/23

CHECKED BY MPG

SCALE 1" = 40'