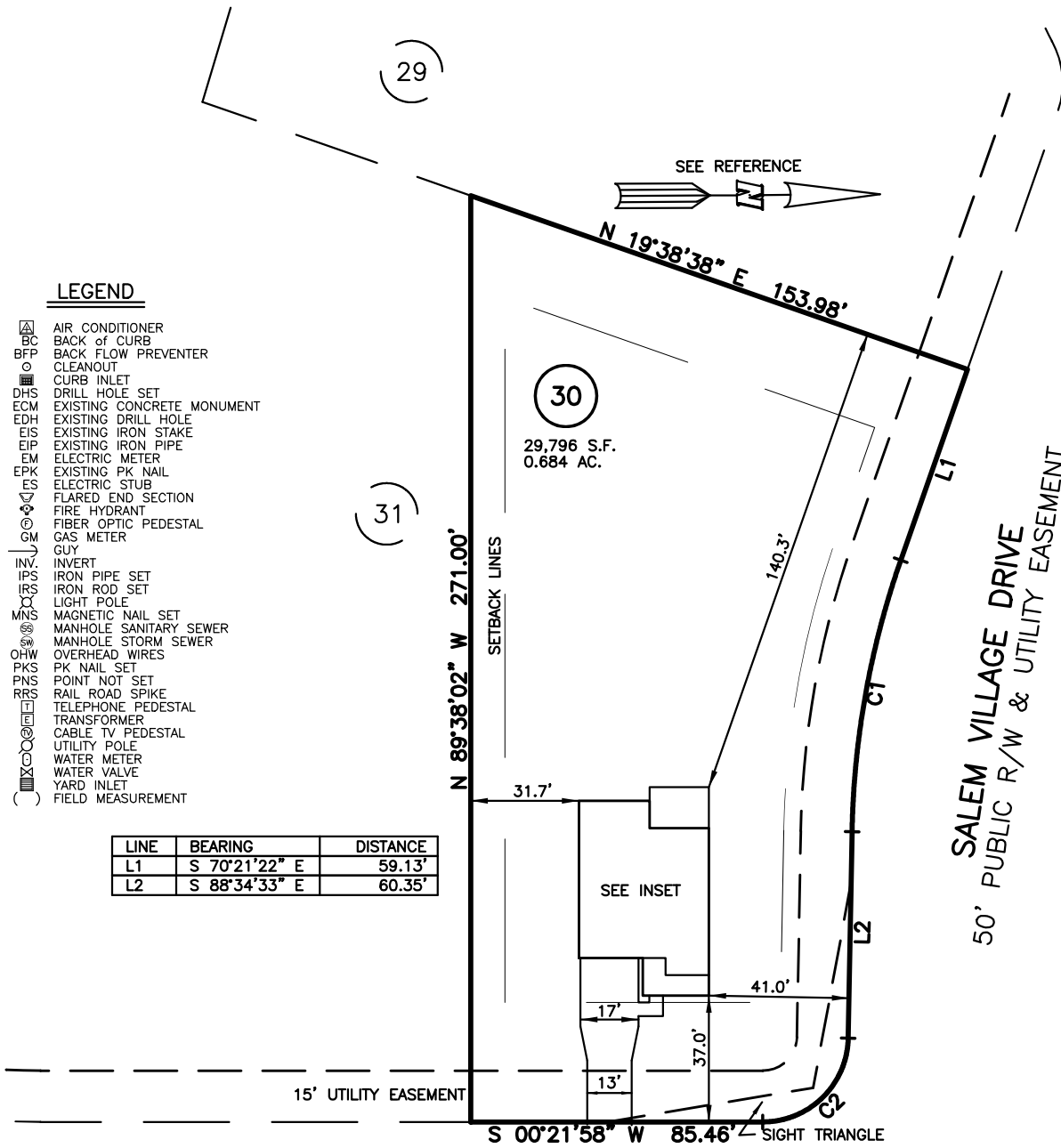


PLOT PLAN FOR
NEW HOME INC., LLC
 WILLOW CREEK PLACE
 LOT 30, WOODBRIDGE SOUTH
 BUCKHORN TOWNSHIP, HARNETT COUNTY, NORTH CAROLINA

LEGEND

- ⊠ AIR CONDITIONER
- BC BACK OF CURB
- BFP BACK FLOW PREVENTER
- CLEANOUT
- CURB INLET
- DHS DRILL HOLE SET
- EQM EXISTING CONCRETE MONUMENT
- EDH EXISTING DRILL HOLE
- EIS EXISTING IRON STAKE
- EIP EXISTING IRON PIPE
- EM ELECTRIC METER
- EPK EXISTING PK NAIL
- ES ELECTRIC STUB
- FLS FLARED END SECTION
- FH FIRE HYDRANT
- FOP FIBER OPTIC PEDESTAL
- GM GAS METER
- GUY GUY
- INV INVERT
- IPS IRON PIPE SET
- IRS IRON ROD SET
- LP LIGHT POLE
- MNS MAGNETIC NAIL SET
- MS MANHOLE SANITARY SEWER
- MS MANHOLE STORM SEWER
- OHW OVERHEAD WIRES
- PKS PK NAIL SET
- PNS POINT NOT SET
- RSS RAIL ROAD SPIKE
- TP TELEPHONE PEDESTAL
- TR TRANSFORMER
- CTV CABLE TV PEDESTAL
- UP UTILITY POLE
- WM WATER METER
- WV WATER VALVE
- YI YARD INLET
- () FIELD MEASUREMENT

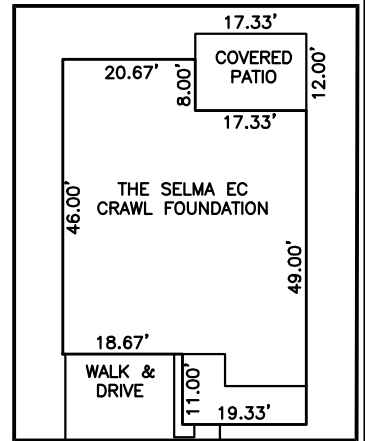
LINE	BEARING	DISTANCE
L1	S 70°21'22" E	59.13'
L2	S 88°34'33" E	60.35'



WILLOW CREEK PLACE
 50' PUBLIC R/W & UTILITY EASEMENT

NUM	RADIUS	ARC	DELTA	CHORD BRG	CHORD
C1	255.00'	81.09'	18°13'10"	N 79°27'57" W	80.75'
C2	25.00'	38.81'	88°56'31"	N 44°06'17" W	35.03'

IMPERVIOUS SURFACES	
HOUSE	1,830 S.F.
WALK & DRIVE	760 S.F.
PORCH	210 S.F.
TOTAL	2,800 S.F.
MAX IMPERVIOUS	4,000 S.F.



SETBACK INFO

- FRONT: _____ 35'
- REAR: _____ 25'
- SIDES: _____ 10'
- CORNER SIDE: _____ 20'



SCALE: 1" = 50'

NOTES

1. THIS SURVEY SUBJECT TO ANY FACTS THAT MAY BE DISCLOSED BY A FULL AND ACCURATE TITLE SEARCH.
2. THIS MAP MAY NOT BE A CERTIFIED SURVEY AND HAS NOT BEEN REVIEWED BY A LOCAL GOVERNMENT AGENCY FOR COMPLIANCE WITH ANY APPLICABLE LAND DEVELOPMENT REGULATIONS AND HAS NOT BEEN REVIEWED FOR COMPLIANCE WITH RECORDING REQUIREMENTS FOR PLATS.

REFERENCES:

P.B. 2023, PGS 92-94

PLOT PLAN
 PRELIMINARY PLAT- NOT FOR RECORDATION,
 CONVEYANCE OR SALES

REV CODE: 1.FLIP, 2.PLAN, 3.ROTATE, 4.MOVE, 5.SS
 6.SEVERAL OF ABOVE, 7.LAND FEATURE, 8. OTHER

DATE: JUNE 5, 2023

F.B. _____

RWK, PA
ENGINEERING ~ SURVEYING
 CORPORATE LICENSE: C-1771
 101 W. MAIN ST., SUITE 202
 GARNER, NC 27529
 PHONE (919) 779-4854
 FAX (919) 779-4056