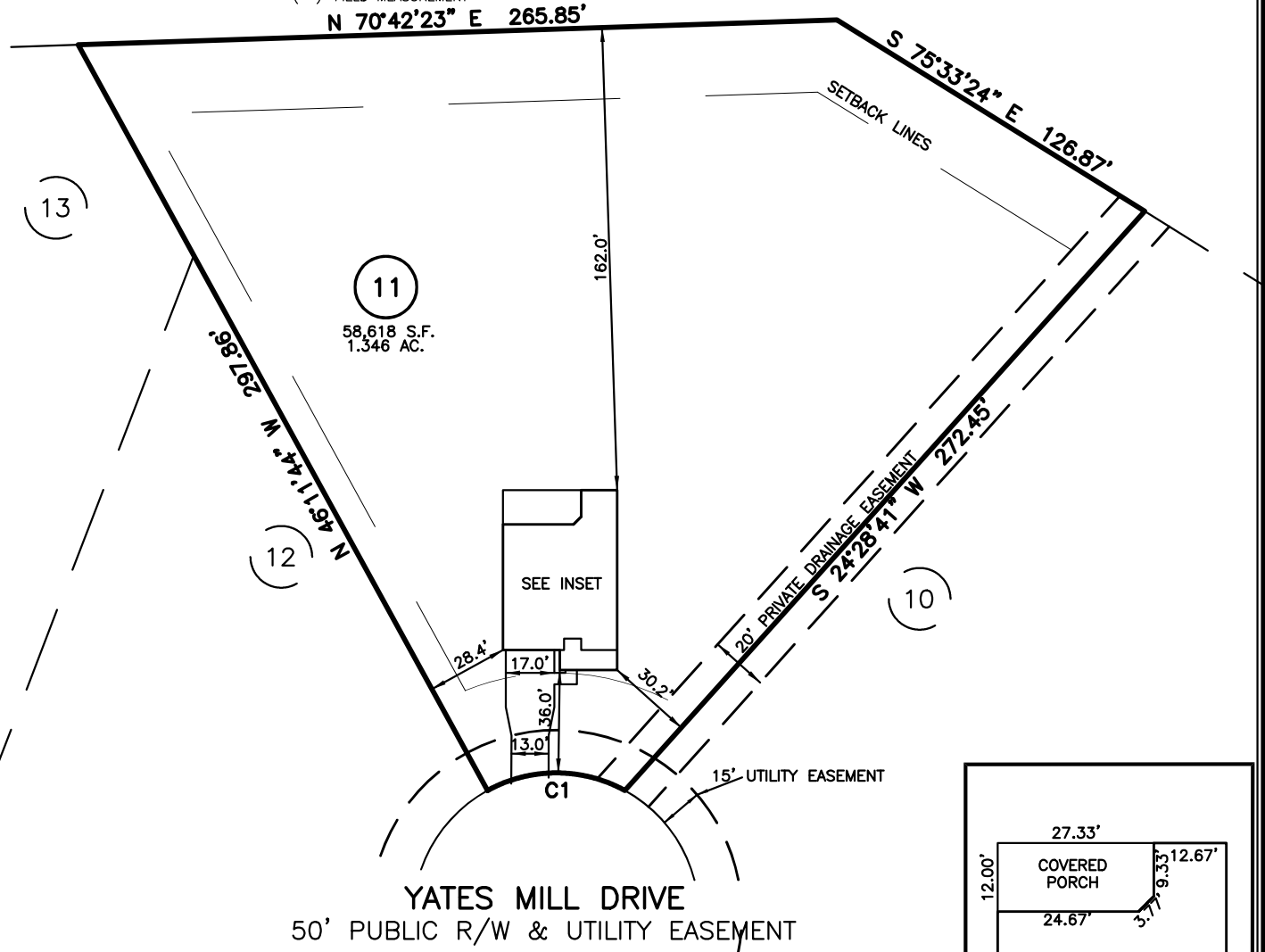


PLOT PLAN FOR  
**NEW HOME INC., LLC**  
 369 YATES MILL DRIVE  
 LOT 11, WOODBRIDGE SOUTH  
 BUCKHORN TOWNSHIP, HARNETT COUNTY, NORTH CAROLINA

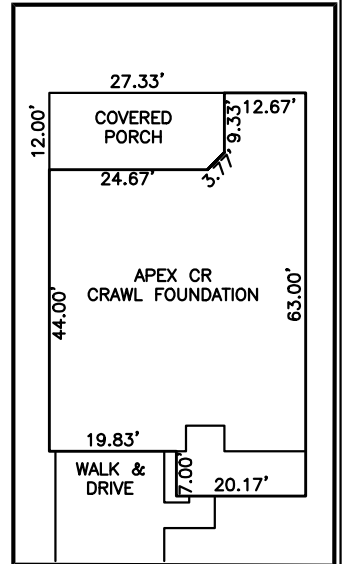
LEGEND

△ AIR CONDITIONER	INV. INVERT
BC BACK OF CURB	IPS IRON PIPE SET
BFP BACK FLOW PREVENTER	IRS IRON ROD SET
○ CLEANOUT	○ LIGHT POLE
□ CURB INLET	MNS MAGNETIC NAIL SET
DHS DRILL HOLE SET	○ MANHOLE SANITARY SEWER
EDM EXISTING CONCRETE MONUMENT	○ MANHOLE STORM SEWER
EDH EXISTING DRILL HOLE	OHV OVERHEAD WIRES
EIS EXISTING IRON STAKE	PKS PK NAIL SET
EIP EXISTING IRON PIPE	PNS POINT NOT SET
EM ELECTRIC METER	RRS RAIL ROAD SPIKE
EPK EXISTING PK NAIL	TELEPHONE PEDESTAL
ES ELECTRIC STUB	TRANSFORMER
FLARED END SECTION	CABLE TV PEDESTAL
○ FIRE HYDRANT	UTILITY POLE
○ FIBER OPTIC PEDESTAL	○ WATER METER
○ GAS METER	○ WATER VALVE
→ GUY	○ YARD INLET
	( ) FIELD MEASUREMENT

OPEN SPACE



NUM	RADIUS	ARC	DELTA	CHORD BRG	CHORD
C1	50.00'	50.22'	57°32'34"	N 72°34'33" E	48.13'



INSET: SCALE: 1"=30'

IMPERVIOUS SURFACES	
HOUSE	2,060 S.F.
WALK & DRIVE	710 S.F.
PORCH	330 S.F.
TOTAL	3,100 S.F.
MAX. IMPERVIOUS	4,000 S.F.

SETBACK INFO	
FRONT:	35'
REAR:	25'
SIDES:	10'
CORNER SIDE:	20'



SCALE: 1" = 60'

REFERENCES:  
 P.B. 2023, PGS 92-94

- NOTES
1. THIS SURVEY SUBJECT TO ANY FACTS THAT MAY BE DISCLOSED BY A FULL AND ACCURATE TITLE SEARCH.
  2. THIS MAP MAY NOT BE A CERTIFIED SURVEY AND HAS NOT BEEN REVIEWED BY A LOCAL GOVERNMENT AGENCY FOR COMPLIANCE WITH ANY APPLICABLE LAND DEVELOPMENT REGULATIONS AND HAS NOT BEEN REVIEWED FOR COMPLIANCE WITH RECORDING REQUIREMENTS FOR PLATS.

PLOT PLAN  
 PRELIMINARY PLAT- NOT FOR RECORDATION,  
 CONVEYANCE OR SALES

DATE: JUNE 5, 2023

REV CODE: 1.FLIP, 2.PLAN, 3.ROTATE, 4.MOVE, 5.SS  
 6.SEVERAL OF ABOVE, 7.LAND FEATURE, 8. OTHER

F.B. \_\_\_\_\_

**RWK, PA**  
**ENGINEERING ~ SURVEYING**  
 CORPORATE LICENSE: C-1771  
 101 W. MAIN ST., SUITE 202  
 GARNER, NC 27529  
 PHONE (919) 779-4854  
 FAX (919) 779-4056