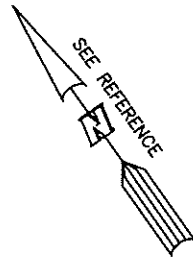
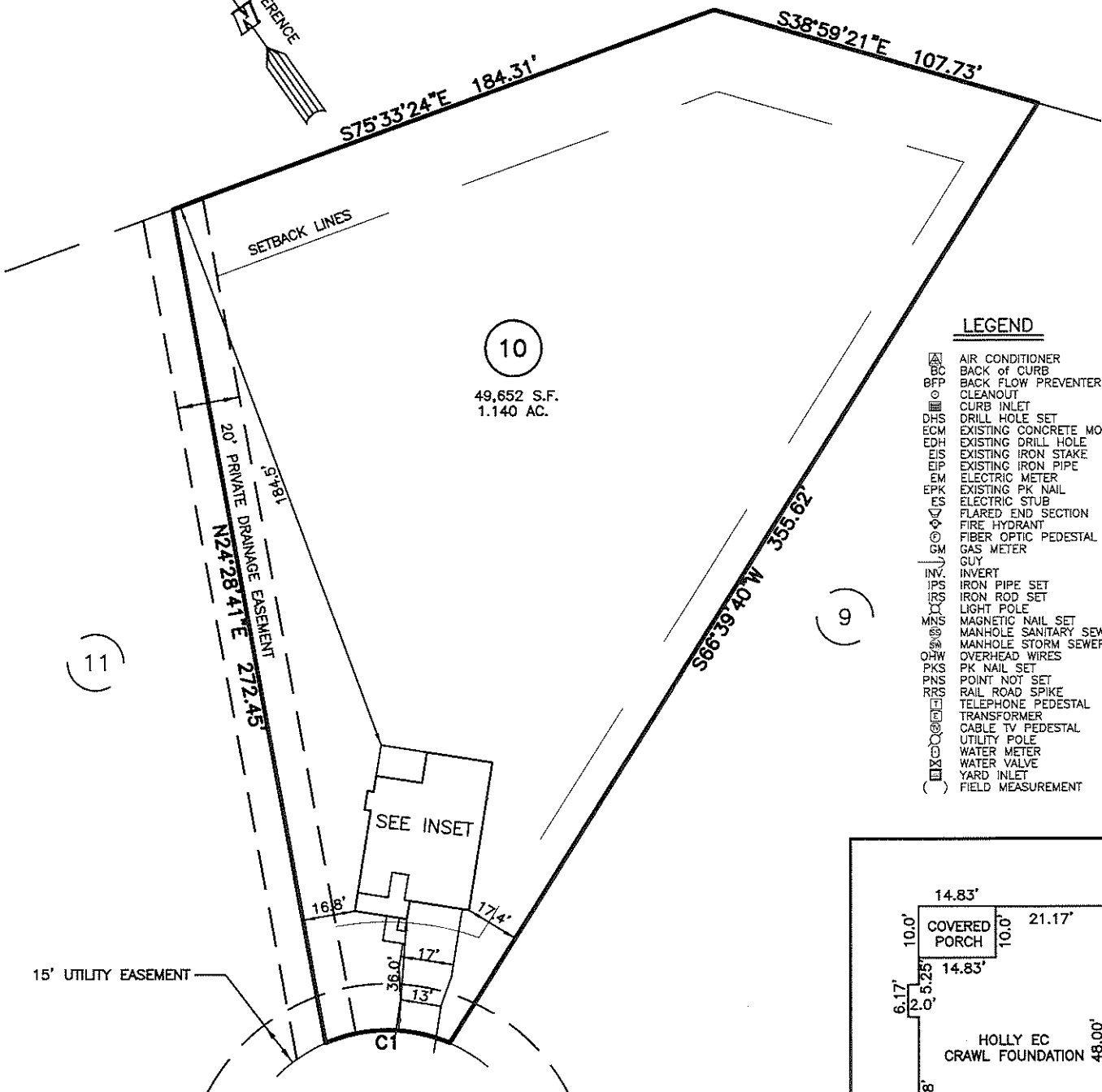


PLOT PLAN FOR  
**NEW HOME INC., LLC**  
 370 YATES MILL DRIVE  
 LOT 10, WOODBRIDGE SOUTH  
 BUCKHORN TOWNSHIP, HARNETT COUNTY, NORTH CAROLINA

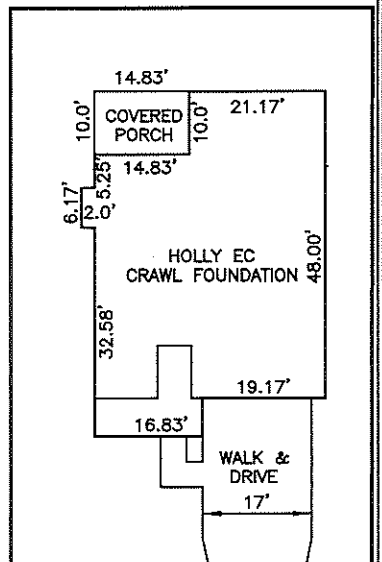


OPEN SPACE



**LEGEND**

- ⊠ AIR CONDITIONER
- ⊠ BACK OF CURB
- ⊠ BFP BACK FLOW PREVENTER
- CLEANOUT
- ⊠ CURB INLET
- ⊠ DRILL HOLE SET
- ⊠ EDM EXISTING CONCRETE MONUMENT
- ⊠ EDH EXISTING DRILL HOLE
- ⊠ EIS EXISTING IRON STAKE
- ⊠ EIP EXISTING IRON PIPE
- ⊠ EM ELECTRIC METER
- ⊠ EPK EXISTING PK NAIL
- ⊠ ES ELECTRIC STUB
- ⊠ FLS FLARED END SECTION
- ⊠ FH FIRE HYDRANT
- ⊠ FOP FIBER OPTIC PEDESTAL
- ⊠ GM GAS METER
- GUY
- INV. INVERT
- ⊠ IPS IRON PIPE SET
- ⊠ IRS IRON ROD SET
- ⊠ LP LIGHT POLE
- ⊠ MNS MAGNETIC NAIL SET
- ⊠ MS MANHOLE SANITARY SEWER
- ⊠ MSW MANHOLE STORM SEWER
- ⊠ OHW OVERHEAD WIRES
- ⊠ PKS PK NAIL SET
- ⊠ PNS POINT NOT SET
- ⊠ RRS RAIL ROAD SPIKE
- ⊠ TP TELEPHONE PEDESTAL
- ⊠ TR TRANSFORMER
- ⊠ CTV CABLE TV PEDESTAL
- ⊠ UP UTILITY POLE
- ⊠ WM WATER METER
- ⊠ WV WATER VALVE
- ⊠ YI YARD INLET
- ( ) FIELD MEASUREMENT



INSET: SCALE: 1"=30'

CURVE	RADIUS	ARC LENGTH	CHORD LENGTH	CHORD BEARING	DELTA ANGLE
C1	50.00'	40.84'	39.71'	S55°15'21" E	46°47'39"

IMPERVIOUS SURFACES	
HOUSE	1,700 S.F.
WALK & DRIVE	750 S.F.
PORCH	150 S.F.
TOTAL	2,600 S.F.
MAX. IMPERVIOUS	4,000 S.F.

SETBACK INFO	
FRONT:	35'
REAR:	25'
SIDES:	10'
CORNER SIDE:	20'



SCALE: 1" = 50'

**NOTES**

- THIS SURVEY SUBJECT TO ANY FACTS THAT MAY BE DISCLOSED BY A FULL AND ACCURATE TITLE SEARCH.
- THIS MAP MAY NOT BE A CERTIFIED SURVEY AND HAS NOT BEEN REVIEWED BY A LOCAL GOVERNMENT AGENCY FOR COMPLIANCE WITH ANY APPLICABLE LAND DEVELOPMENT REGULATIONS AND HAS NOT BEEN REVIEWED FOR COMPLIANCE WITH RECORDING REQUIREMENTS FOR PLATS.

**REFERENCES:**

P.B. 2023, PGS 92-94

PLOT PLAN  
 PRELIMINARY PLAT- NOT FOR RECORDATION,  
 CONVEYANCE OR SALES

REV CODE: 1.FLUP, 2.PLAN, 3.ROTATE, 4.MOVE, 5.SS  
 6.SEVERAL OF ABOVE, 7.LAND FEATURE, 8. OTHER

REV2: JUNE 2, 2023(8)  
 REV1: MAY 31, 2023(6)  
 DATE: MAY 25, 2023

F.B. \_\_\_\_\_

**RWK, PA**  
**ENGINEERING ~ SURVEYING**  
 CORPORATE LICENSE: C-1771  
 101 W. MAIN ST., SUITE 202  
 GARNER, NC 27529  
 PHONE (919) 779-4854  
 FAX (919) 779-4056