

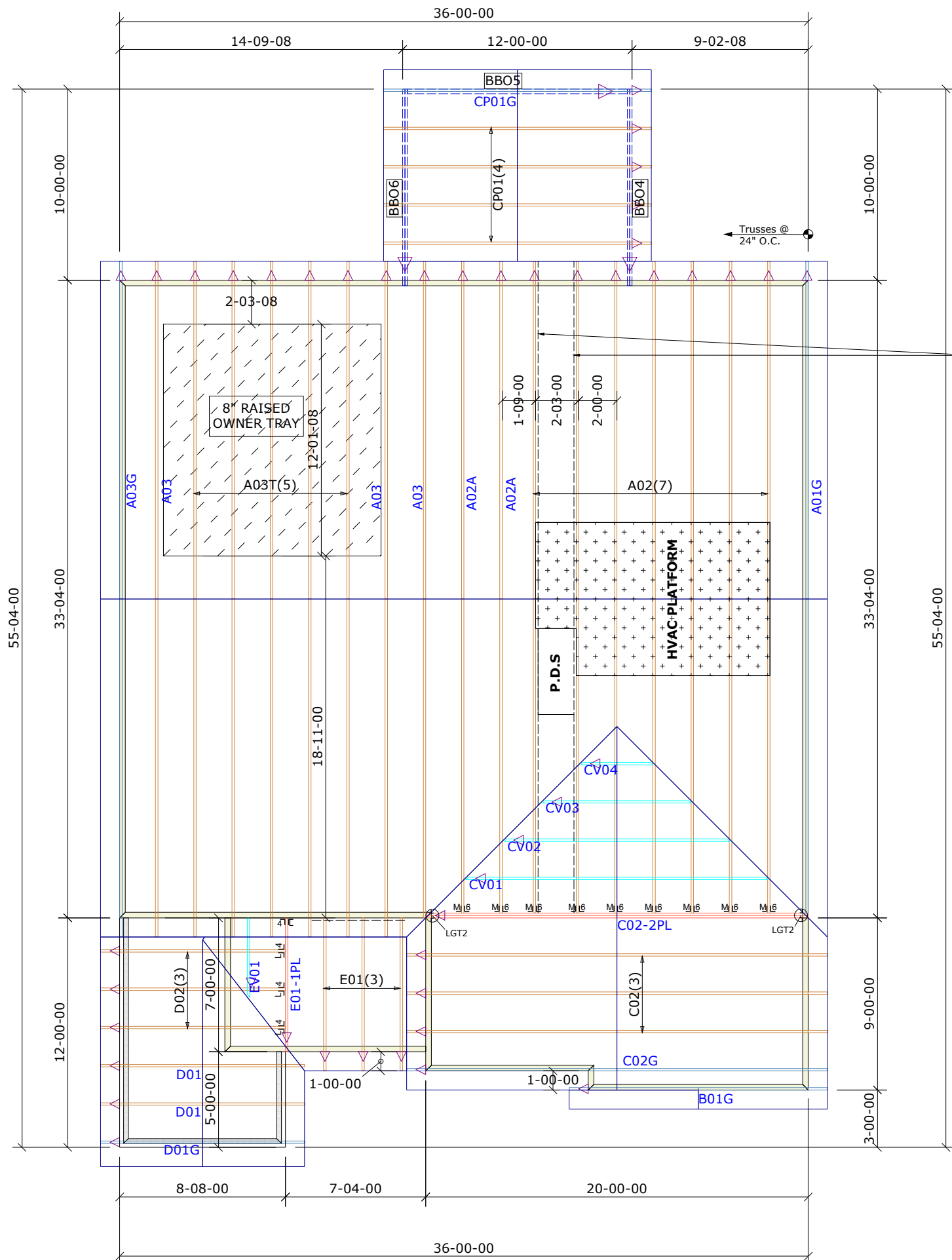
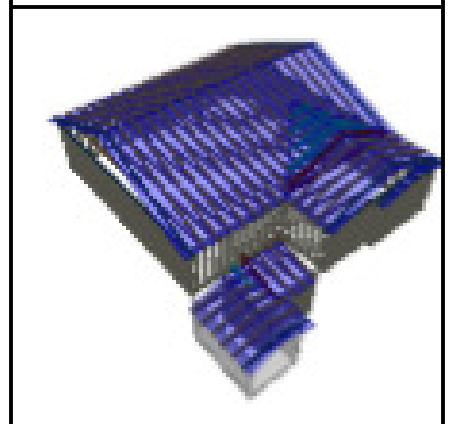
General Notes:
 - Per ANSI/TPI 1-2002 all " Truss to Wall" connections are the responsibility of the Building Designer, not the Truss Manufacturer.
 - Dimensions are Feet-Inches- Sixteenths.
 - Trusses are to be 24" o.c. unless noted otherwise (U.N.O.)
 - Trusses are not designed to support brick U.N.O.
 - Do not cut or modify trusses without first contacting Builders FirstSource.
 - Immediately contact Builders FirstSource if trusses are damaged.

Connection Notes:
 - All hangers are to be Simpson or equivalent U.N.O.
 - Use Manufacturer's specifications for all hanger connections U.N.O.
 - Use 10d x 1 1/2" Nails in hanger connections to single ply roof girder trusses.

Floor notes:
 - Shift truss as required to avoid plumbing traps.
 - Installation Contractor and/or Field Supervisor are to verify all dimensions, trap locations, and options prior to installation

Dimension Notes:
 - Drawing not to scale. Do not scale dimensions

△◁▷ LEFT END OF TRUSS AS SHOWN ON TRUSS DETAIL DRAWINGS ARE INDICATED BY TRIANGLE ICONS.



SPACE TRUSSES @ 2' O.C. UNLESS A WIDE P.D.S IS GOING TO BE INSTALLED. IF A WIDE P.D.S IS USED, FOLLOW SPECIAL TRUSS SPACING AS NOTED ON LAYOUT, AND ATTACH 2X4 LEDGER TO TOP & BOTTOM CHORDS W/12d NAILS @ 16" O.C.

HANGER LIST		ALL TIE DOWNS H2.5A UNLESS NOTED	
4	LUS24	U	4
9	HTU26	M	16
2	LGT2	J	2

SPECIAL ITEMS LIST	
MISC MATERIAL	

MATTAMY HOMES
 REDWOOD ELEV: CRAFTSMAN
 PROVIDENCE CREEK
 --- NC LOT: 23

APPWRIGHT # 3546103
 CODE: IRC 2015
 LOADING:
 T.C.L.L. 20 PSF
 T.C.D.L. 10 PSF
 B.C.L.L. 0 PSF
 B.C.D.L. 10 PSF

DESIGNED BY: ABS
 LAYOUT: ---
 L/O DATE: 5/24/2023

REVISION HISTORY		WIND:	
REV1:	XX/XX/XX	M.P.H.	115 MPH
REV2:	XX/XX/XX	EXPOSURE CATEGORY	
REV3:	XX/XX/XX	B (WOODED AREAS/OTHERS)	

PICK TICKET: --- JOB NO: ---
 SALES NO: --- ACCT NO: ---

HATCH LEGEND	
	ATTIC ROOM
	VOLUME CEILING
	STICK FRAMING