

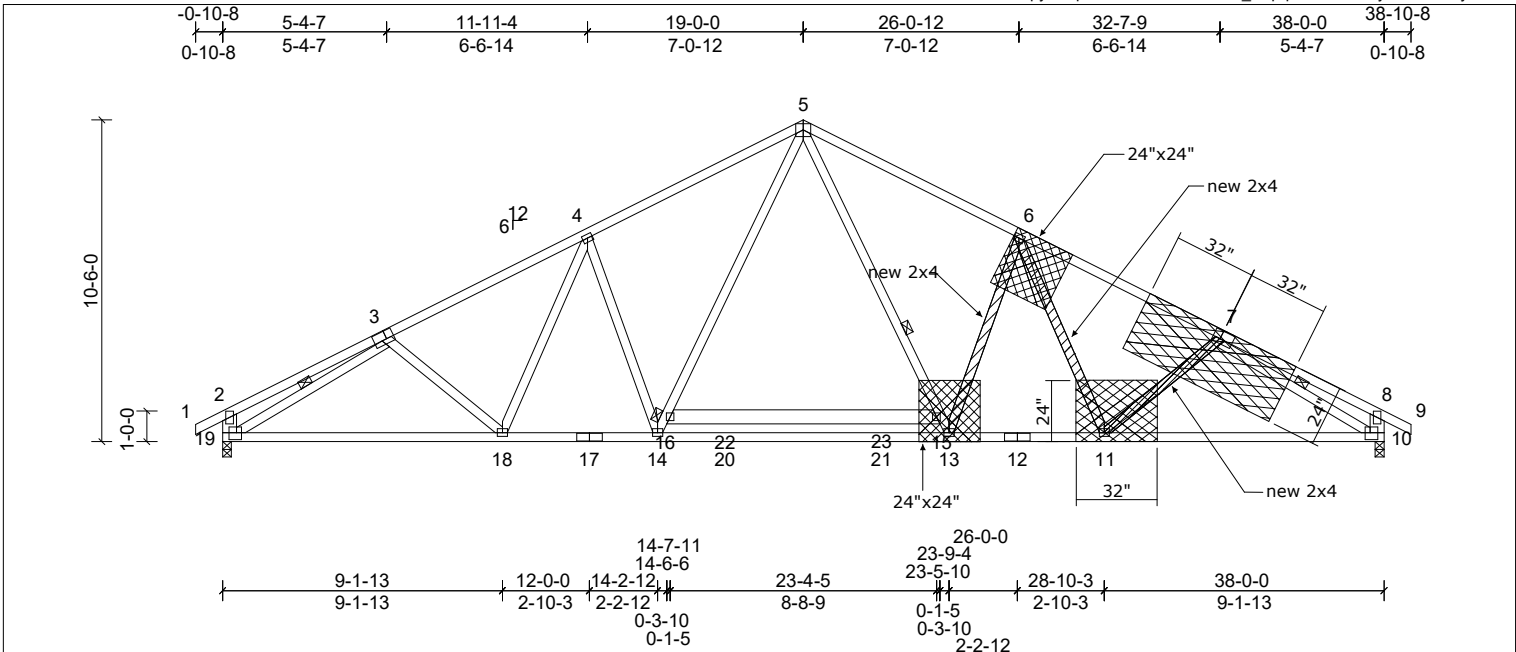
Job 72320918REP1	Truss A2	Truss Type Truss	Qty 5	Ply 1	PBS/HOLLY CRAFTSMAN LH RF Job Reference (optional)
---------------------	-------------	---------------------	----------	----------	---

UFP Mid Atlantic LLC, 5631 S. NC 62, Burlington, NC, Kelly Langley

Run: 8.62 S Sep 22 2022 Print: 8.620 S Sep 22 2022 MiTek Industries, Inc. Thu Oct 26 11:52:57

Page: 1

ID:zR4vECcIS1ZO?4uXVzNAlpyMEqf-XwQaWtuBb5GySnC_VFpquZWC1X1Pyc3zFOWLryPZWa



Repair to replace web 6-13, 6-11, and 7-11 as shown

Cut and fit tight new 2x4 SP or SPF No.2 as shown
 Attach 1/2" Plywood or 7/16" OSB (APA Rated Sheathing Exposure 1) gusset
 to both sides of truss as shown with two rows of 10d (.131" x 3") nails
 spaced 4" oc in all members from each face, driven through both sheets of plywood.

Plate Offsets (X, Y): [3:0-3-0,0-3-4], [6:0-0-0,0-0-0], [7:0-3-0,0-3-4], [10:0-2-0,0-2-12], [19:0-2-0,0-2-12]

Loading	(psf)	Spacing	2-2-0	CSI	DEFL	in	(loc)	l/defl	L/d	PLATES	GRIP
TCLL (roof)	20.0	Plate Grip DOL	1.15	TC	Vert(LL)	-0.34	13-14	>999	240	MT20	244/190
TCDL	10.0	Lumber DOL	1.15	BC	Vert(CT)	-0.65	13-14	>690	180	MT18HS	244/190
BCLL	0.0 *	Rep Stress Incr	NO	WB	Horz(CT)	0.11	10	n/a	n/a		
BCDL	10.0	Code	IRC2015/TPI2014	Matrix-MSH						Weight: 252 lb	FT = 20%

LUMBER	BRACING
TOP CHORD 2x4 SP SS "Except" T1:2x4 SP No.2	TOP CHORD 2-0-0 oc purlins (3-10-7 max.), except end verticals (Switched from sheeted. Spacing > 2-0-0). Rigid ceiling directly applied or 9-7-10 oc bracing. Except:
BOT CHORD 2x4 SP No.1 "Except" B3:2x6 SP No.2	BOT CHORD
WEBS 2x4 SP No.3 "Except" W1:2x6 SP No.2	WEBS 6-0-0 oc bracing: 15-16 1 Row at midpt
REACTIONS (lb/size) 10=1796/0-3-8, (min. 0-2-2), 19=1796/0-3-8, (min. 0-2-2) Max Horiz 19=170 (LC 8) Max Uplift 10=187 (LC 11), 19=187 (LC 10)	

FORCES	(lb) - Max. Comp./Max. Ten. - All forces 250 (lb) or less except when shown.
TOP CHORD	2-3=476/148, 3-4=2609/598, 4-5=2433/656, 5-6=2433/656, 6-7=2609/598, 7-8=476/148, 2-19=427/217, 8-10=427/217
BOT CHORD	18-19=398/2279, 17-18=236/2233, 14-17=236/2233, 14-20=36/1800, 20-21=36/1800, 13-21=36/1800, 12-13=236/2233, 10-11=398/2279
WEBS	3-19=2305/489, 7-10=2305/489, 4-14=591/345, 14-16=247/788, 5-16=190/988, 5-15=190/988, 13-15=247/788, 6-13=591/345

NOTES (9)

- Unbalanced roof live loads have been considered for this design.
- Wind: ASCE 7-10; Vult=130mph (3-second gust) Vasd=103mph; TCCL=6.0psf; BCCL=6.0psf; h=35ft; Cat. II; Exp B; Enclosed; MWFRS (envelope) exterior zone and C-C Exterior (2) zone; cantilever left and right exposed; end vertical left and right exposed; C-C for members and forces & MWFRS for reactions shown; Lumber DOL=1.60 plate grip DOL=1.60 All plates are MT20 plates unless otherwise indicated.
- This truss has been designed for a 10.0 psf bottom chord live load nonconcurrent with any other live loads.
- * This truss has been designed for a live load of 20.0psf on the bottom chord in all areas where a rectangle 3-06-00 tall by 2-00-00 wide will fit between the bottom chord and any other members, with BCCL = 10.0psf.
- Provide mechanical connection (by others) of truss to bearing plate capable of withstanding 187 lb uplift at joint 19 and 187 lb uplift at joint 10.
- This truss is designed in accordance with the 2015 International Residential Code sections R502.11.1 and R802.10.2 and referenced standard ANSI/TPI 1.
- Graphical purlin representation does not depict the size or the orientation of the purlin along the top and/or bottom chord.
- This repair has been prepared based on information and use conditions supplied by client. Designer has made a good faith effort to outline damage and repair conditions as reported by client. When actual field conditions do not approximate those indicated on this drawing, client shall immediately inform the engineer and refrain from applying the repair.



This design is based upon parameters shown, and is for an individual building component to be installed and loaded vertically. Applicability of design parameters and proper incorporation of component is responsibility of the Building Designer. Building Designer shall verify all design information on this sheet for conformance with conditions and requirements of the specific building and governing codes and ordinances. Building Designer accepts responsibility for the correctness or accuracy of the design information as it may relate to a specific building. Certification is valid only when truss is fabricated by a UFPI plant. Bracing shown is for lateral support of truss members only and does not replace erection and permanent bracing. Refer to Building Component Safety Information (BCSI) for general guidance regarding storage, erection and bracing available from SBCA and Truss Plate Institute.

