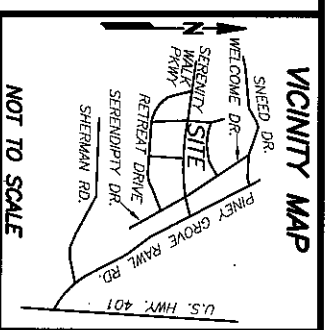


CURVE TABLE						
CURVE	DELTA	RADIUS	ARC	CHORD	TANGENT	CHORD BRG
C1	3°06'51"	900.00'	48.92'	48.91'	24.47'	N 74°37'56" E

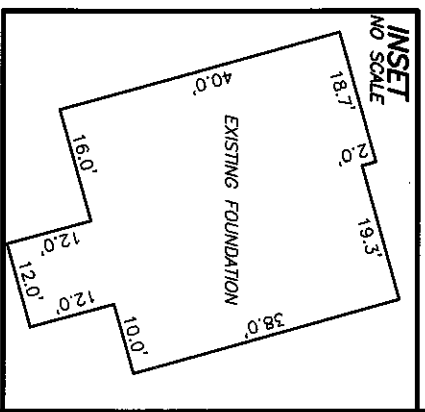
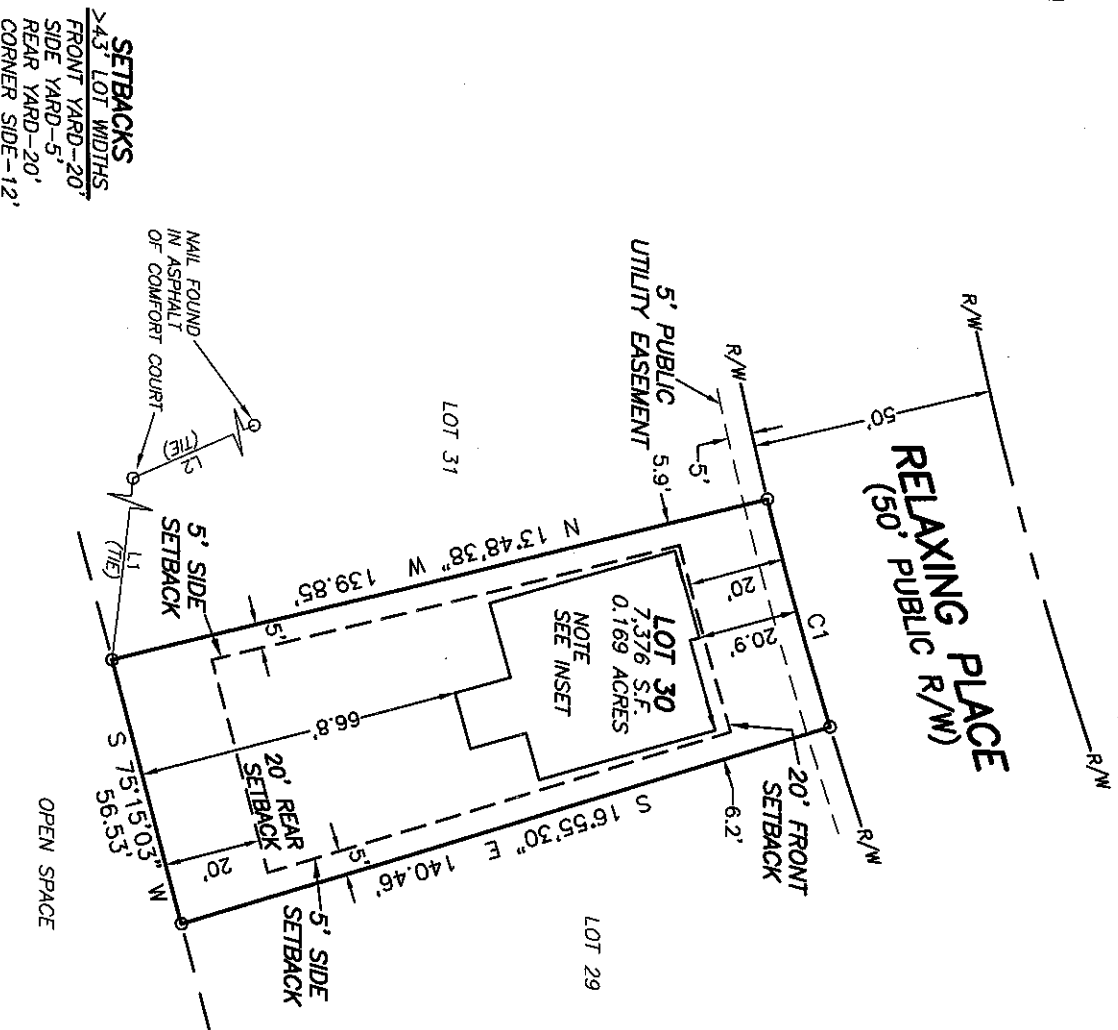
LINE TABLE		
LINE	BEARING	DISTANCE
L1	N 83°20'01" W	325.96'
L2	N 23°34'04" W	110.25'



NOT TO SCALE

- REFERENCES:
- D.B. 4165, PG. 506
PIN 0655-23-3789.000
PID 08065501 0032
 - D.B. 4109, PG. 612

N.C. GRID NORTH NAD83 (2011)
P.B. 2022, PG. 419-433

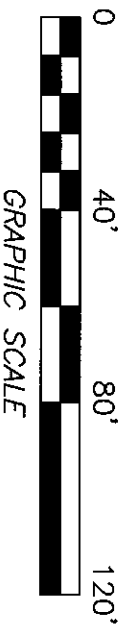


- NOTES:
- ALL EASEMENTS, RIGHTS OF WAY AND BOUNDARY INFORMATION TAKEN FROM P.B. 2022, PG 419-433 UNLESS OTHERWISE NOTED.
 - PROPERTY IS SUBJECT TO ALL EASEMENTS AND RESTRICTIONS OF RECORD. NO TITLE EXAMINATION HAS BEEN DONE BY ROBINSON & PLANTE, P.C.

NOTE:
RATIO OF PRECISION IS 1:110,000±, ENCLOSURE WAS DISTRIBUTED BY THE COMPASS METHOD. THE DISTANCES ON THIS MAP ARE ADJUSTED HORIZONTAL GROUND UNLESS NOTED OTHERWISE. ALL AREAS ARE CALCULATED BY COORDINATE COMPUTATION.

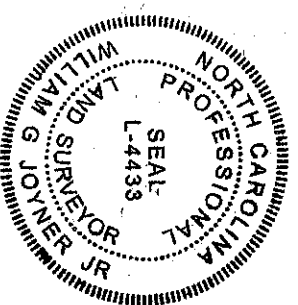
LOT 30 SERENITY SUBDIVISION
PHASE 1
45 RELAXING PLACE
HARNETT COUNTY
FUQUAY-VARINA, N.C. 27526

REFERENCE: PLAT BOOK 2022 PAGE 419-433.



FILE: STA10T30PD

I CERTIFY THAT THIS MAP WAS DRAWN UNDER MY SUPERVISION FROM AN ACTUAL SURVEY MADE UNDER MY SUPERVISION. DESCRIPTION RECORDED IN REFERENCES AS SHOWN; THAT THE BOUNDARIES NOT SURVEYED ARE INDICATED AS DRAWN FROM INFORMATION IN PRECISION IS 1:110,000±; AND THAT THIS MAP MEET THE REQUIREMENTS OF THE STANDARDS OF PRACTICE FOR LAND SURVEYING IN NORTH CAROLINA (21 NCAC 56.16000), THIS 31st DAY OF JULY 2023.
Professional Land Surveyor L-4433



ROBINSON & PLANTE PC
LAND SURVEYING
C-2687
970 TRINITY ROAD
RALEIGH, N.C. 27607
PHONE (919) 859-6030
FAX (919) 859-6032

DATE: 7-28-23

SCALE: 1"=40'