

**Engineering Associates, P.A.**  
**STRUCTURAL ENGINEERS**  
 License No. C-3870  
 318 W Millbrook Rd. Unit 201  
 Raleigh, North Carolina 27609  
 Phone (919) 844-1661

**STRUCTURAL NOTES**

FLOOR JOISTS, SUPPORT BEAMS BELOW, FOUNDATION AND FOOTINGS HAVE BEEN ENGINEERED TO SUPPORT A 40# LIVE LOAD IN THE ROOM LABELED "UNFINISHED STORAGE #1". BUILDER IS PERMITTED TO FINISH THIS AREA WITH NO STRUCTURAL CHANGES.

TRIPLE A HOMES		REV #	REF PROJ #	DATE
SCOPE	FINISHING STORAGE			
LOC	16 COTTON FARMS			

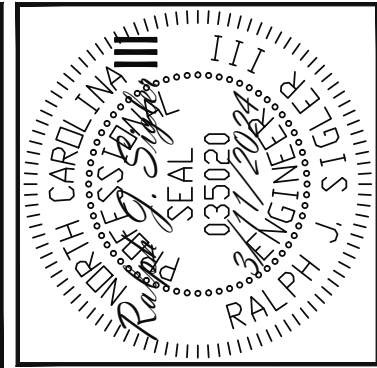
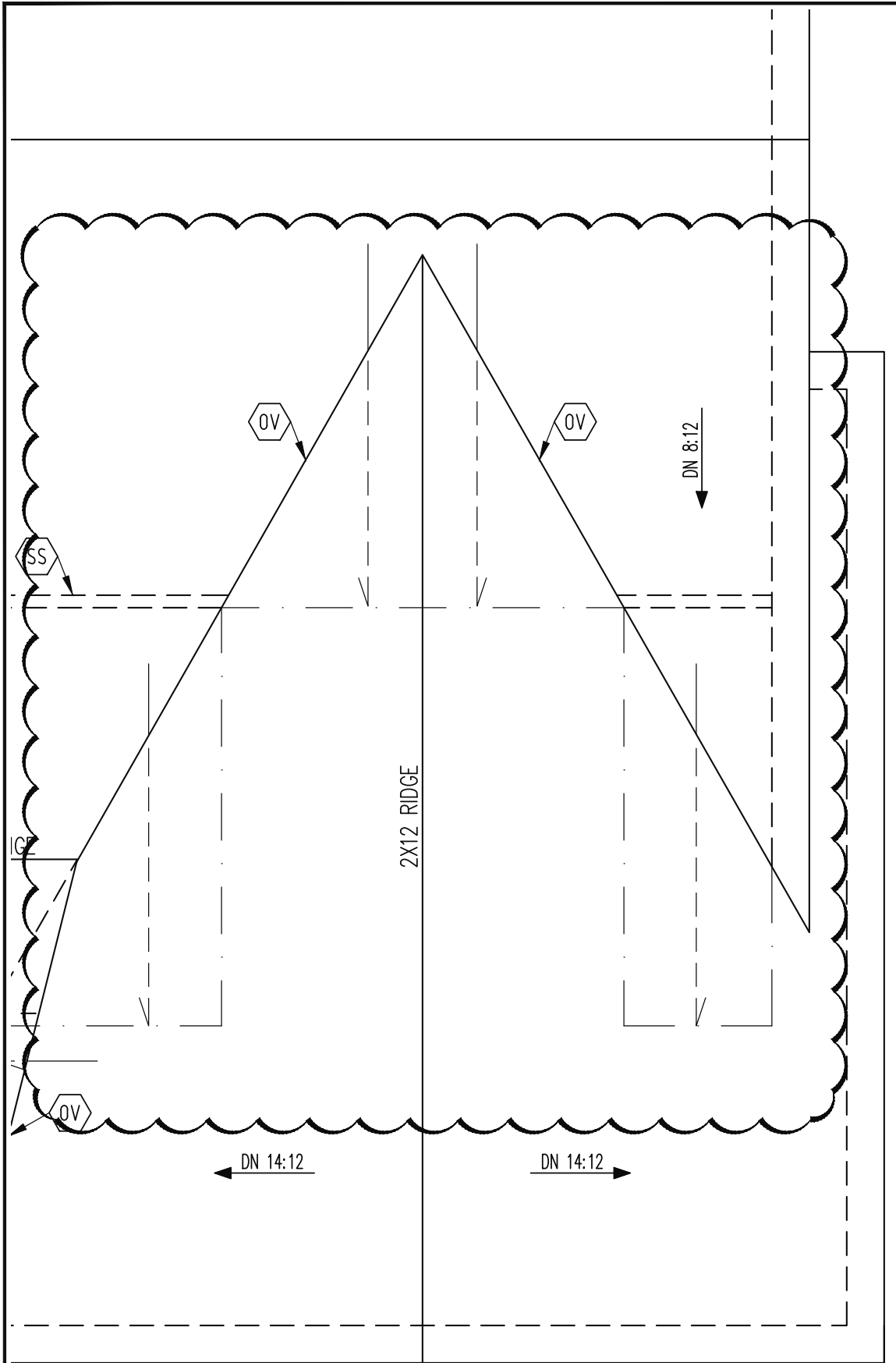
ENG: RJS/CR  
 DATE: 3/11/2024

PARENT  
 23-28-008

PROJECT NO.  
 24-75-278

SHEET NO.  
 SL1  
 1 of 2

**FLOOR PLAN**



**Engineering** STRUCTURAL ENGINEERS  
 License No. C-3870  
 318 W Millbrook Rd. Unit 201  
 Raleigh, North Carolina 27609  
 ASSOCIATES, P.A. Phone (919) 844-1661

TRIPLE A HOMES		REV #	REF PROJ #	DATE
SCOPE	FINISHING STORAGE			
LOC	16 COTTON FARMS			

ENG: RJS/CR  
 DATE: 3/11/2024

PARENT  
 23-28-008

PROJECT NO.  
 24-75-278

SHEET NO.  
 SL2