

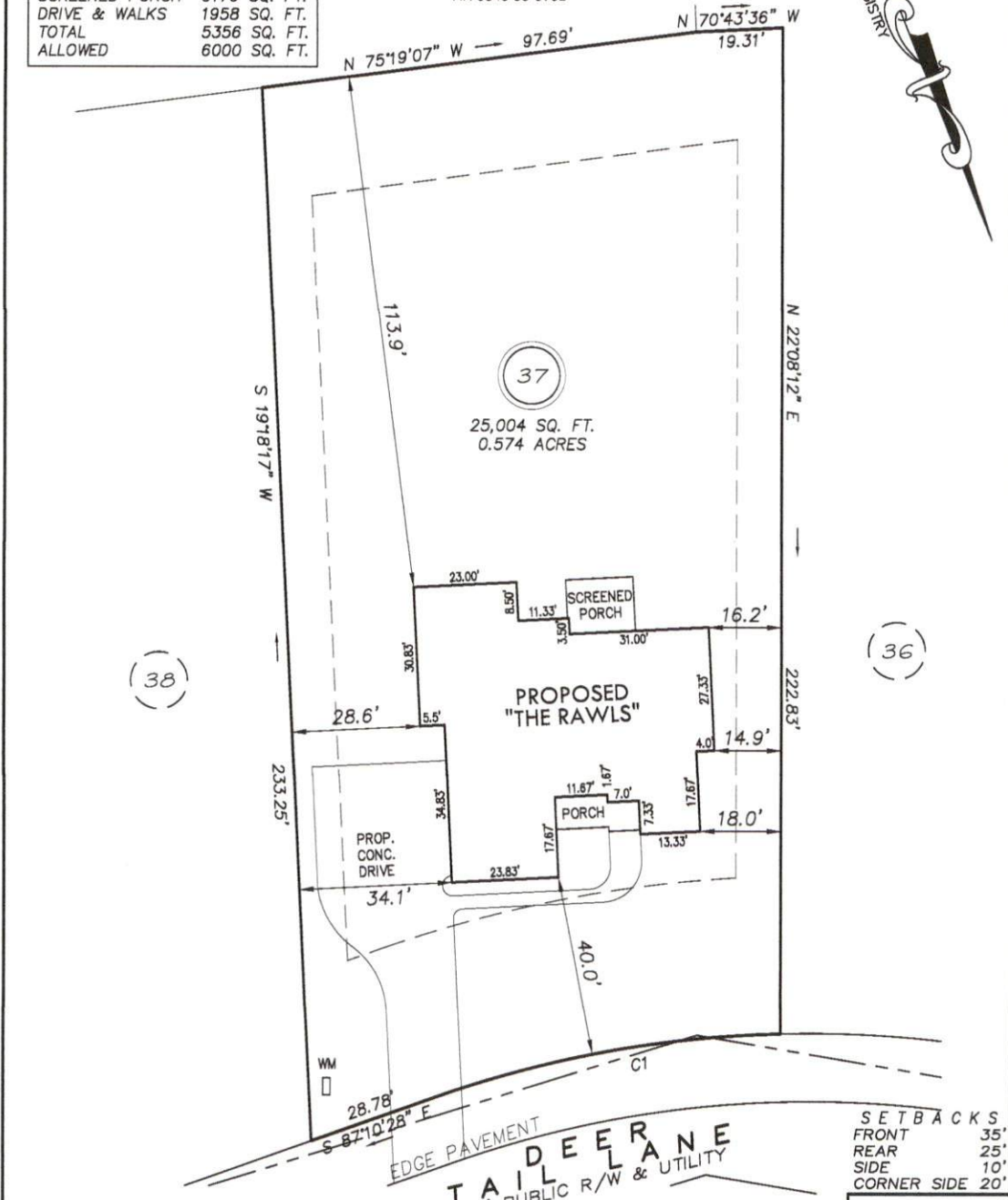
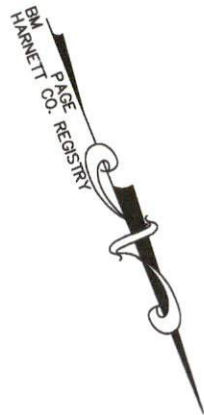
I, MICHAEL P. GRIFFIN, certify that under my direction and supervision this map was drawn from an actual field survey; that the error of closure of the survey as calculated by coordinates is 1: 10,000+; that the area shown hereon was calculated by coordinates.

Witness my hand and seal this day of MONTH 2022.

N/F
R.L. JOHNSON FAMILY
LIMITED PARTNERSHIP
DB 2503 PAGE 668
MAP#2008 - 381
PIN 0643-55-0902

IMPERVIOUS DATA

| | |
|----------------|--------------|
| HOUSE | 3219 SQ. FT. |
| SCREENED PORCH | 0179 SQ. FT. |
| DRIVE & WALKS | 1958 SQ. FT. |
| TOTAL | 5356 SQ. FT. |
| ALLOWED | 6000 SQ. FT. |



SETBACKS

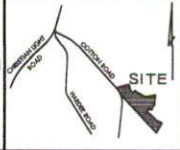
| | |
|-------------|-----|
| FRONT | 35' |
| REAR | 25' |
| SIDE | 10' |
| CORNER SIDE | 20' |

C1 R=255.00' L=79.08' S78°17'26\"E 78.76'

PRELIMINARY
NOT FOR RECORDATION,
SALES OR CONVEYANCE

LEGEND

| | | | |
|-----|---------------------|-----|--------------------|
| EIP | EXISTING IRON PIPE | FES | FLARED END SECTION |
| IPS | IRON PIPE SET | WM | WATER METER |
| R/W | RIGHT OF WAY | CO | CLEAN OUT |
| N/F | NOW OR FORMERLY | FH | FIRE HYDRANT |
| EIS | EXISTING IRON STAKE | CB | CATCH BASIN |



GRIFFIN LAND SURVEYING, INC.
P.O. BOX 148
FUQUAY-VARINA, NC 27528
(919) 567-1963

PLOT PLAN
FOR
NCT SPECIALTY CONTRACTING, INC.
COTTON FARMS
LOT 37
DEER TAIL LANE
FUQUAY VARINA, N.C.
HARNETT COUNTY HECTOR'S CREEK TOWNSHIP

| | |
|-----------------------|-----------------------|
| DRAWN BY MPG | DATE 2/3/23 |
| CHECKED BY MPG | SCALE 1" = 30' |