

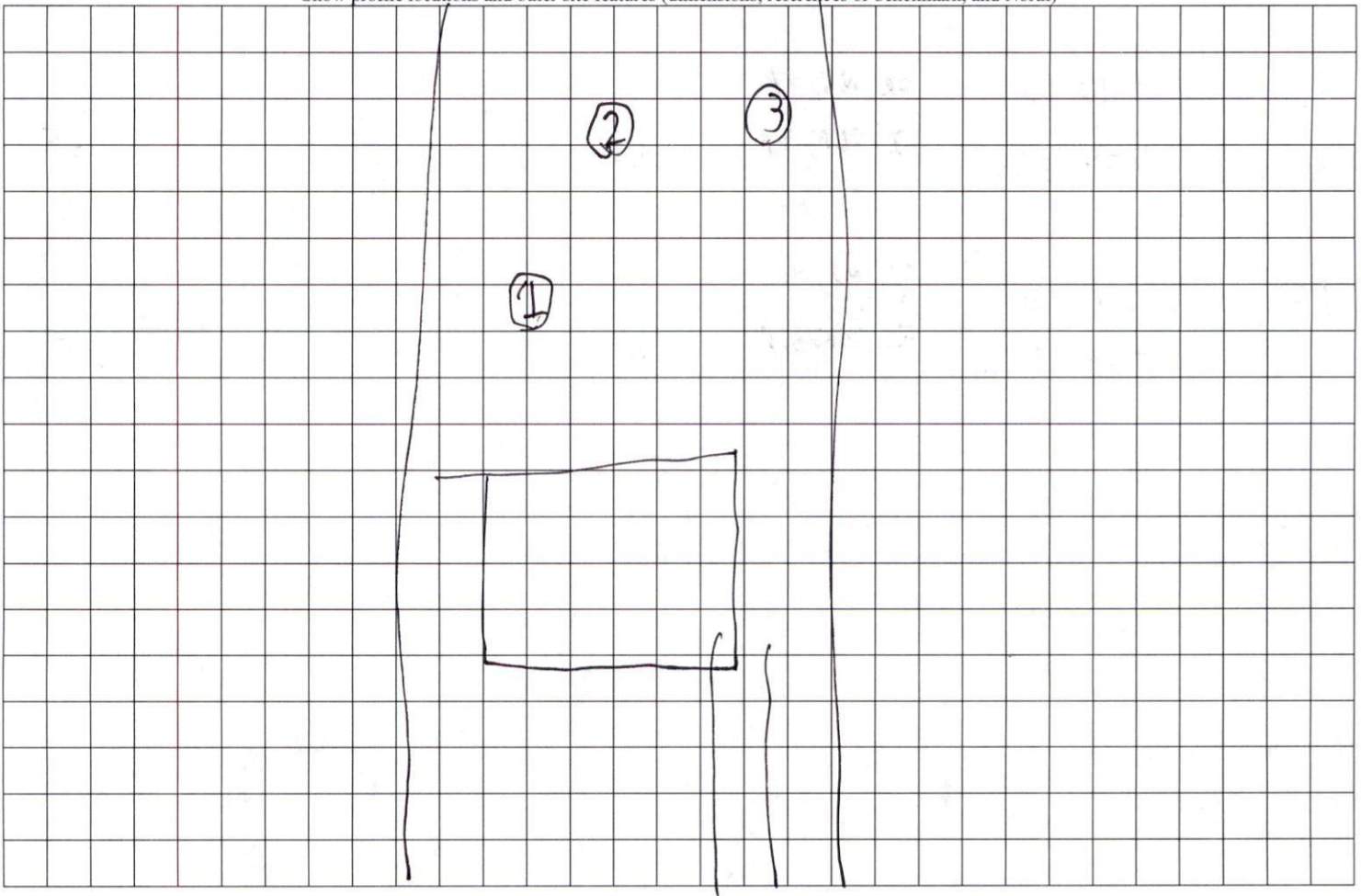
COMMENTS: _____

LANDSCAPE POSITIONS	GROUP	TEXTURES	.1955 LTAR	CONSISTENCE MOIST	WET
R-RIDGE	I	S-SAND	1.2 - 0.8	VFR-VERY FRIABLE FR-FRIABLE	NS-NON-STICKY SS-SLIGHTLY STICKY
S-SHOULDER SLOPE		LS-LOAMY SAND			
L-LINEAR SLOPE	II	SL-SANDY LOAM	0.8 - 0.6	FI-FIRM VFI-VERY FIRM EFI-EXTREMELY FIRM	S-STICKY VS-VERY STICKY
FS-FOOT SLOPE		L-LOAM			
N-NOSE SLOPE	III	SI-SILT	0.6 - 0.3		NP-NON-PLASTIC SP-SLIGHTLY STICKY P-PLASTIC VP-VERY PLASTIC
H-HEAD SLOPE		SIL-SILT LOAM			
CC-CONCLAVE SLOPE		CL-CLAY LOAM			
CV-CONVEX SLOPE		SCL-SANDY CLAY LOAM			
T-TERRACE	IV	SIC-SILTY CLAY	0.4 - 0.1		
FP-FLOOD PLAN		C-CLAY SC-SANDY CLAY			

STRUCTURE
 SG-SINGLE GRAIN
 M- MASSIVE
 CR-CRUMB
 GR-GRANULAR
 SBK-SUBANGULAR BLOCKY
 ABK-ANGULAR BLOCKY
 PL-PLATY
 PR-PRISMATIC

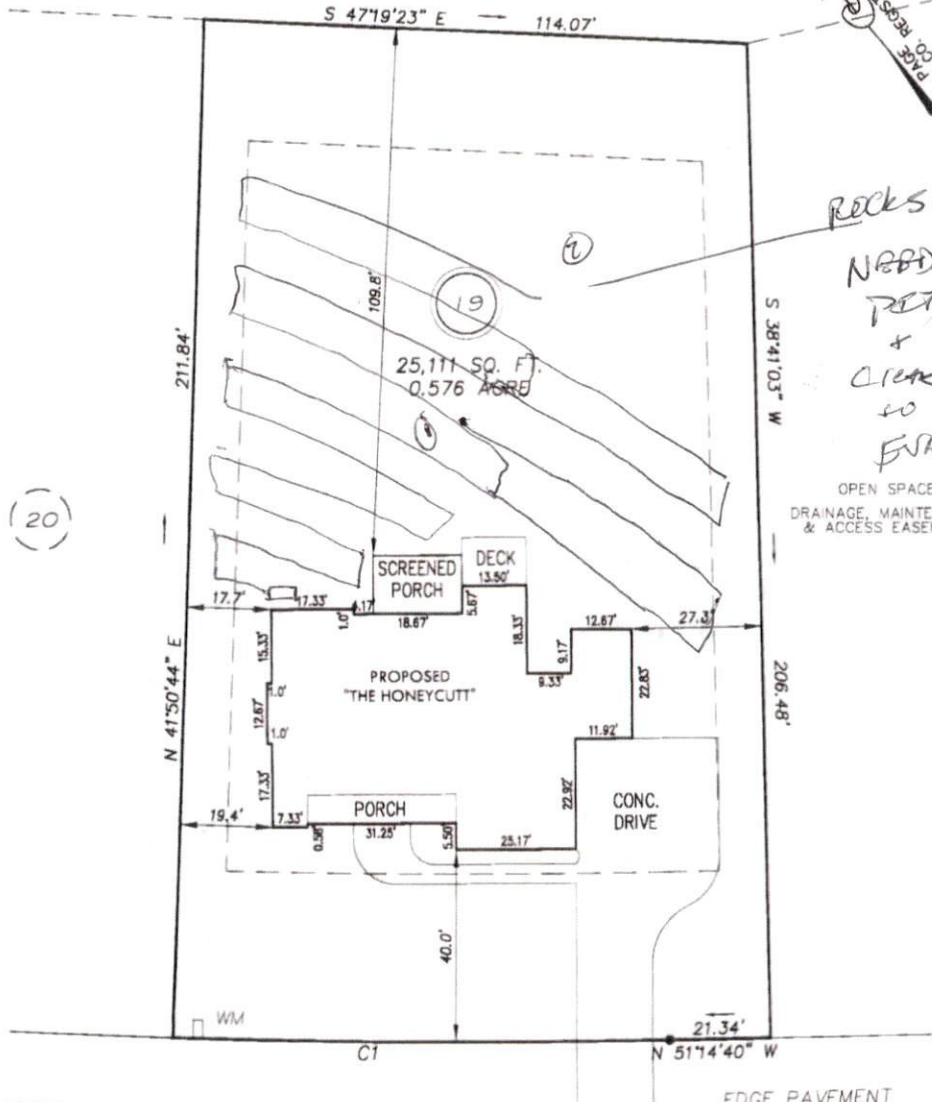
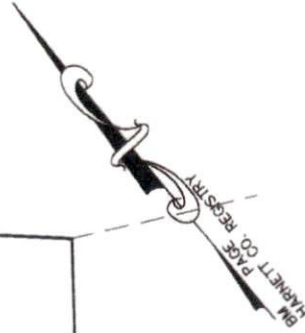
MINERALOGY
 SLIGHTLY EXPANSIVE
 EXPANSIVE

Show profile locations and other site features (dimensions, references or benchmark, and North)



I, MICHAEL P. GRIFFIN, certify that under my direction and supervision this map was drawn from an actual field survey; that the error of closure of the survey as calculated by coordinates is 1:10,000+; that the area shown hereon was calculated by coordinates.
 Witness my hand and seal this day of MONTH 2023.

N/F
 R.L. JOHNSON FAMILY
 LIMITED PARTNERSHIP
 DB 2503 PAGE 668
 MAP#2008 - 381
 PIN 0643-55-0902



ROCKS
 NEEDED
 FOR
 CLEAR
 TO
 EASE

OPEN SPACE
 DRAINAGE, MAINTENANCE
 & ACCESS EASEMENT

IMPERVIOUS DATA

HOUSE	3190 SQ. FT.
SCREENED PORCH	0224 SQ. FT.
DRIVE & WALKS	1772 SQ. FT.
TOTAL	5186 SQ. FT.
ALLOWED	6000 SQ. FT.

HOOK DRIVE
 50' PUBLIC R/W & UTILITY

SETBACKS

FRONT	35'
REAR	25'
SIDE	10'
CORNER SIDE	20'

C1 R=1975.00' L=104.18' N49°43'59"W 104.17'

LEGEND

- EIP EXISTING IRON PIPE
- IPS IRON PIPE SET
- R/W RIGHT OF WAY
- N/F NOW OR FORMERLY
- EIS EXISTING IRON STAKE
- FES FLARED END SECTION
- WM WATER METER
- CO CLEAN OUT
- FH FIRE HYDRANT
- CB CATCH BASIN



PRELIMINARY
 NOT FOR RECORDATION,
 SALES OR CONVEYANCE

GLS GRIFFIN LAND SURVEYING, INC.
 P.O. BOX 148
 FUQUAY-VARINA, NC 27526
 (919) - 567-1983

PLOT PLAN
 FOR
NCT SPECIALTY CONTRACTING, INC.
 COTTON FARMS
 LOT 19
 HOOK DRIVE
 FUQUAY VARINA, N.C.
 HARNETT COUNTY HECTOR'S CREEK TOWNSHIP

DRAWN BY MPG	DATE 1/31/23
CHECKED BY MPG	SCALE 1" = 30'