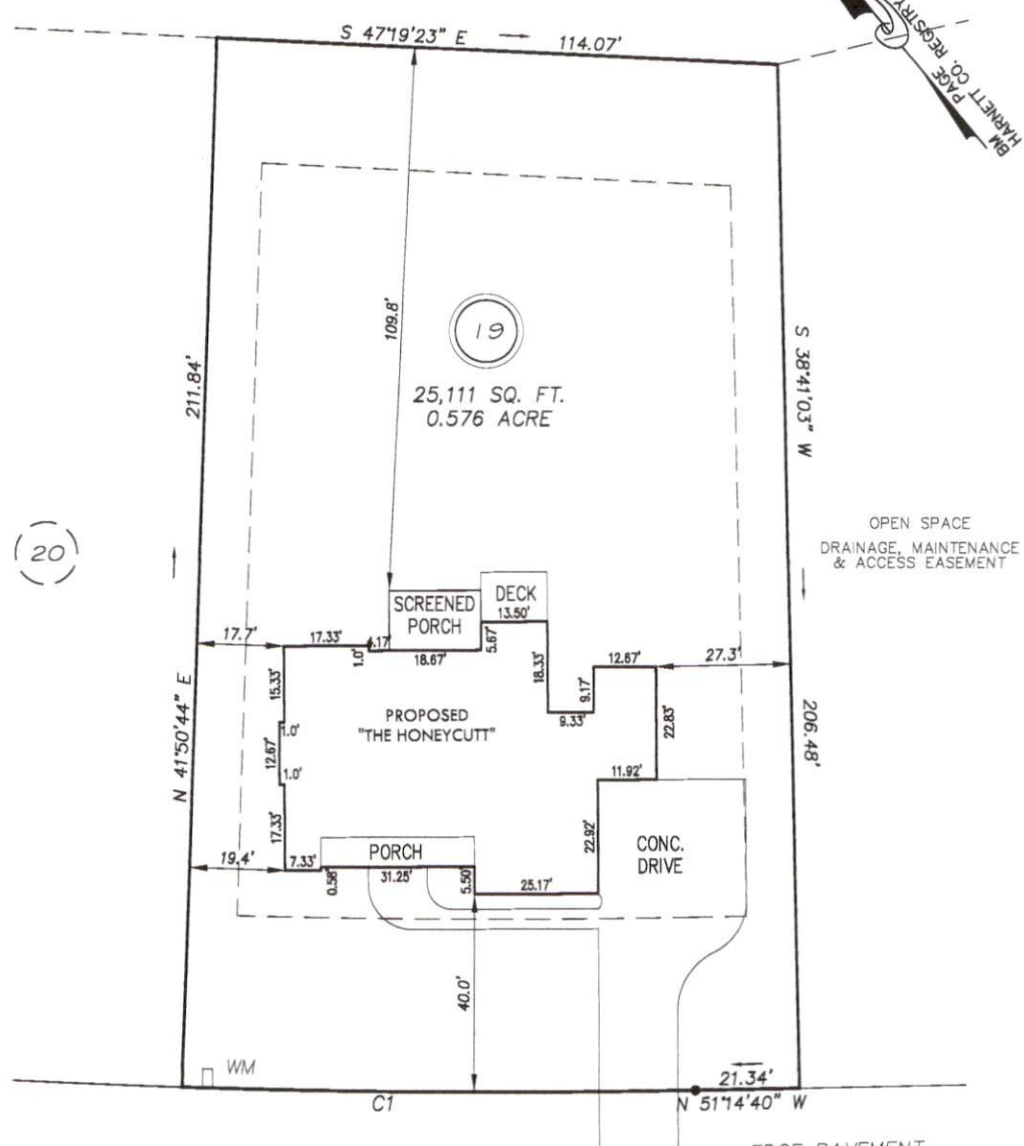
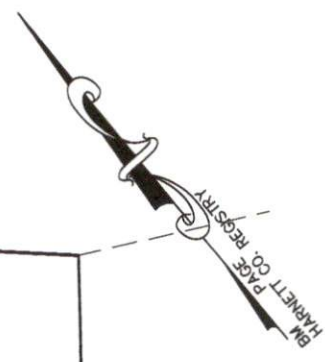


I, MICHAEL P. GRIFFIN, certify that under my direction and supervision this map was drawn from an actual field survey; that the error of closure of the survey as calculated by coordinates is 1:10,000+; that the area shown hereon was calculated by coordinates.
 Witness my hand and seal this day of MONTH 2023.

N/F
 R.L. JOHNSON FAMILY
 LIMITED PARTNERSHIP
 DB 2503 PAGE 668
 MAP#2008 - 381
 PIN 0643-55-0902



IMPERVIOUS DATA

HOUSE	3190 SQ. FT.
SCREENED PORCH	0224 SQ. FT.
DRIVE & WALKS	1772 SQ. FT.
TOTAL	5186 SQ. FT.
ALLOWED	6000 SQ. FT.

HOOK DRIVE
 50' PUBLIC R/W & UTILITY

SETBACKS

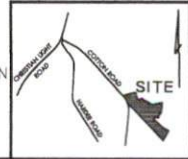
FRONT	35'
REAR	25'
SIDE	10'
CORNER SIDE	20'

C1 R=1975.00' L=104.18' N49°43'59"W 104.17'

PRELIMINARY
 NOT FOR RECORDATION,
 SALES OR CONVEYANCE

LEGEND

EIP	EXISTING IRON PIPE	FES	FLARED END SECTION
IPS	IRON PIPE SET	WM	WATER METER
R/W	RIGHT OF WAY	CO	CLEAN OUT
N/F	NOW OR FORMERLY	FH	FIRE HYDRANT
EIS	EXISTING IRON STAKE	CB	CATCH BASIN



GRiffin LAND SURVEYING, INC.
 P.O. BOX 148
 FUQUAY-VARINA, NC 27526
 (919) - 567 - 1963

PLOT PLAN FOR NCT SPECIALTY CONTRACTING, INC.
 COTTON FARMS

DRAWN BY MPG	DATE 1/31/23
CHECKED BY MPG	SCALE 1" = 30'

LOT 19
 HOOK DRIVE
 FUQUAY VARINA, N.C.
 HARNETT COUNTY HECTOR'S CREEK TOWNSHIP