

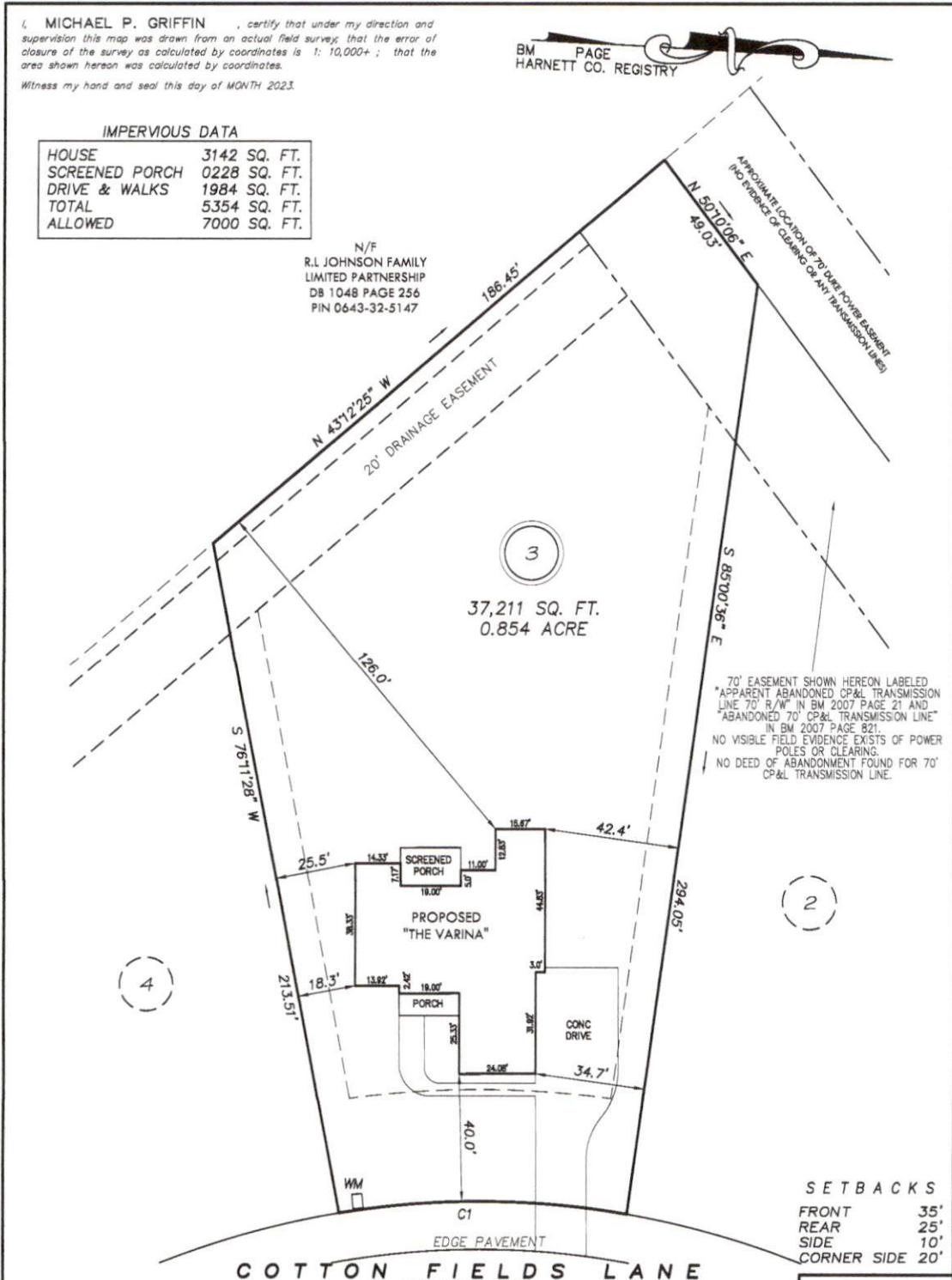
I, **MICHAEL P. GRIFFIN**, certify that under my direction and supervision this map was drawn from an actual field survey; that the error of closure of the survey as calculated by coordinates is 1: 10,000+; that the area shown hereon was calculated by coordinates.  
 Witness my hand and seal this day of MONTH 2023.

BM PAGE  
 HARNETT CO. REGISTRY

**IMPERVIOUS DATA**

HOUSE	3142 SQ. FT.
SCREENED PORCH	0228 SQ. FT.
DRIVE & WALKS	1984 SQ. FT.
TOTAL	5354 SQ. FT.
ALLOWED	7000 SQ. FT.

N/F  
 R.L JOHNSON FAMILY  
 LIMITED PARTNERSHIP  
 DB 1048 PAGE 256  
 PIN 0643-32-5147

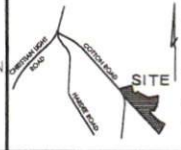


CI R=275.00' L=91.29' S02°46'57"E 90.88'

**PRELIMINARY**  
 NOT FOR RECORDATION,  
 SALES OR CONVEYANCE

**LEGEND**

EIP	EXISTING IRON PIPE	FES	FLARED END SECTION
IPS	IRON PIPE SET	WM	WATER METER
R/W	RIGHT OF WAY	CO	CLEAN OUT
N/F	NOW OR FORMERLY	FH	FIRE HYDRANT
EIS	EXISTING IRON STAKE	CB	CATCH BASIN



**GRiffin LAND SURVEYING, INC.**  
 P.O. BOX 148  
 FUQUAY-VARINA, NC 27526  
 (919) - 567 - 1963

**PLOT PLAN FOR NCT SPECIALTY CONTRACTING, INC.**  
 COTTON FARMS  
 LOT 3  
 COTTON FIELDS LANE  
 FUQUAY VARINA, N.C.  
 HARNETT COUNTY HECTOR'S CREEK TOWNSHIP

DRAWN BY <b>MPG</b>	DATE <b>1/31/23</b>
CHECKED BY <b>MPG</b>	SCALE <b>1" = 40'</b>