

I, MICHAEL P. GRIFFIN, certify that under my direction and supervision this map was drawn from an actual field survey; that the error of closure of the survey as calculated by coordinates is 1: 10,000+; and that the area shown hereon was calculated by coordinates.

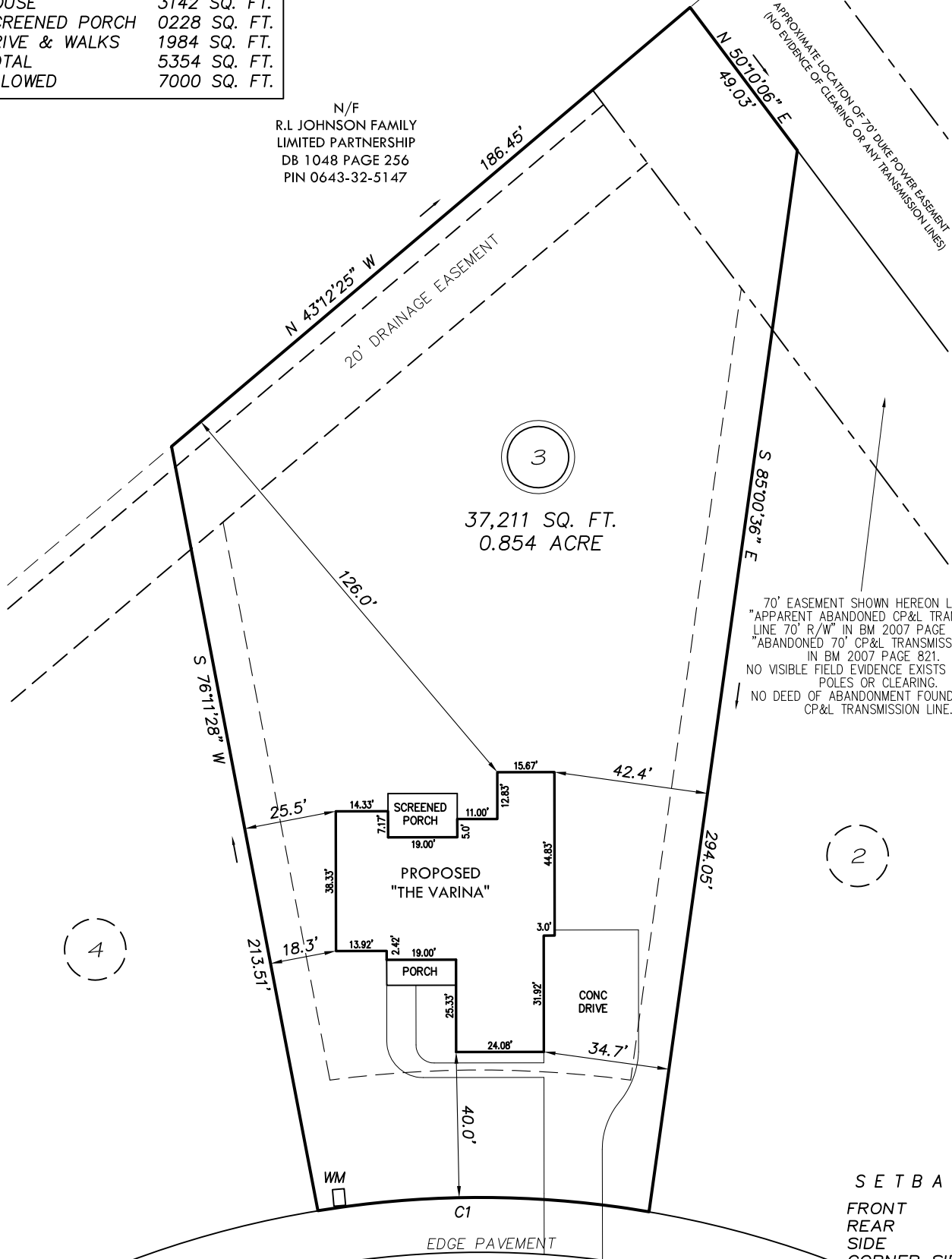
Witness my hand and seal this day of MONTH 2023.

BM PAGE
HARNETT CO. REGISTRY

IMPERVIOUS DATA

HOUSE	3142 SQ. FT.
SCREENED PORCH	0228 SQ. FT.
DRIVE & WALKS	1984 SQ. FT.
TOTAL	5354 SQ. FT.
ALLOWED	7000 SQ. FT.

N/F
R.L JOHNSON FAMILY
LIMITED PARTNERSHIP
DB 1048 PAGE 256
PIN 0643-32-5147



70' EASEMENT SHOWN HEREON LABELED "APPARENT ABANDONED CP&L TRANSMISSION LINE 70' R/W" IN BM 2007 PAGE 21 AND "ABANDONED 70' CP&L TRANSMISSION LINE" IN BM 2007 PAGE 821. NO VISIBLE FIELD EVIDENCE EXISTS OF POWER POLES OR CLEARING. NO DEED OF ABANDONMENT FOUND FOR 70' CP&L TRANSMISSION LINE.

SETBACKS

FRONT	35'
REAR	25'
SIDE	10'
CORNER SIDE	20'

COTTON FIELDS LANE

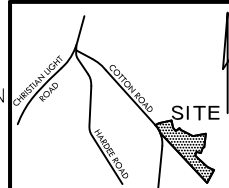
CI R=275.00' L=91.29' S02°46'57"E 90.88'

50' PUBLIC R/W

PRELIMINARY
NOT FOR RECORDATION,
SALES OR CONVEYANCE

LEGEND

EIP	EXISTING IRON PIPE	FES	FLARED END SECTION
IPS	IRON PIPE SET	WM	WATER METER
R/W	RIGHT OF WAY	CO	CLEAN OUT
N/F	NOW OR FORMERLY	FH	FIRE HYDRANT
EIS	EXISTING IRON STAKE	CB	CATCH BASIN



GRIFFIN LAND SURVEYING, INC.

P. O. BOX 148
FUQUAY-VARINA, NC 27526
(919) - 567 - 1963

PLOT PLAN
FOR
NCT SPECIALTY CONTRACTING, INC.
COTTON FARMS

LOT 3
COTTON FIELDS LANE
FUQUAY VARINA, N.C.
HARNETT COUNTY HECTOR'S CREEK TOWNSHIP

DRAWN BY MPG

DATE 1/31/23

CHECKED BY MPG

SCALE 1" = 40'