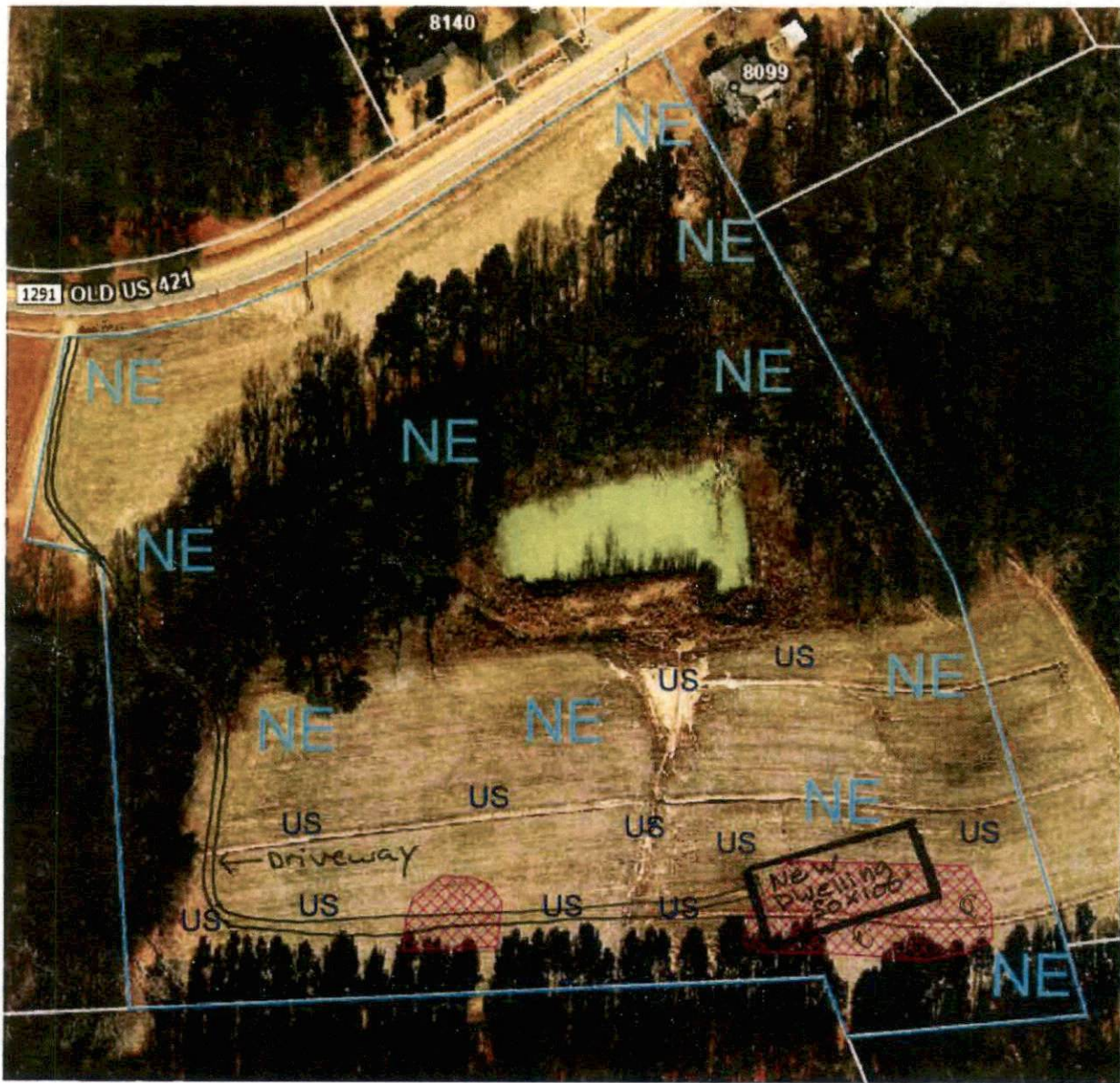


Preliminary Soils Evaluation
 Gurkin
 ~13 acres - Old US 421 - Broadway NC
 Harnett County (PIN# 0610-35-4842)
 April 3, 2023

*Not a Survey
 (sketched from Harnett County GIS)




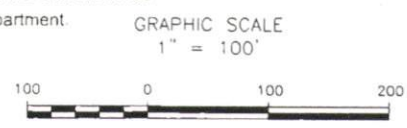
0-6 s2
 6-36 c
 10' 1/2' b
 e 33
 0-7 s2
 7-36 c
 code 33'
 14
 0-16 s2
 16-18 s2
 18-36" c
 E 1/2 36'

pump
 1x375'
 e 18"

- *Preliminary Soils Evaluation
- *Soil boundary was sketched onto a preliminary map of the property taken from public records.
- *Not a Survey.
- *Septic system setbacks listed below for new lots.
 - 1) 10' from property lines.
 - 2) 100' from wells for primary and repair systems.
 - 3) 50' from surface waters (streams, ponds, lakes).
- *Any mechanical disturbances such as grading, cutting and filling of the suitable soil areas can render areas unsuitable for future septic systems.
- *See accompanying report for additional information.
- *Due to Soil Variability, Adams soil consulting cannot guarantee that the areas shown as suitable will be permitted by the local Health Department.

Legend

	Areas contain soils with 24 inches or more of useable material and have potential for conventional, modified conventional, LSP or ultra-shallow conventional septic systems
US	Unsuitable Areas for conventional type septic systems
NE	Areas not evaluated



Adams
 Soil Consulting
 919-414-6761
 Project #1056