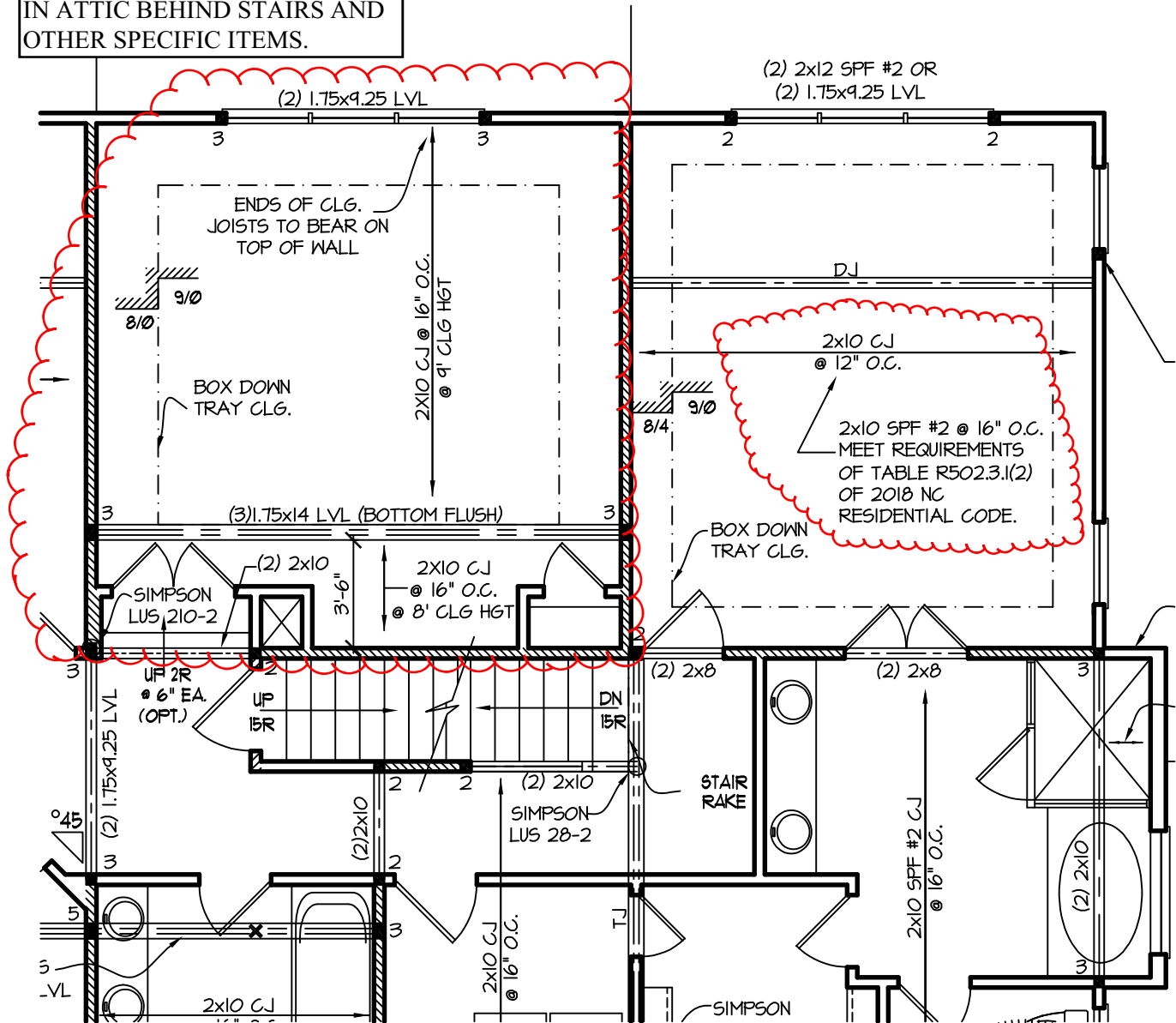
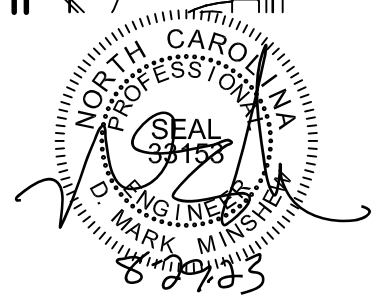


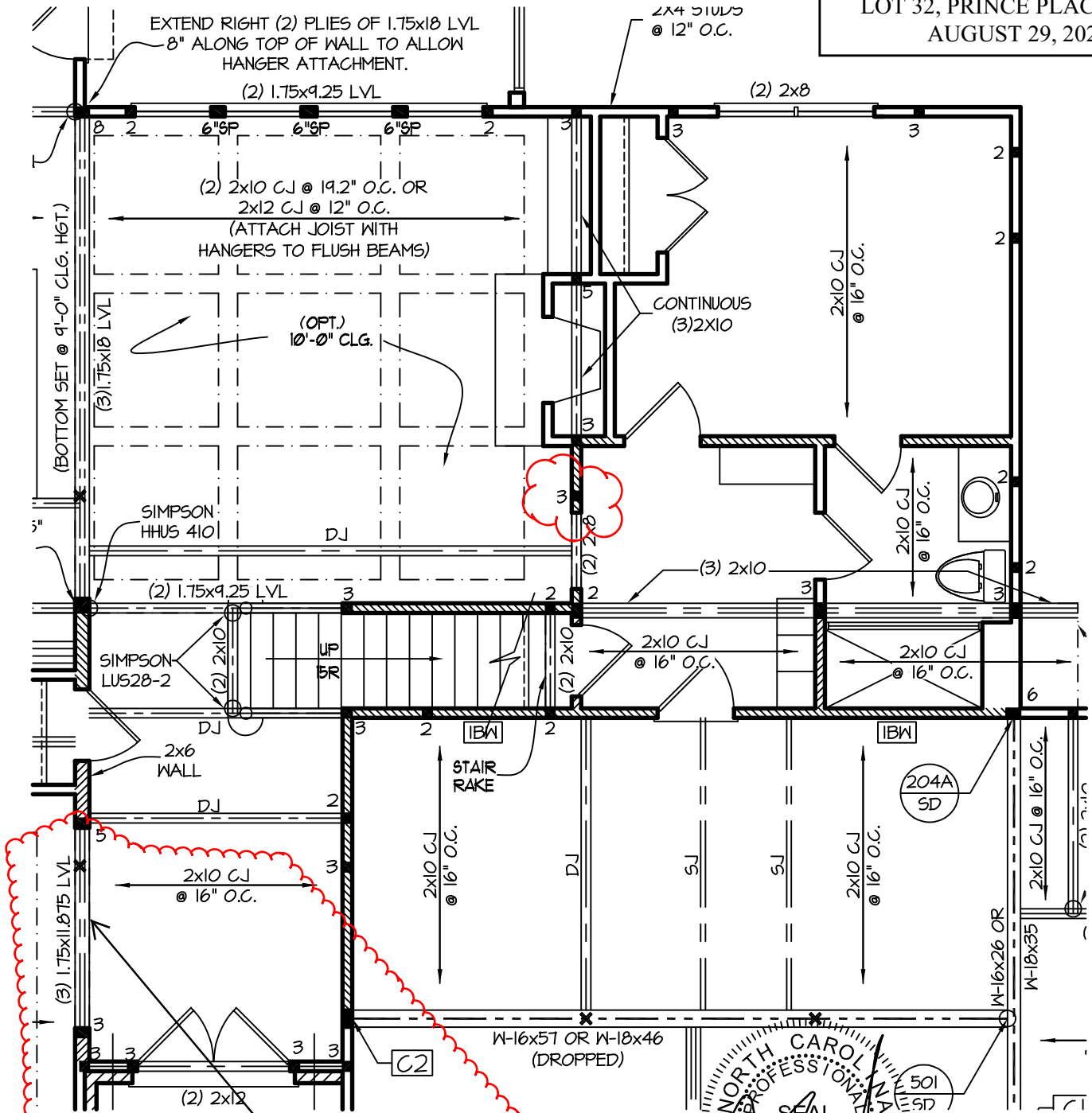
HALCYON HOMES
 PROJECT #: 22-1674(GR)-A
 PLAN: LOT 32, PRINCE PLACE
 RE: FRAMING ADDENDUM TO
 PROVIDE HALLWAY WITH
 ADEQUATE HEAD CLEARANCE
 IN ATTIC BEHIND STAIRS AND
 OTHER SPECIFIC ITEMS.

PAGE: 1 OF 3
 AUGUST 29, 2023



PARTIAL 2ND FLOOR CEILING STR. PLAN
 3/16" = 1'-0"





HEADER IS PARTIALLY DROPPED 5-1/2" BELOW SUBFLOOR. JOISTS ON EACH SIDE OF HEADER ARE NOTCHED 3-3/4" TO BEAR ON TOP OF LVL. 2X6 BLOCKING INSTALLED BETWEEN JOISTS ABOVE LVL AND JOISTS ARE ATTACHED W/ SIMPSON LUS28 HANGERS.

PARTIAL 1ST FLOOR CEILING STR. PLAN
3/16" = 1'-0"

