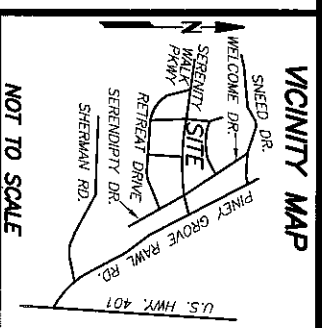
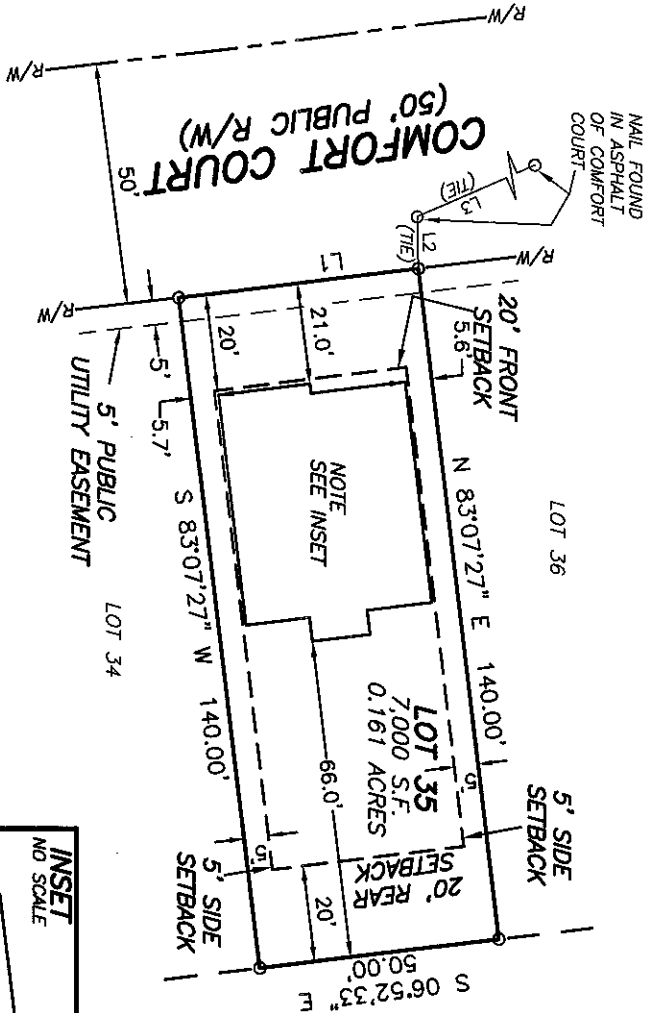
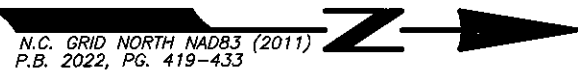


LINE TABLE		
LINE	BEARING	DISTANCE
L1	N 06°52'33" W	50.00'
L2	S 88°55'25" W	10.74'
L3	N 23°34'04" W	110.25'

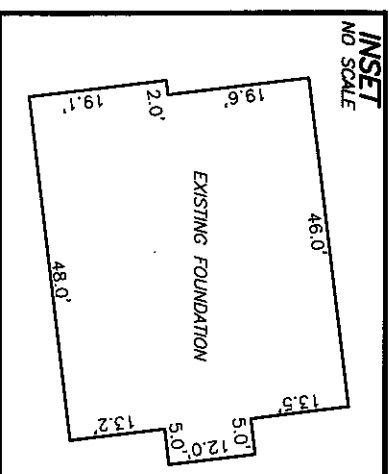


NOT TO SCALE

- REFERENCES:
- D.B. 4165, PG. 506
PIN 0655-23-1734.000
PID 08065501 0032 05
 - D.B. 4109, PG. 612



SETBACKS
 24.3' LOT WIDTHS
 FRONT YARD-20'
 SIDE YARD-5'
 REAR YARD-20'
 CORNER SIDE-12'

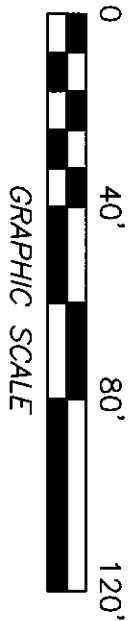


- NOTES:
- ALL EASEMENTS, RIGHTS OF WAY AND BOUNDARY INFORMATION TAKEN FROM P.B. 2022, PG 419-433 UNLESS OTHERWISE NOTED.
 - PROPERTY IS SUBJECT TO ALL EASEMENTS AND RESTRICTIONS OF RECORD. NO TITLE EXAMINATION HAS BEEN DONE BY ROBINSON & PLANTE, P.C.

NOTE: RATIO OF PRECISION IS 1:10,000±. MISCLASURE WAS DISTRIBUTED BY THE COMPASS METHOD. THE DISTANCES ON THIS MAP ARE ADJUSTED HORIZONTAL GROUND UNLESS NOTED OTHERWISE. ALL AREAS ARE CALCULATED BY COORDINATE COMPUTATION.

LOT 35 SERENITY SUBDIVISION
 PHASE 1
 26 COMFORT COURT
 HARNETT COUNTY
 FUQUAY-VARINA, N.C. 27526

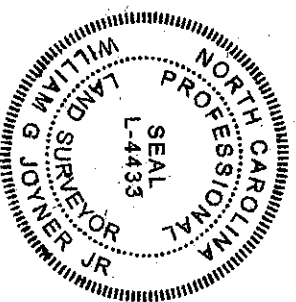
REFERENCE: PLAT BOOK 2022 PAGE 419-433.



FILE: STY10135FD

I CERTIFY THAT THIS MAP WAS DRAWN UNDER MY SUPERVISION FROM AN ACTUAL SURVEY MADE UNDER MY SUPERVISION. DESCRIPTION RECORDED IN REFERENCES AS SHOWN THAT THE BOUNDARIES NOT SURVEYED ARE INDICATED AS DRAWN FROM INFORMATION IN PRECISION IS 1:10,000; AND THAT THIS MAP MEET THE REQUIREMENTS OF THE STANDARDS OF PRACTICE FOR LAND SURVEYING IN NORTH CAROLINA (21 NCAC 56.16000). THIS 2nd DAY OF AUGUST, 2023.

William G. Joyner Jr.
 PROFESSIONAL LAND SURVEYOR L-4433



ROBINSON & PLANTE PC
 LAND SURVEYING
 C-2687
 970 TRINITY ROAD
 RALEIGH, N.C. 27607
 PHONE (919) 859-6030
 FAX (919) 859-6032

DATE: 8-1-23

SCALE: 1"=40'