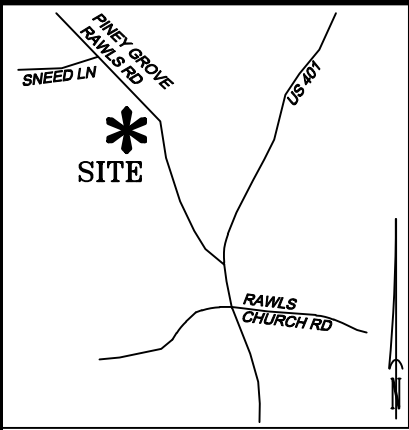
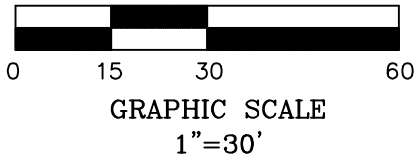


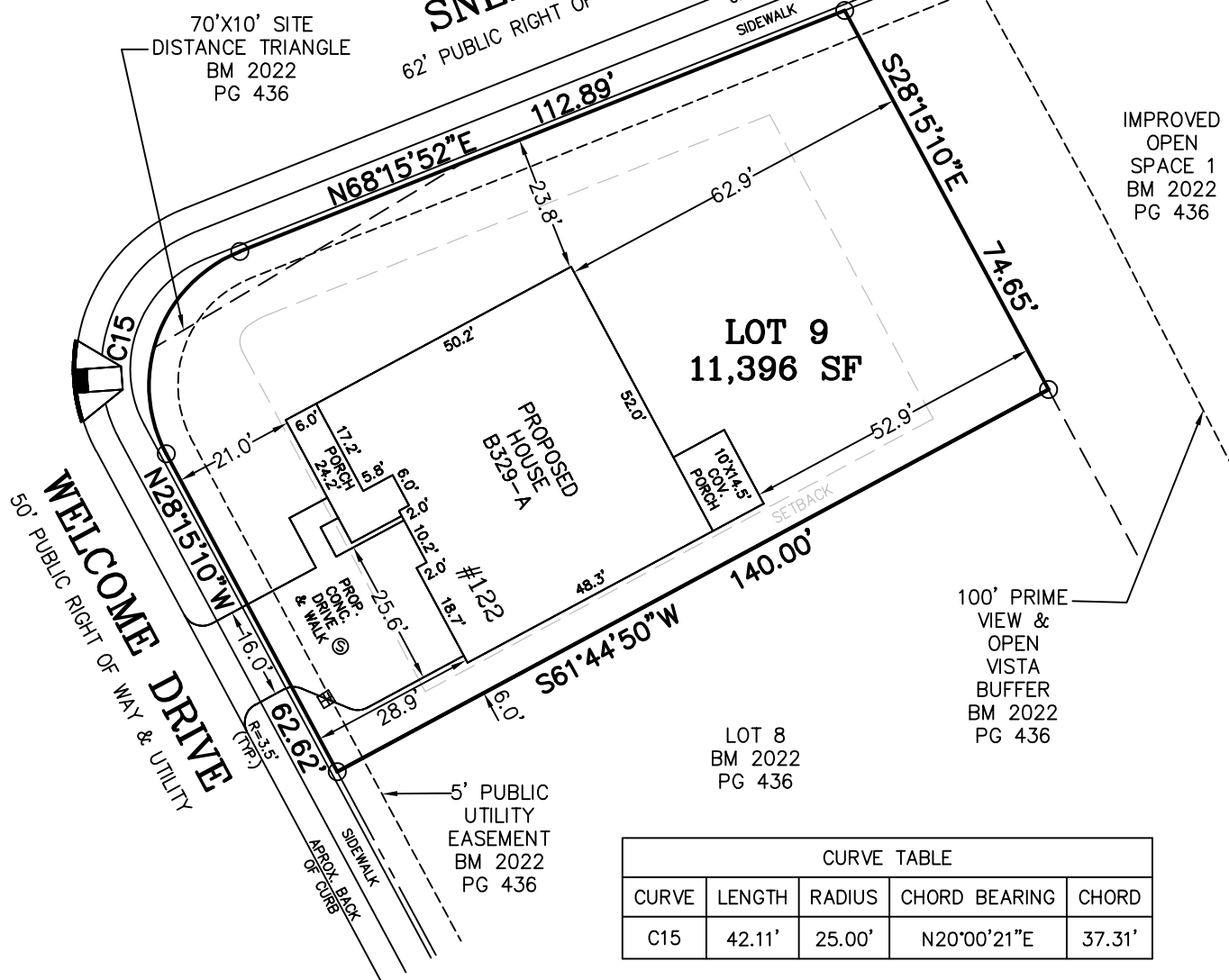
LEGEND

- MATHEMATICAL POINT
- CONTROL CORNER
- ▣ WATER METER
- ⊙ SEWER CLEAN OUT
- ⊗ FIRE HYDRANT



VICINITY MAP (NTS)

SNEED LANE



CURVE TABLE				
CURVE	LENGTH	RADIUS	CHORD BEARING	CHORD
C15	42.11'	25.00'	N20°00'21"E	37.31'

NOTES:

- REFERENCE HARNETT CO. BM 2022, PG 434-448 FOR BOUNDARY INFORMATION, NORTH INDEX & TIE LINES TO SUBDIVISION CONTROL CORNERS.
- ZONED: RA-30, RA-40, & CONSERVATION.
- SETBACKS:
43' LOT WIDTH:
FRONT YARD-20', SIDE YARD-4' & 4' OR 0' & 8', REAR YARD-20', CORNER YARD-12'.
>43' LOT WIDTH:
FRONT YARD-20', SIDE YARD-5', REAR YARD-20', CORNER YARD-12'.
- PROPERTY IS NOT LOCATED WITHIN A SPECIAL FLOOD HAZARD AREA AS SCALED FROM THE NFIP FIRM No. 3720065500L (EFFECTIVE DATE: JULY 19, 2022).

MAXIMUM ALLOWABLE IMPERVIOUS-4,000 SF

TOTAL ESTIMATED IMPERVIOUS-3,605 SF	
SITE	SQ. FT.
HOUSE	2,684
DRIVEWAY	714
LEAD WALK	53
COV. PORCH	145
A/C PAD	9

PERMIT PLAN LOT: 9

SERENITY SUBDIVISION, PHASE 1
HECTORS CREEK TOWNSHIP, HARNETT COUNTY, NC

SURVEYED FOR
DAVID WEEKLEY HOMES
1901 N. HARRISON AVENUE, SUITE 200
CARY, NC 27513

I HEREBY CERTIFY THAT THE BUILDING WILL LIE WHOLLY ON THE LOT. THIS PLAT IS OF AN EXISTING PARCEL OF LAND. THIS IS NOT A SURVEY AND NOT FOR RECORDATION PURPOSES.



MSS LAND CONSULTANTS, PC
"Committed to Total Quality Service"
Firm License: C-2070
EST. 1998

6118 St. Giles St Phone (919) 510-4464
(Suite E) Fax (919) 510-9102
Raleigh, NC 27612 Email: gowersw@mssland.com

PRELIMINARY PLAN

WADE A. GOWERS, PLS L-4639

O:_DWHOMES\IDWH-22-02.dwg 9.dwg - Layout1, 3/8/2023 12:21:46 PM, crawfordc, 1:1