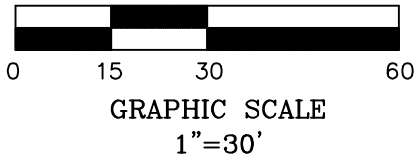
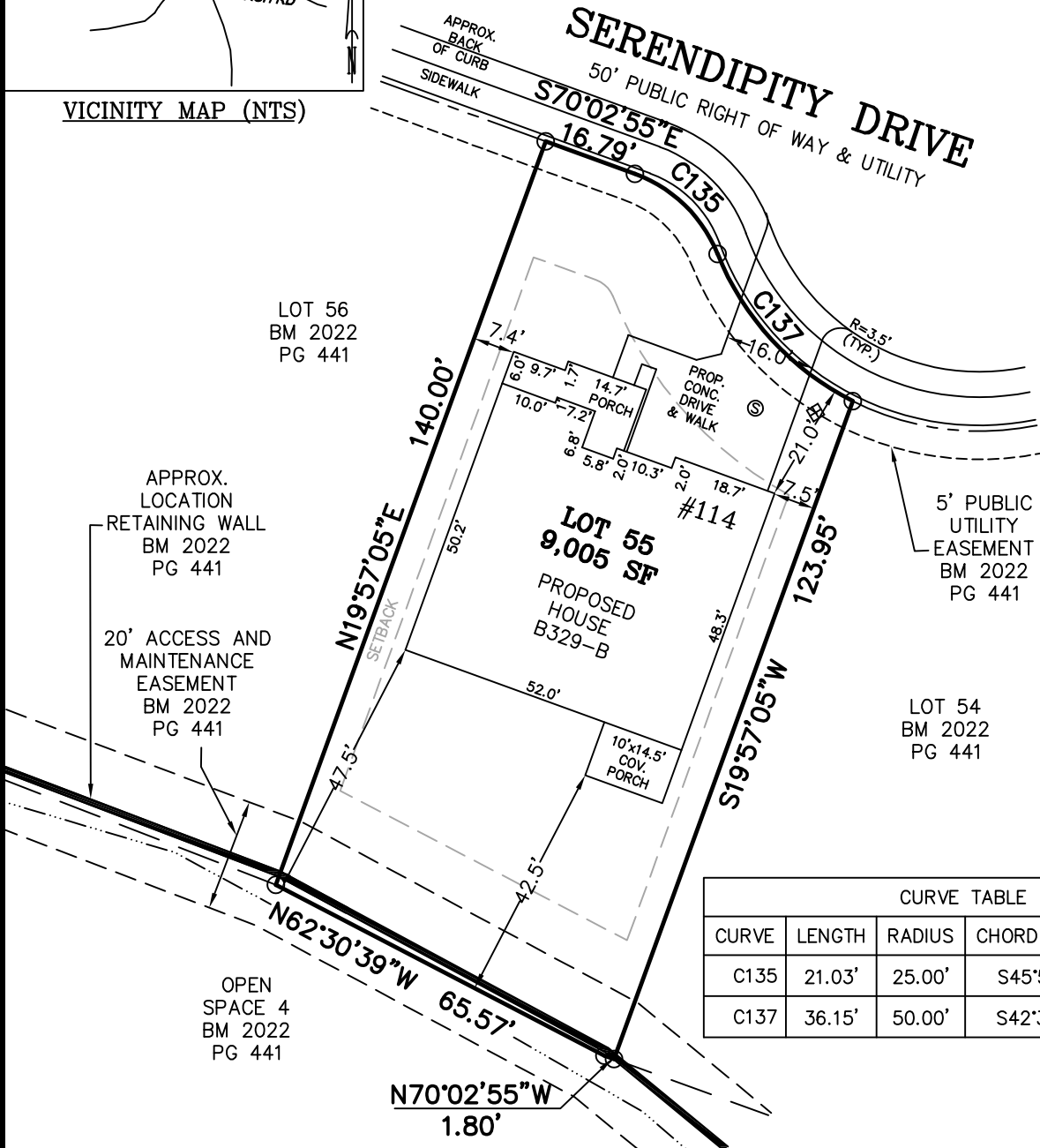


VICINITY MAP (NTS)



LEGEND

- MATHEMATICAL POINT
- CONTROL CORNER
- ▣ WATER METER
- ⊙ SEWER CLEAN OUT
- ⊗ FIRE HYDRANT



CURVE TABLE				
CURVE	LENGTH	RADIUS	CHORD BEARING	CHORD
C135	21.03'	25.00'	S45°57'14"E	20.41'
C137	36.15'	50.00'	S42°34'20"E	35.37'

NOTES:
 -REFERENCE HARNETT CO. BM 2022, PG 434-448 FOR BOUNDARY INFORMATION, NORTH INDEX & TIE LINES TO SUBDIVISION CONTROL CORNERS.
 -ZONED: RA-30, RA-40, & CONSERVATION.
 -SETBACKS:
 43' LOT WIDTH:
 FRONT YARD-20', SIDE YARD-4' & 4' OR 0' & 8', REAR YARD-20', CORNER YARD-12'.
 >43' LOT WIDTH:
 FRONT YARD-20', SIDE YARD-5', REAR YARD-20', CORNER YARD-12'.
 -PROPERTY IS NOT LOCATED WITHIN A SPECIAL FLOOD HAZARD AREA AS SCALED FROM THE NFIP FIRM No. 3720065500L (EFFECTIVE DATE: JULY 19, 2022).

MAXIMUM ALLOWABLE IMPERVIOUS-3,600 SF

TOTAL ESTIMATED IMPERVIOUS-3,509 SF	
	SQ. FT.
SITE	2,711
HOUSE	2,711
DRIVEWAY	601
LEAD WALK	43
COV. PORCH	145
A/C PAD	9

PERMIT PLAN LOT: 55

SERENITY SUBDIVISION, PHASE 1
 HECTORS CREEK TOWNSHIP, HARNETT COUNTY, NC

SURVEYED FOR
DAVID WEEKLEY HOMES
 1901 N. HARRISON AVENUE, SUITE 200
 CARY, NC 27513

MSS LAND CONSULTANTS, PC
 "Committed to Total Quality Service"
 Firm License: C-2070
 EST. 1998

6118 St. Giles St
 (Suite E)
 Raleigh, NC 27612

Phone (919) 510-4464
 Fax (919) 510-9102
 Email: gowersw@mssland.com

I HEREBY CERTIFY THAT THE BUILDING WILL LIE WHOLLY ON THE LOT. THIS PLAT IS OF AN EXISTING PARCEL OF LAND. THIS IS NOT A SURVEY AND NOT FOR RECORDATION PURPOSES.

PRELIMINARY PLAN

WADE A. GOWERS, PLS L-4639

O:_DWHOMES\IDWH-22-02.dwg 55.dwg, Layout1, 3/8/2023 12:22:57 PM, crawfordc, 1:1